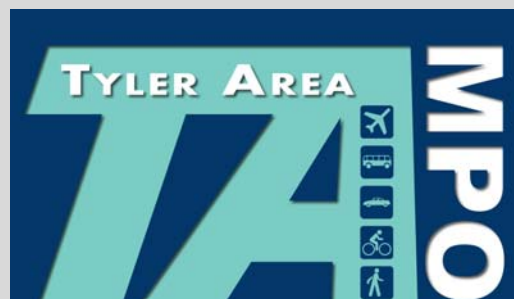




2011-2014 Transportation Improvement Program TIP



*Prepared by the:
Tyler Area Metropolitan Planning Organization*

*In Cooperation with:
Texas Department of Transportation, Federal Highway
Administration, and the Federal Transit Administration*

Revised/Amended: February 3, 2011
September 30, 2011
May 29, 2012

**Adopted by the
Tyler Area MPO Policy Committee**

June 24, 2010

TABLE OF CONTENTS

INTRODUCTION	1
PURPOSE	2
DEFINITION OF AREA	2
PUBLIC PARTICIPATION PROCESS	3
PROJECT SELECTION PROCESS	3
ENVIRONMENTAL JUSTICE	4
PROGRESS FROM PREVIOUS YEARS	9
AIR QUALITY ISSUES	10
AMERICANS WITH DISABILITIES ACT	16
GLOSSARY	16
 HIGHWAY PROJECT LISTING – MOBILITY	 18
FY 2011 MOBILITY PROJECT LISTING	19
FY 2012 - 2014 MOBILITY PROJECT LISTING	20
FY 2013 MOBILITY PROJECT LISTING	21
FY 2011 - 2014 MOBILITY PROJECT MAP	22
 TRANSIT PROJECT LISTING	 23
FY 2011 PROJECT LISTING	24-25
FY 2012 PROJECT LISTING	26-27
FY 2013 PROJECT LISTING	28-29
FY 2014 PROJECT LISTING	30-31
 FINANCIAL SUMMARY	 32-34
 ANNUAL SELF-CERTIFICATION	 35
 APPENDICES	 36
APPENDIX A: HIGHWAY PROJECT LISTING – NON-MOBILITY	37
LUMP-SUM FUNDED PROJECT LISTING DESCRIPTION	38
GROUPED PROJECT CSJ TABLE 1	38-39
FY 2011 NON-MOBILITY PROJECT LISTING	40-46
FY 2012 NON-MOBILITY PROJECT LISTING	47-50
FY 2013 NON-MOBILITY PROJECT LISTING	51-53
FY 2014 NON-MOBILITY PROJECT LISTING	54-55
 APPENDIX B: METROPOLITAN AREA BOUNDARY MAP	 56
 APPENDIX C: PROJECT UNDERGOING ENVIRONMENTAL	 57-60
ASSESSMENT	

INTRODUCTION

In accordance with the Transportation Equity Act for the 21st Century and the Safe, Accountable, Flexible, and Efficient Transportation Equity Act: A Legacy for Users, the Tyler Area Metropolitan Planning Organization (TAMPO), in cooperation with the State of Texas and affected transit operators, has developed this Transportation Improvement Program for the Tyler Area Metropolitan Area. The purpose of this document is to provide the public, Federal Highway Administration (23 Code of Federal Regulations Part 450) and Federal Transit Administration (49 Code of Federal Regulations Part 613), and other interested parties with a priority list of projects and project segments to be carried out within a four year period after the adoption of the Transportation Improvement Program. A financial plan is part of this document. This financial plan demonstrates how the Transportation Improvement Program can be implemented, and indicates resources from public and private sources that are reasonably expected to be made available to carry out the program. This document covers the four year fiscal period of 2011-2014.

The projects included in this Transportation Improvement Program originated from the Metropolitan Transportation Plan 2035, or long-range plan. The TAMPO Policy Committee adopted the Metropolitan Transportation Plan on December 4, 2009. The Metropolitan Transportation Plan is updated every five years and now covers the planning period through the year 2035. The Transportation Improvement Program is a four-year planning document, updated every two years; this Transportation Improvement Program will cover the four-year period from October 2011 through September 2014.

In compliance with 23 Code of Federal Regulations Part 450, the Transportation Improvement Program shall include all of the following:

1. Capital and non-capital surface transportation projects (or phases of projects) within the boundaries of the metropolitan planning area proposed for funding under 23 United States Code and 49 United States Code Chapter 53 (including transportation enhancements; Federal Land Highway program projects; safety projects included in the State's Strategic Highway Safety Plan; trails projects; pedestrian walkways; and bicycle facilities);
2. All regionally significant projects requiring action by the Federal Highway Administration or the Federal Transit Administration whether or not the projects are to be funded under title 23 United States Code Chapters 1 and 2 or title 49 United States Code Chapter 53 (e.g., addition of an interchange to the Interstate System with state, local, or private funds and congressionally designated projects not funded under 23 United States Code or 49 United States Code Chapter 53). For public information and conformity purposes, the Transportation Improvement Program shall include all regionally significant projects

proposed to be funded with federal funds other than those administered by the Federal Highway Administration or the Federal Transit Administration, as well as all regionally significant projects to be funded with nonfederal funds.;

3. Project or project phasing included in the Transportation Improvement Program shall be consistent with the approved Metropolitan Transportation Plan;
4. A financial plan that demonstrates how the approved Transportation Improvement Program can be implemented, indicates resources from public and private sources that are reasonably expected to be made available to carry out the Transportation Improvement Program, and recommends any additional financing strategies for needed projects and programs.

PURPOSE

The purpose of the Transportation Improvement Program is to list the transportation improvements that are scheduled to be implemented within the next four fiscal years. This plan provides the guide to Federal Highway Administration, Federal Transit Administration, Texas Department of Transportation, and local officials for budgeting funds and planning design and construction of transportation and transit improvements for the near future.

A project must be included in Metropolitan Transportation Plan (long-range plan) and then the Transportation Improvement Program (short-range plan) in order to be eligible for any federal funding. The Transportation Improvement Program may be amended as funding levels change or transportation needs change. Amendments to the Transportation Improvement Program updating or adjusting amounts of listed projects, let dates, project numbers, and similar amendments will not require approval by the TAMPO Policy Committee following concurrence by Texas Department of Transportation.

DEFINITION OF AREA

The Tyler Metropolitan Planning Area includes the entire urbanized area of Tyler as defined by the 2000 census. It includes the immediate and contiguous urban area surrounding the City of Tyler most likely to be impacted by urban development during the next 25 years. The total area encompassed by the boundary is approximately 342 square miles and includes the cities of Tyler, Whitehouse, Lindale, New Chapel Hill, Noonday, and Hideaway. Please see Appendix B for the Metropolitan Area Boundary Map as approved by the TAMPO Policy Committee in 2004.

PUBLIC PARTICIPATION PROCESS

The 2011 – 2014 Transportation Improvement Program was developed in accordance with the Public Participation Plan of TAMPO. The Public Participation Plan requires one public meeting to be held to present the Transportation Improvement Program and provides for a 10-day comment period prior to the adoption of the program. A legal notice was published in the Tyler Morning Telegraph newspaper at least 72 hours prior to the beginning of the 10 day comment period; notices were posted at least 72 hours before the comment period. Additional opportunities for public involvement will be provided when and if this document is revised.

Prior to the public meeting, notices and agendas were distributed to the Tyler-area news media and were posted at the Tyler Development Center, Smith County Courthouse, and Tyler City Hall. A copy of the draft Transportation Improvement Program was made available at the City of Tyler City Clerk and Planning Department Offices, Tyler Public Library, Tyler Transit, and the Texas Department of Transportation Tyler District Office.

TAMPO also uses a website which can be accessed at www.tylerareampo.org. The draft Transportation Improvement Program, final version, past Transportation Improvement Programs, and other TAMPO documents also may be accessed on that website.

PROJECT SELECTION PROCESS

Federally funded capacity expansion and new location projects included in the Transportation Improvement Program are selected from the adopted Metropolitan Transportation Plan. Those projects included in the Metropolitan Transportation Plan are approved by the TAMPO Policy Committee through a criteria based grading methodology developed for the 2035 update. Projects advance to the Unified Transportation Program, as decided by the Texas Transportation Commission, and then to the Transportation Improvement Program based on available funding and Texas Department of Transportation resources. TAMPO is opting to utilize the statewide programming numbers (Statewide Control Section Job Numbers) for non-mobility federally funded projects. Note: The FY11 – FY14 Statewide Transportation Improvement Program will show a lump sum amount for projects listed with the statewide control section job number in non-mobility projects. See the non mobility project listing.

ENVIRONMENTAL JUSTICE

The intent of Environmental Justice is to avoid, minimize, or mitigate disproportionately high and adverse effects on minority and low-income populations; and ensure the full and fair participation by all potentially affected communities in the transportation decision-making process. The federal government has identified environmental justice as an important goal in transportation, and local and regional governments must incorporate environmental justice into transportation planning.

The legal foundation for environmental justice considerations is Title VI of the Civil Rights Act of 1964, which prohibits discrimination in any program receiving federal assistance. The Civil Rights Restoration Act of 1987 broadened the scope of Title VI, clarified the intent, and expanded the definition of the terms "programs and activities" to include all programs and activities of federal aid recipients, sub-recipients and contractors, whether such programs are federally assisted or not.

In 1994, an Executive Order (Number 12898) directed every federal agency including the United States Department of Transportation to identify and address the effects of all programs, policies, and activities on "minority populations and/or low-income populations". This order was consistent with Title VI in considering fundamental environmental justice principles affecting low income and minority populations. The three fundamental environmental justice principles are to:

- Avoid, minimize or mitigate disproportionately high and adverse human health and environmental effects, including social and economic effects on minority populations and low-income populations.
- Ensure the full and fair participation by all potentially affected communities.
- Prevent the denial of, reduction in, or significant delay in the receipt of benefits by minority and low-income populations.

In 1997, the United State Department of Transportation issued an order that summarized and expanded on environmental justice requirements. The United State Department of Transportation order applies to all transportation planning policies decisions, and activities undertaken, funded, or approved by Federal Highway Administration, Federal Transit Administration, and Metropolitan Planning Organizations among other United State Department of Transportation components. The Federal Highway Administration and the Federal Transit Administration have jointly issued policy guidance on how environmental justice concerns can be incorporated into metropolitan transportation planning.

Environmental Justice and Transportation Planning in Tyler

As the agency responsible for coordinating the regional transportation planning process, TAMPO shall make sure that all segments of the population have been involved with the planning process. TAMPO objectives that relate to the public transportation system, the protection of the natural environment and social systems, and the public involvement process support environmental justice. This support should be evident throughout the transportation planning process, including those processes for the Metropolitan Transportation Plan, Transportation Improvement Program, and specific project planning.

The 2035 Metropolitan Transportation Plan update undertook the following process to incorporate the three environmental justice principles:

- Identify minority and low-income populations.
- Ensure public outreach effort reaches out to minority and other underrepresented groups.
- Overlay environmental justice maps with the recommended long range transportation improvements to assess broadly potential adverse impacts or disproportionate allocation of long range transportation investments towards minority and/ or low-income populations.

Environmental Justice Populations

For environmental justice analysis, the whole of Smith County is included. The geographic unit of analysis used is the Census Block Group as defined by the United States Census Bureau.

Minority Census Block Groups

An environmental justice area is defined as a census block group that has high concentration of minority and/or low-income populations when compared to the overall planning area. The minority population of individual census block groups in Smith County ranges from 0.9% to 97.5%. Minority environmental justice census block groups are determined by the minority (non-white) percentage of the population in a census block group. Any census block group with a minority population percentage equal to or greater than 50% is considered a minority environmental justice area. Of the planning area's 125 census block groups, 28 have a minority population equal to or greater than 50%. These census block groups are selected for environmental justice analysis, and are shown in Figure 1. As observed on the map, census block groups having high minority population are in Tyler and are generally inside Loop 323. One census block group located east of Loop 323 along TX 31 and partly within the metropolitan planning area has nearly 60% minority.

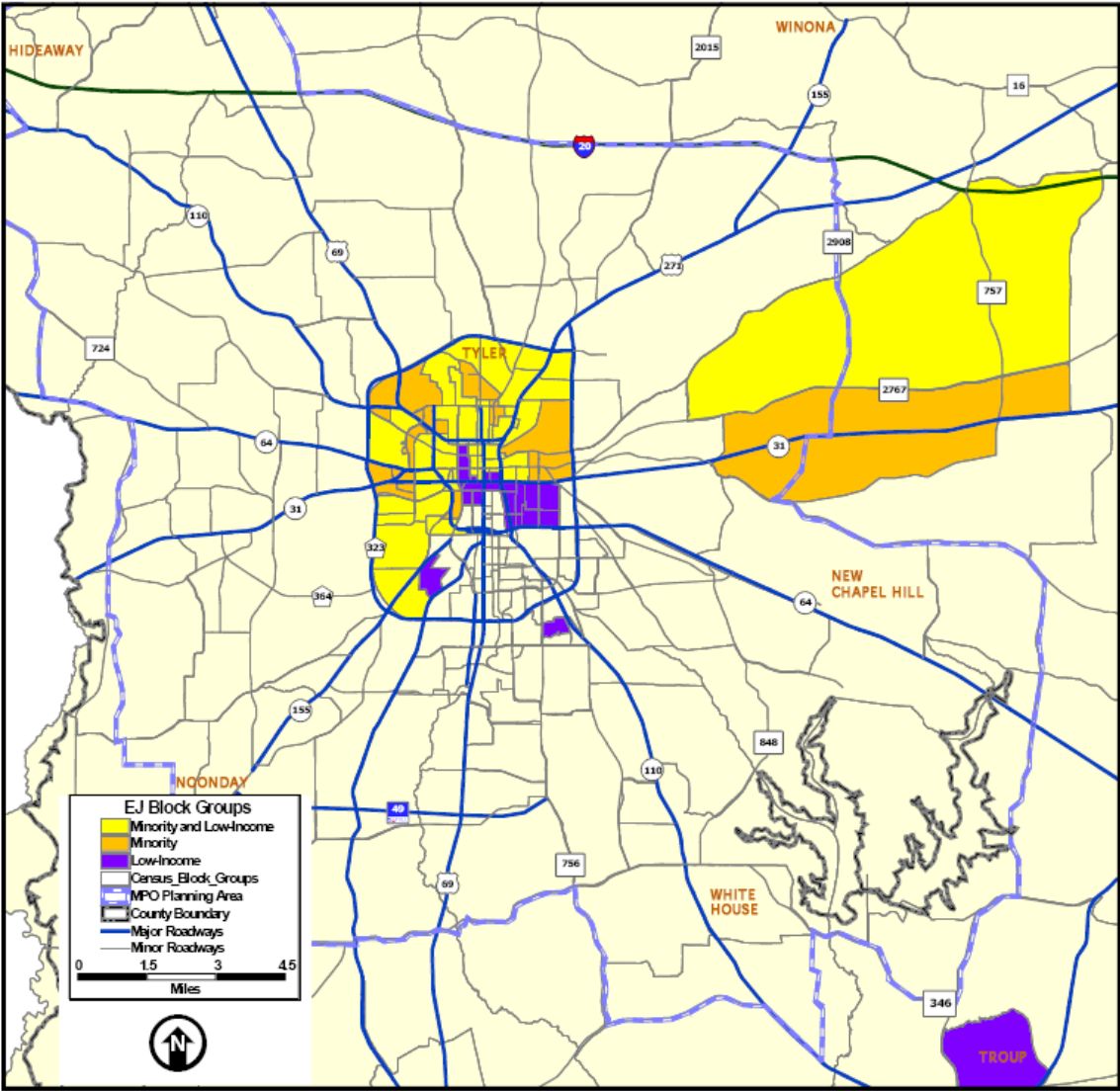
Low-Income Census Block Groups

The Department of Housing and Urban Development's definition of low-income in Title 24 Code of Federal Regulations 5.603(b) is adopted to determine which census blocks in the county have high concentrations of low-income households. The Department of Housing and Urban Development defines low-income as "a family whose annual income does not exceed 80 percent of the median income for the area." The distribution of median household incomes (in 1999 dollars) across all census block groups in Smith County is about \$34,700. The criteria for determining a low-income census block group is determined as those census block group with household median income of 80% of \$34,700 or \$27,760 and below. Of the planning area's 124 census block groups, 26 census block groups have median incomes less than \$27,760 and therefore qualify as low-income environmental justice areas. The census block groups selected for environmental justice analysis are shown in Figure 1. As observed on the map, census block groups having high low-income population also are generally located in Tyler inside Loop 323.

Environmental Justice Analysis

Looking at Figure 1, one can observe that the minority and low-income census block groups are closely related. That is, they are concentrated in Tyler largely inside Loop 323. The Tyler planning area follows the trend in the majority of United States cities in having a low-income and high minority city core with more affluent and mostly white suburbs. TAMPO is committed to avoiding disproportionately adverse impacts on minority and low-income populations, as well as disproportionate adverse impacts on the elderly, persons with disabilities, and those without private automobiles for inclusion in public involvement efforts and for transportation needs assessments. TAMPO uses several techniques to ensure underserved populations are involved in the transportation planning process. Techniques include staff presentations to community groups, providing public notices, and advertising in newspapers that serve minority populations.

ENVIRONMENTAL JUSTICE AREAS
FIGURE 1



PROGRESS FROM PREVIOUS YEARS

Progress for TAMPO is shown through publishing a list of projects annually that were let in the previous fiscal year. The previous transportation improvement program included the fiscal years of 2008 through 2011. The Highway and Transit Projects that were let in FY 2008 are detailed in Table 1 in the Fiscal Year 2008 Annual Project Listing. The Highway and Transit Projects that were let in FY 2009 are detailed in Table 2 in the Fiscal Year 2009 Annual Project Listings. All projects let in the 2010 Fiscal Year will be published as the 2010 Annual Project Listing in December 2010.

PROJECT IMPLEMENTATION/PROGRESS FROM PREVIOUS YEARS

CSJ NUMBER	PROJECT ID	PROJECT LOCATION	FROM	TO	PROJECT TYPE	ORIGINAL LET DATE	REVISED LET DATE	LET	COMPLETED	DELAYED
3487-02-007	SM-29	Loop 49, Segment 5	FM 756	SH 110	Construct 2 lanes controlled access toll road on new location: ultimate 4 lane facility	2009	01/2010	<input checked="" type="checkbox"/>	<input type="checkbox"/>	<input type="checkbox"/>
0191-01-063	SM-27	US 69	At FM 346		Construct grade separated interchange	2009	12/2013	<input type="checkbox"/>	<input type="checkbox"/>	<input checked="" type="checkbox"/>
3487-02-010	SM-29	Loop 49, Segment 5	FM 756	SH 110	Install electronic toll gantries and equipment for new 2-lane toll road	2010	01/2010	<input checked="" type="checkbox"/>	<input type="checkbox"/>	<input type="checkbox"/>
3487-01-004	SM-30	Loop 49, Segment 3A	SH 31	SH 155	Construct 2 lanes controlled access toll road on new location: ultimate 4 lane facility	2009	06/2009	<input checked="" type="checkbox"/>	<input type="checkbox"/>	<input type="checkbox"/>
3487-01-900	SM-30	Loop 49, Segment 3A	SH 31	SH 155	Install electronic toll gantries and equipment for new 2-lane toll road	2009	06/2009	<input checked="" type="checkbox"/>	<input type="checkbox"/>	<input type="checkbox"/>

AIR QUALITY ISSUES

The Clean Air Act requires the United States Environmental Protection Agency to set limits on how much of a particular pollutant can be in the air anywhere in the United States. National Ambient Air Quality Standards are the pollutant limits set by the Environmental Protection Agency; they define the allowable concentration of pollution in the air for six different pollutants:

- Carbon Monoxide;
- Lead;
- Nitrogen Dioxide;
- Particulate Matter;
- Ozone, and
- Sulfur Dioxide.

The Clean Air Act specifies how areas within the country are designated as either “attainment” or “non-attainment” of an air quality standard, and provides Environmental Protection Agency the authority to define the boundaries of non-attainment areas. For areas designated as non-attainment for one or more National Ambient Air Quality Standards, the Clean Air Act defines a specific timetable to attain the standard and requires that non-attainment areas demonstrate reasonable and steady progress in reducing air pollution emissions until such time that an area can demonstrate attainment. Each state must develop and submit a State Implementation Plan that addresses each pollutant for which it fails to meet the National Ambient Air Quality Standards. Individual state air quality agencies are responsible for defining the overall regional plan to reduce air pollution emissions to levels that will enable attainment and maintenance of the National Ambient Air Quality Standards. This strategy is articulated through the State Implementation Plan.

Early Action Compact

Ozone concentrations measured at the Gregg County Airport near Longview have exceeded both the 1-hour and 8-hour National Ambient Air Quality Standards for ozone. In 1996, the Tyler/Longview/Marshall area became a Flexible Attainment Region and a mechanism for developing strategies to attain the 1-hour ozone standard was implemented under a Memorandum of Agreement (Flexible Attainment Region Memorandum of Agreement, September 16, 1996). The Tyler/Longview/Marshall area receives funding from the Texas legislature to address ozone air quality issues. These resources have funded studies through the East Texas Council of Governments under the technical and policy direction of the North East Texas Air Care organization. In 1999, the consulting firm ENVIRON completed an ozone modeling study for two 1-hour ozone episodes that included future year modeling for 2007 and an evaluation of

local emission reduction strategies. In May 2002, a State Implementation Plan for Northeast Texas that demonstrated attainment of the 1-hour ozone standard by 2007¹ was submitted.

In 1997, the Environmental Protection Agency promulgated an 8-hour National Ambient Air Quality Standards for ozone that was more stringent than the previous 1-hour standard. The 8-hour ozone National Ambient Air Quality Standards was challenged in court and was eventually upheld in 2002 by the United States Supreme Court. Environmental Protection Agency designated all five North East Texas Air Care counties as 8-hour ozone attainment areas on April 15, 2004.

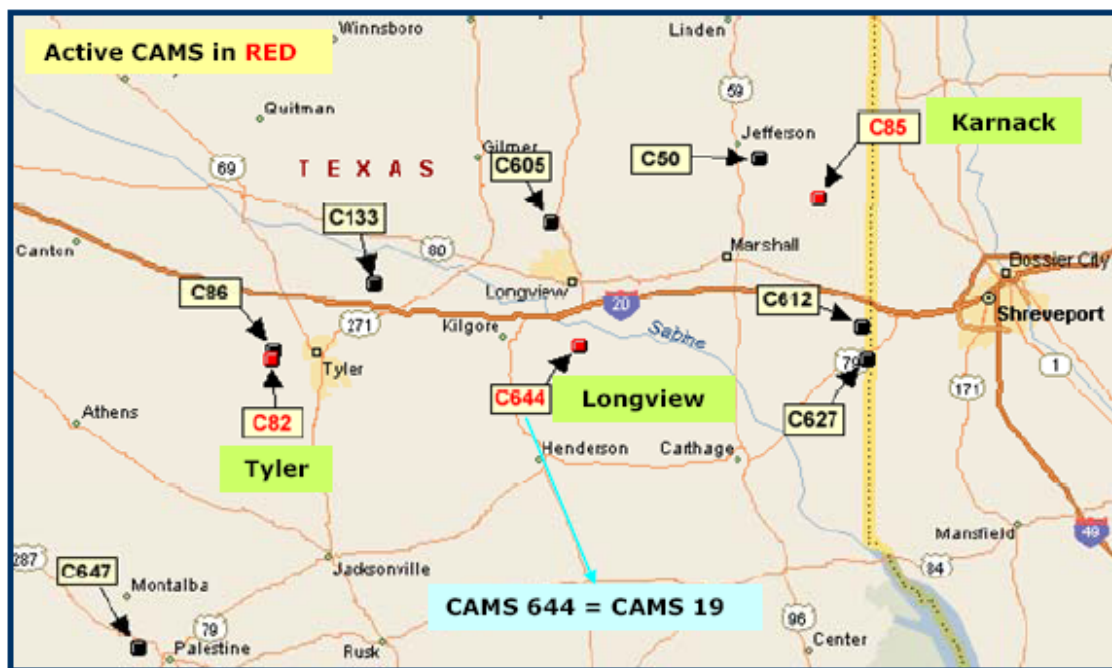
On December 20, 2002, local governments in a five county area of Northeast Texas (Gregg, Harrison, Rusk, Smith, and Upshur counties) entered into an Early Action Compact with the Environmental Protection Agency and Texas Commission on Environmental Quality. The purpose of the early action compact was to develop and implement a Clean Air Action Plan that would reduce ground level ozone concentrations throughout the five county area to comply with the 8-hour ozone standard by December 31, 2007 and maintain the standard beyond that date.

In exchange for early implementation action for the 8-hour ozone standard, Environmental Protection Agency deferred the effective dates of designation for those areas that would have been designated nonattainment for the 0.08 parts per million 8-hour ozone National Ambient Air Quality Standards. The deferral of the effective date had the effect of also deferring the application of specific Clean Air Act requirements in these early action compact areas, including the New Source Review and Conformity Programs. The early action compact program concluded in the spring of 2008. At that time, the Environmental Protection Agency designated as 'attainment' those early action compact areas that had attained the ozone National Ambient Air Quality Standards and affirmed a nonattainment designation for the one area that had not attained the National Ambient Air Quality Standards for ozone.

Ozone Status and Trends

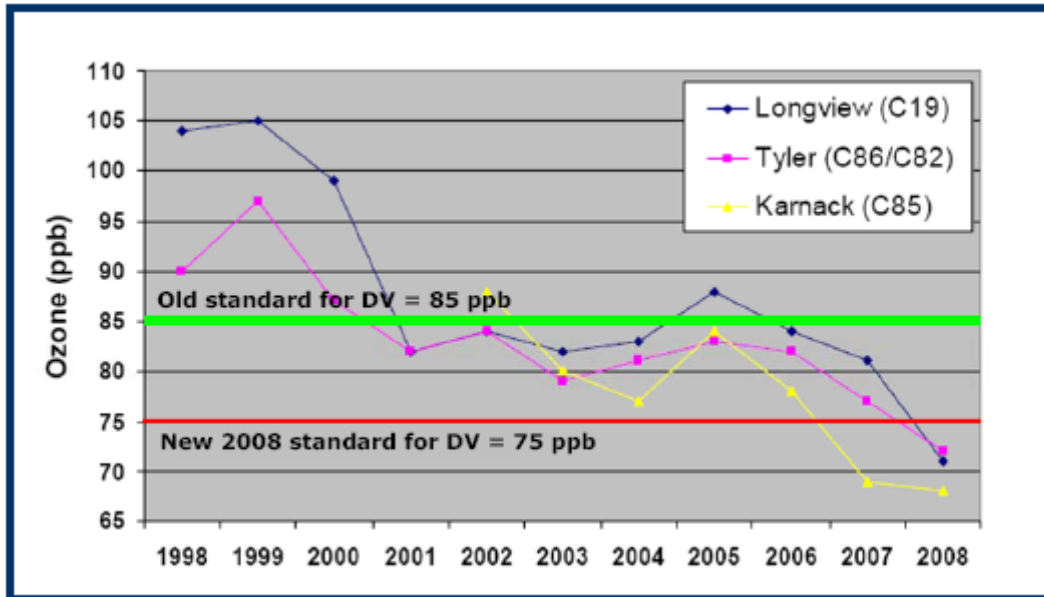
Figure 2 shows the locations of three active Continuous Air Monitoring Stations (CAMS-19, CAMS-82, and CAMS-85) in the Tyler/Longview/Marshall area of Northeast Texas. The Texas Commission on Environmental Quality operates these stations to monitor compliance with the National Ambient Air Quality Standards for ozone. Historically, the highest ozone concentrations have been recorded at the Longview monitor (CAMS-19) located at the Gregg County airport. Ozone monitoring commenced in 1995 at Tyler Airport (CAMS-86) although the monitor was relocated within the airport in 2000 due to construction and assigned a new number (CAMS-82).

CONTINUOUS AIR MONITORING STATIONS FIGURE 2



The annual 4th highest 8-hour ozone values at monitors in Northeast Texas for recent years are shown in graphical form in Figure 3. The ozone data for the last four years show that 2005 was a relatively high ozone year in Northeast Texas; the 2005 ozone values for the Longview monitor increased the three year averages used to calculate the 2004-2006 design values to the point where this monitor was out of compliance with the 8-hour standard at the end of 2006. On the other hand, the lowest 4th high ozone values in the last decade at the Northeast Texas monitors occurred in 2008. The 2005-2007 design values are all 84 ppb or less, which means that all Northeast Texas monitors, including Longview, were in compliance with the 8-hour ozone standard of 0.08 parts per million as of the end of the Early Action Compact on December 31, 2007.

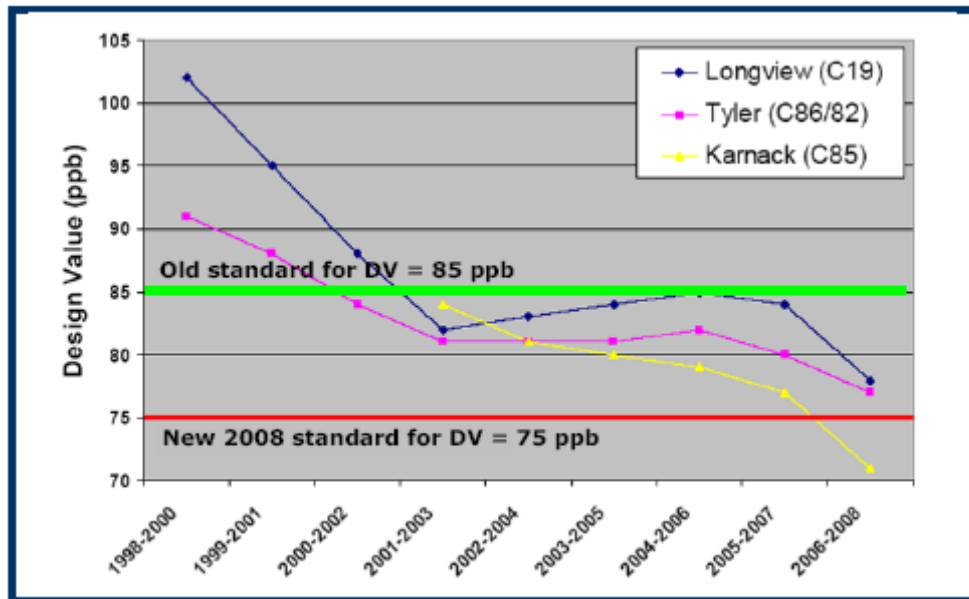
**ANNUAL 4TH HIGHEST 8-HOUR OZONE TRENDS
FIGURE 3**



Ozone Attainment Status and New Ozone Standard in 2008

The Environmental Protection Agency's National Ambient Air Quality Standard for ozone includes both a 1-hour average standard and an 8-hour average standard. The 1-hour standard limits the frequency with which the daily maximum 1-hour average concentration can exceed 0.12 parts per million to once per year (averaged over three years) while the 8-hour standard sets a maximum level (0.08 parts per million) for the three year running average of the annual fourth-highest daily maximum 8-hour average concentration. Environmental Protection Agency designated all five North East Texas Air Care counties as 8-hour ozone attainment areas on April 15, 2004.

**ANNUAL 8-HOUR OZONE DESIGN VALUE TRENDS
FIGURE 4**



In March 2008, the Environmental Protection Agency promulgated a new, more stringent 8-hour ozone standard of 75 parts per million. Based on the 2005-2007 data shown in Table 4, none of the three Northeast Texas monitors attains the 75 parts per million standard. The ENVIRON International Corporation report quoted a May 15, 2008 presentation to the North East Texas Air Care Technical and Policy Committee that the Environmental Protection Agency is likely to require states to recommend designations of attainment status based on 2006-2008 air quality data; states were required to make attainment designation recommendations by March 2009. Environmental Protection Agency expects State Implementation Plan to be due in March 2013, with attainment dates ranging from 2013-2020 depending on the severity of the ozone problem in a given nonattainment area.

Transportation Planning and Air Quality

The primary causes of ozone in the environment are nitrogen oxides and volatile organic compound emissions from industrial facilities and electric utilities, motor vehicle exhaust, gasoline vapors, pine trees, and chemical solvents. According to the U.S. Department of Energy, transportation-related carbon dioxide emissions (a volatile organic compound) account for one third of total carbon dioxide emissions worldwide. A 2006 Federal Highway Administration publication indicated that the U.S. contributes 45% of the total worldwide vehicle emissions. That is why the Clean Air Act Amendments of 1990 contained a focus on the reduction of vehicle emissions through transportation planning.

Emissions from automobiles and trucks are one source of ground level ozone and therefore future traffic volumes and congestion levels may impact attainment status in the Tyler region. In developing transportation programs and policies, efforts should be taken to ensure that these environmental impacts are considered and that transportation planning is compatible with federal and state air quality requirements.

There are several methods to control ozone including annual inspections of automobiles to measure tailpipe exhaust and the installation of special nozzles on gas pumps that collect vapors. Additionally, other methods include educating the public about carpooling or various rideshare programs and actively promoting the Tyler Transit system. Increasing ridership on the transit system will aid in the decrease of ozone and automobile emissions.

As part of Northeast Texas' Clean Air Action plan a number of enforceable and voluntary measures were identified to control emission levels in the region. Initiatives that are currently being undertaken to help control on road vehicle emissions include:

- The Department of Energy "Clean Cities Program" voluntary on-road vehicle emission reductions, the East Texas Clean Cities Coalition, coordinated by the East Texas Council of Governments, has successfully obtained a Clean Cities Designation for the region from Department of Energy. East Texas Clean Cities Coalition promotes the use of alternative fuels to gasoline and diesel, such as propane, natural gas, ethanol, and biodiesel. Funding for clean-fueled propane vans for local transit agencies with 23 propane-fueled vans placed in service by the end of 2005.
- Eighteen new lower emitting propane heavy duty (Class 2b) vans were purchased in 2003 and 2004 for the East Texas Council of Governments' Rural Transportation Program (10 vans), the City of Longview (7 vans), and Tyler Transit (1 van). The average miles per year driven by these vehicles is 36,820.
- Public awareness program: The East Texas Council of Governments runs an annual public education and ozone awareness program for the five county Tyler/Longview/Marshall area. The program includes the following elements: an ozone watch and warning communications network between local governments and industries to communicate ozone action day forecasts issued by the Texas Commission of Environmental Quality; a North East Texas Air Care website (<http://www.netac.org>); production and distribution of public service announcements; school programs and teacher training workshops; distribution of public information and educational materials; and an annual ozone season kick-off meeting for northeast Texas.

AMERICANS WITH DISABILITIES ACT

Paratransit is a shared ride public transportation service, allowing door to door assistance, to people with disabilities who are unable to use fixed-route buses. The paratransit system offers transportation to certified riders using modern, handicap accessible vehicles. Riders who are unable to access vehicles by using steps may use the wheelchair lift.

The Texas Department of Transportation, Tyler District, continues to build American with Disabilities Act compliant curb ramps as part of their annual letting program. Americans with Disabilities Act compliant design standards are used as part of the design process for all major mobility projects undertaken in the region.

TAMPO has chosen to show both mobility and non-mobility projects for the area. The non-mobility or lump-sum categorized projects are included after the Highway Projects: Mobility section.

GLOSSARY

SUPPLEMENTING THE FOLLOWING PROJECT LISTING AND
EXPLAINING TERMS AND ITEMS SHOWN

CATEGORY:

Federal Funding Category – Major categories of Federal funding as established by the Transportation Equity Act for the 21st Century. Categories are:

IC	Interstate Construction
IM	Interstate Maintenance
NHS	National Highway System
STP	Surface Transportation Program
CMAQ	Congestion Mitigation and Air Quality Funds
Bridge	On/Off System Bridge Rehabilitation
DSB	Donor State Bonus Funds
MA	Minimum Allocation Funds
FLHP	Federal Land Highway Program
FTA	Federal Transit Administration Funding
LET Date	Bid Let Date

STATEWIDE CONTROL SECTION JOB NUMBER:

Programming number utilized for statewide lump sum funded projects.

CSJ:

Control Section Job Number – Texas Department of Transportation assigned number for projects entered into the Unified Transportation Plan.

MAP KEY:

Identifies the project on the maps retained at the TAMPO office and GIS data files.

PROJECT ID:

Project identification code assigned by TAMPO. Used to relate projects to the Metropolitan Transportation Plan.

**HIGHWAY PROJECTS
MOBILITY**

STATEWIDE TRANSPORTATION IMPROVEMENT PROGRAM
TIP FY 2011-2014
TYLER METROPOLITAN PLANNING ORGANIZATION
FY 2011

DISTRICT	COUNTY	CSJ	HWY	PHASE	CITY	PROJECT SPONSOR	YOE COST
10 - TYLER	SMITH	3487-01-006	LP 49	C,E	TYLER	NET RMA	\$ 73,768,945
LIMITS FROM IH 20 AT FM 849, S						REVISION DATE: 07/2010	
LIMITS TO: SH 31, 2.0 MI EAST OF FM 2661						MPO PROJ NUM: SM-30	
PROJECT CONSTRUCT 2 LNS CONTROLLED ACCESS TOLL ROAD ON NEW LOCATION (ULTIMATE 4-LANE						FUNDING CAT(S): LC	
DESCR: FACILITY) (TOLL)							
REMARKS MO 83647 AUTH ROW REQUIREMENTS; RMA PROJECT W/APPR. MO						PROJECT HISTORY: CONSTRUCT 2 LNS CONTROLLED ACCESS TOLL ROAD ON NEW	
P7: 110964						LOCATION (ULTIMATE 4-LANE FACILITY), SEGMENT 3B POSS	
						FUNDING SOURCES: TOLL REVENUE BACKED BONDS, LOCAL	
						LEVERAGE	
TOTAL PROJECT COST INFORMATION				AUTHORIZED FUNDING BY CATEGORY/SHARE			
PRELIM ENG:	\$ 3,304,094	COST OF APPROVED PHASES:	FEDERAL		STATE	LOCAL	LC
ROW PURCHASE:	\$ 15,736,746						TOTAL
CONST COST:	\$ 67,430,480		LOCAL CONTR:		\$	\$	\$ 73,768,945
CONST ENG:	\$ 3,034,372		TOTAL:		\$	\$	\$ 73,768,945
CONTING:	\$ 4,720,134						
IND COSTS:	\$ 4,180,690						
BND FINANCING:	\$						
TOTAL PRJ COST:	\$ 98,406,514	\$ 73,768,945					

PHASE: C = CONSTRUCTION, E = ENGINEERING, R = ROW, T = TRANSFER

* FUNDING NOT FIXED

No projects identified in FY 2012 or FY 2014

Two projects are projected for 2013 that is being moved forward from outer years through the use of Proposition 12 funds. One project is also projected for 2013 that is being moved forward from outer years through the use of the 2012 Statewide \$2 Billion Allocation Program.

STATEWIDE TRANSPORTATION IMPROVEMENT PROGRAM
TIP FY 2012-2014
TYLER METROPOLITAN PLANNING ORGANIZATION
FY 2013

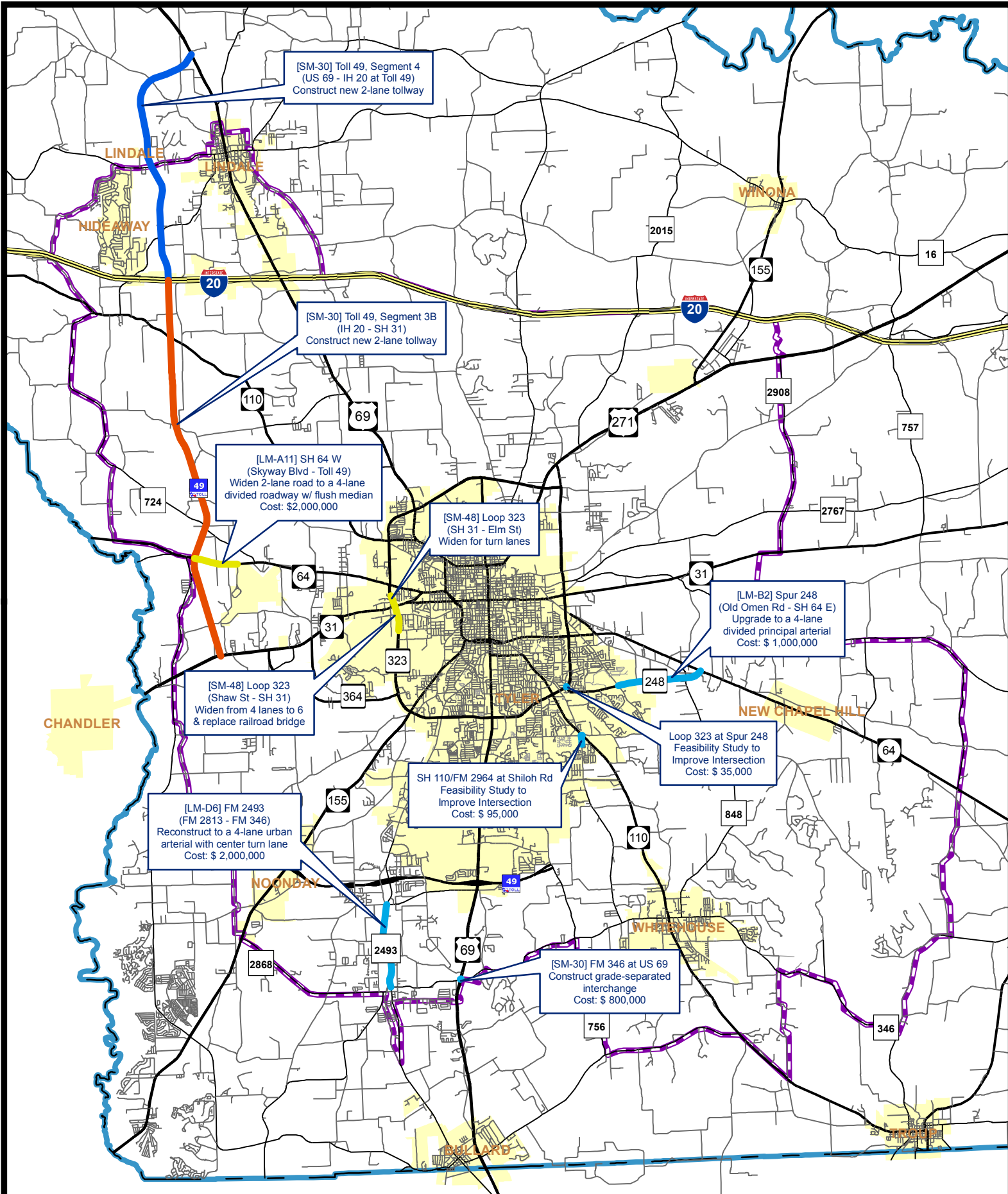
DISTRICT	COUNTY	CSJ	HWY	PHASE	CITY	PROJECT SPONSOR	YOY COST		
10 - TYLER	SMITH	0245-05-900	SH 64	C,E			\$ 3,787,467		
LIMITS FROM 0.4 MI E OF FM 2661(NEW SL 49), E						REVISION DATE: 06/2012			
LIMITS TO: 0.2 MI W OF FM 724 (AIRPORT ENTRNC)						MPO PROJ NUM:			
PROJECT WIDEN 2 LN ROAD TO 4 LANE DIVIDED ROADWAY W/FLUSH MEDIAN						FUNDING CAT(S): 2U,11			
DESCR:						PROJECT HISTORY: JUNE 2012 REVISION			
REMARKS						PROJECT HISTORY:			
P7:									
TOTAL PROJECT COST INFORMATION				AUTHORIZED FUNDING BY CATEGORY/SHARE					
PRELIM ENG:		\$ 168,925	COST OF APPROVED PHASES:	FEDERAL		STATE	LOCAL	LC	TOTAL
ROW PURCHASE:		\$		2U-URBAN CRDR:	\$ 1,629,974	\$ 407,493	\$	\$	\$ 2,037,467*
CONST COST:		\$ 3,447,539		11-DIST DISC:	\$ 1,400,000	\$ 350,000	\$	\$	\$ 1,750,000
CONST ENG:		\$ 170,998		TOTAL:	\$ 3,029,974	\$ 757,493	\$	\$	\$ 3,787,467
CONTING:		\$ 68,606							
IND COSTS:		\$ 243,052							
BND FINANCING:		\$							
TOTAL PRJ COST:		\$ 4,228,062							

DISTRICT	COUNTY	CSJ	HWY	PHASE	CITY	PROJECT SPONSOR	YOY COST	
10 - TYLER	SMITH	2075-01-055	LP 323	C,E,R	TYLER		\$ 670,140	
LIMITS FROM SH 31 (W) IN TYLER, N 0.295 MI						REVISION DATE: 07/2012		
LIMITS TO: ELM ST						MPO PROJ NUM: SM-48		
PROJECT WIDEN FOR TURN LANES						FUNDING CAT(S): 3-Prop 12		
DESCR:					PROJECT HISTORY:			
REMARKS THIS PROJECT ALSO LISTED IN THE 2011 - 2014 STIP P7:								
TOTAL PROJECT COST INFORMATION			AUTHORIZED FUNDING BY CATEGORY/SHARE					
PRELIM ENG:	\$ 29,400	COST OF APPROVED PHASES: \$ 670,140	FEDERAL		STATE	LOCAL	LC	TOTAL
ROW PURCHASE:	\$ 0		3-Prop 12:	\$ 0	\$ 670,140	\$ 0	\$ 0	\$ 670,140*
CONST COST:	\$ 600,000		TOTAL:	\$ 0	\$ 670,140	\$ 0	\$ 0	\$ 670,140
CONST ENG:	\$ 40,740							
CONTING:	\$ 12,600							
IND COSTS:	\$ 42,300							
BND FINANCING:	\$ 0							
TOTAL PRJ COST: \$ 765,480								

DISTRICT	COUNTY	CSJ	HWY	PHASE	CITY	PROJECT SPONSOR	YOY COST
10 - TYLER	SMITH	2075-02-045	LP 323	C,E,R	TYLER		\$ 6,628,650
LIMITS FROM 0.6 MI S OF SH 31 (SHAW ST), N						REVISION DATE: 07/2012	
LIMITS TO: SH 31 (W) IN TYLER						MPO PROJ NUM: SM-48	
PROJECT WIDEN FROM 4 LNS TO 6 LNS & REPLACE COTTON BELT R/R U/P						FUNDING CAT(S): 3-Prop 12	
DESCR:						PROJECT HISTORY:	
REMARKS THIS PROJECT ALSO LISTED IN THE 2011 - 2014 STIP						REPLACE EXISTING RAILROAD UNDERPASS WIDEN FROM 4 LANES TO 6 LANES PROP 12 FUNDED	
P7:							
TOTAL PROJECT COST INFORMATION			AUTHORIZED FUNDING BY CATEGORY/SHARE				
PRELIM ENG:	\$ 289,100	COST OF APPROVED PHASES:					
ROW PURCHASE:	\$		3-Prop 12:	\$	\$ 6,628,650	\$	\$ 6,628,650*
CONST COST:	\$ 5,900,000		TOTAL:	\$	\$ 6,628,650	\$	\$ 6,628,650
CONST ENG:	\$ 439,550						
CONTING:	\$						
IND COSTS:	\$ 415,950						
BND FINANCING:	\$						
TOTAL PRJ COST: \$ 7,185,610							

PHASE: C = CONSTRUCTION, E = ENGINEERING, R = ROW, T = TRANSFER

* FUNDING NOT FIXED



TYLER AREA MPO

MPO Boundary

County Boundary

City Limits

Construction Prelim. Eng.

2011
2013
2013
2014

**2011 - 2014
Transportation Improvement Program
Highway Projects**

22

TRANSIT PROJECTS

FY 2011 TRANSIT PROJECT DESCRIPTIONS
Tyler Area MPO TRANSPORTATION IMPROVEMENT PROGRAM

Tyler

YOE = Year of Expenditure

<u>General Project Information</u>		<u>Funding Information (YOE)</u>	
Project Sponsor	Tyler Transit	Federal Funding Category	5307
MPO Project Information (reference number, etc)		Federal (FTA) Funds	\$131,031
		State Funds from TxDOT	0
	SR-PT4	Other Funds	26,206
Apportionment Year	2011	Fiscal Year Cost	\$157,237
Project Phase			
Brief Project Description		Total Project Cost	\$157,237
	Capital, Americans with Disability Act	Trans. Dev. Credits Requested	\$0
		Trans. Dev. Credits Awarded (Date & Amount)	\$0
Sec 5309 ID Number			
Amendment Date & Action			

<u>General Project Information</u>		<u>Funding Information (YOE)</u>	
Project Sponsor	Tyler Transit	Federal Funding Category	5307
MPO Project Information (reference number, etc)		Federal (FTA) Funds	\$239,478
		State Funds from TxDOT	0
	SR-PT4	Other Funds	59,869
Apportionment Year	2011	Fiscal Year Cost	\$299,347
Project Phase			
Brief Project Description		Total Project Cost	\$299,347
	Capital, Preventative Maintenance	Trans. Dev. Credits Requested	\$0
		Trans. Dev. Credits Awarded (Date & Amount)	\$0
Sec 5309 ID Number			
Amendment Date & Action			

<u>General Project Information</u>		<u>Funding Information (YOE)</u>	
Project Sponsor	Tyler Transit	Federal Funding Category	5307
MPO Project Information (reference number, etc)		Federal (FTA) Funds	\$16,000
		State Funds from TxDOT	0
	SR-PT4	Other Funds	4,000
Apportionment Year	2011	Fiscal Year Cost	\$20,000
Project Phase			
Brief Project Description		Total Project Cost	\$20,000
	Planning	Trans. Dev. Credits Requested	\$0
		Trans. Dev. Credits Awarded (Date & Amount)	\$0
Sec 5309 ID Number		Trans. Dev. Credits Awarded (Date & Amount)	\$0
Sec 5309 ID Number			
Amendment Date & Action			

<u>General Project Information</u>		<u>Funding Information (YOE)</u>	
Project Sponsor	Tyler Transit	Federal Funding Category	5307
MPO Project Information (reference number, etc)		Federal (FTA) Funds	\$8,000
		State Funds from TxDOT	0
	SR-PT4	Other Funds	2,000
Apportionment Year	2011	Fiscal Year Cost	\$10,000
Project Phase			
Brief Project Description		Total Project Cost	\$10,000
	Security	Trans. Dev. Credits Requested	\$0
		Trans. Dev. Credits Awarded (Date & Amount)	\$0
Sec 5309 ID Number			
Amendment Date & Action			

FY 2011 TRANSIT PROJECT DESCRIPTIONS
Tyler Area MPO TRANSPORTATION IMPROVEMENT PROGRAM

Tyler

YOE = Year of Expenditure

<u>General Project Information</u>		<u>Funding Information (YOE)</u>	
Project Sponsor	Tyler Transit	Federal Funding Category	5307
MPO Project Information (reference number, etc)		Federal (FTA) Funds	\$915,801
		State Funds from TxDOT	274,861
	SR-PT4	Other Funds	183,040
Apportionment Year	2011	Fiscal Year Cost	\$1,373,702
Project Phase			
Brief Project Description		Total Project Cost	\$0
	Operating Funds, Public Transit	Trans. Dev. Credits Requested	\$0
		Trans. Dev. Credits Awarded	
Sec 5309 ID Number		(Date & Amount)	\$0
Amendment Date & Action			

<u>General Project Information</u>		<u>Funding Information (YOE)</u>	
Project Sponsor	Tyler Transit	Federal Funding Category	5310
MPO Project Information (reference number, etc)		Federal (FTA) Funds	\$17,008
		State Funds from TxDOT	0
	SR-PT4	Other Funds	4,252
Apportionment Year	2011	Fiscal Year Cost	\$21,260
Project Phase			
Brief Project Description		Total Project Cost	\$21,260
	Capital, Preventative Maintenance	Trans. Dev. Credits Requested	\$0
		Trans. Dev. Credits Awarded	
Sec 5309 ID Number		(Date & Amount)	\$0
Amendment Date & Action			

<u>General Project Information</u>		<u>Funding Information (YOE)</u>	
Project Sponsor	Tyler Transit	Federal Funding Category	5310
MPO Project Information (reference number, etc)		Federal (FTA) Funds	\$80,522
		State Funds from TxDOT	0
	SR-PT4	Other Funds	20,131
Apportionment Year	2011	Fiscal Year Cost	\$100,653
Project Phase			
Brief Project Description		Total Project Cost	\$100,653
	Purchase of Service	Trans. Dev. Credits Requested	\$0
		Trans. Dev. Credits Awarded	
Sec 5309 ID Number		(Date & Amount)	\$0
Amendment Date & Action			

FY 2012 TRANSIT PROJECT DESCRIPTIONS
Tyler Area MPO TRANSPORTATION IMPROVEMENT PROGRAM

Tyler

YOE = Year of Expenditure

<u>General Project Information</u>		<u>Funding Information (YOE)</u>	
Project Sponsor	Tyler Transit	Federal Funding Category	5307
MPO Project Information (reference number, etc)		Federal (FTA) Funds	\$131,031
		State Funds from TxDOT	\$0
	SR-PT5	Other Funds	\$26,206
Apportionment Year	2012	Fiscal Year Cost	\$157,237
Project Phase			
Brief Project Description		Total Project Cost	\$157,237
	Capital, Americans with Disability Act	Trans. Dev. Credits Requested	\$0
		Trans. Dev. Credits Awarded (Date & Amount)	\$0
Sec 5309 ID Number			
Amendment Date & Action			

<u>General Project Information</u>		<u>Funding Information (YOE)</u>	
Project Sponsor	Tyler Transit	Federal Funding Category	5307
MPO Project Information (reference number, etc)		Federal (FTA) Funds	\$239,478
		State Funds from TxDOT	\$0
	SR-PT5	Other Funds	\$59,869
Apportionment Year	2012	Fiscal Year Cost	\$299,347
Project Phase			
Brief Project Description		Total Project Cost	\$299,347
	Capital, Preventative Maintenance	Trans. Dev. Credits Requested	\$0
		Trans. Dev. Credits Awarded (Date & Amount)	\$0
Sec 5309 ID Number			
Amendment Date & Action			

<u>General Project Information</u>		<u>Funding Information (YOE)</u>	
Project Sponsor	Tyler Transit	Federal Funding Category	5307
MPO Project Information (reference number, etc)		Federal (FTA) Funds	\$16,000
		State Funds from TxDOT	\$0
	SR-PT5	Other Funds	\$4,000
Apportionment Year	2012	Fiscal Year Cost	\$20,000
Project Phase			
Brief Project Description		Total Project Cost	\$20,000
	Planning	Trans. Dev. Credits Requested	\$0
		Trans. Dev. Credits Awarded (Date & Amount)	\$0
Sec 5309 ID Number		Trans. Dev. Credits Awarded (Date & Amount)	\$0
Sec 5309 ID Number			
Amendment Date & Action			

<u>General Project Information</u>		<u>Funding Information (YOE)</u>	
Project Sponsor	Tyler Transit	Federal Funding Category	5307
MPO Project Information (reference number, etc)		Federal (FTA) Funds	\$8,000
		State Funds from TxDOT	\$0
	SR-PT5	Other Funds	\$2,000
Apportionment Year	2012	Fiscal Year Cost	\$10,000
Project Phase			
Brief Project Description		Total Project Cost	\$10,000
	Security	Trans. Dev. Credits Requested	\$0
		Trans. Dev. Credits Awarded (Date & Amount)	\$0
Sec 5309 ID Number			
Amendment Date & Action			

FY 2012 TRANSIT PROJECT DESCRIPTIONS
Tyler Area MPO TRANSPORTATION IMPROVEMENT PROGRAM

Tyler

YOE = Year of Expenditure

<u>General Project Information</u>		<u>Funding Information (YOE)</u>	
Project Sponsor	Tyler Transit	Federal Funding Category	5307
MPO Project Information (reference number, etc)	SR-PT5	Federal (FTA) Funds	\$915,801
		State Funds from TxDOT	\$274,861
		Other Funds	\$183,040
Apportionment Year	2012	Fiscal Year Cost	\$1,373,702
Project Phase			
Brief Project Description		Total Project Cost	\$1,373,702
	Operating Funds, Public Transit	Trans. Dev. Credits Requested	\$0
		Trans. Dev. Credits Awarded (Date & Amount)	\$0
Sec 5309 ID Number			
Amendment Date & Action			
<u>General Project Information</u>		<u>Funding Information (YOE)</u>	
Project Sponsor	Tyler Transit	Federal Funding Category	5310
MPO Project Information (reference number, etc)	SR-PT5	Federal (FTA) Funds	\$97,530
		State Funds from TxDOT	\$0
		Other Funds	\$24,383
Apportionment Year	2012	Fiscal Year Cost	\$121,913
Project Phase			
Brief Project Description		Total Project Cost	\$121,913
	Purchase of Service	Trans. Dev. Credits Requested	\$0
		Trans. Dev. Credits Awarded (Date & Amount)	\$0
Sec 5309 ID Number			
Amendment Date & Action			

FY 2013 TRANSIT PROJECT DESCRIPTIONS
Tyler Area MPO TRANSPORTATION IMPROVEMENT PROGRAM

Tyler

YOE = Year of Expenditure

<u>General Project Information</u>		<u>Funding Information (YOE)</u>	
Project Sponsor	Tyler Transit	Federal Funding Category	5307
MPO Project Information (reference number, etc)		Federal (FTA) Funds	\$131,031
		State Funds from TxDOT	\$0
	SR-PT6	Other Funds	\$26,206
Apportionment Year	2013	Fiscal Year Cost	\$157,237
Project Phase			
Brief Project Description		Total Project Cost	\$157,237
	Capital, Americans with Disability Act	Trans. Dev. Credits Requested	\$0
		Trans. Dev. Credits Awarded (Date & Amount)	\$0
Sec 5309 ID Number			
Amendment Date & Action			

<u>General Project Information</u>		<u>Funding Information (YOE)</u>	
Project Sponsor	Tyler Transit	Federal Funding Category	5307
MPO Project Information (reference number, etc)		Federal (FTA) Funds	\$239,478
		State Funds from TxDOT	\$0
	SR-PT6	Other Funds	\$59,869
Apportionment Year	2013	Fiscal Year Cost	\$299,347
Project Phase			
Brief Project Description		Total Project Cost	\$299,347
	Capital, Preventative Maintenance	Trans. Dev. Credits Requested	\$0
		Trans. Dev. Credits Awarded (Date & Amount)	\$0
Sec 5309 ID Number			
Amendment Date & Action			

<u>General Project Information</u>		<u>Funding Information (YOE)</u>	
Project Sponsor	Tyler Transit	Federal Funding Category	5307
MPO Project Information (reference number, etc)		Federal (FTA) Funds	\$16,000
		State Funds from TxDOT	\$0
	SR-PT6	Other Funds	\$4,000
Apportionment Year	2013	Fiscal Year Cost	\$20,000
Project Phase			
Brief Project Description		Total Project Cost	\$20,000
	Planning	Trans. Dev. Credits Requested	\$0
		Trans. Dev. Credits Awarded (Date & Amount)	\$0
Sec 5309 ID Number		Trans. Dev. Credits Awarded (Date & Amount)	\$0
Sec 5309 ID Number			
Amendment Date & Action			

<u>General Project Information</u>		<u>Funding Information (YOE)</u>	
Project Sponsor	Tyler Transit	Federal Funding Category	5307
MPO Project Information (reference number, etc)		Federal (FTA) Funds	\$8,000
		State Funds from TxDOT	\$0
	SR-PT6	Other Funds	\$2,000
Apportionment Year	2013	Fiscal Year Cost	\$10,000
Project Phase			
Brief Project Description		Total Project Cost	\$10,000
	Security	Trans. Dev. Credits Requested	\$0
		Trans. Dev. Credits Awarded (Date & Amount)	\$0
Sec 5309 ID Number			
Amendment Date & Action			

FY 2013 TRANSIT PROJECT DESCRIPTIONS
Tyler Area MPO TRANSPORTATION IMPROVEMENT PROGRAM

Tyler		YOE = Year of Expenditure	
<u>General Project Information</u>		<u>Funding Information (YOE)</u>	
Project Sponsor	Tyler Transit	Federal Funding Category	5307
MPO Project Information (reference number, etc)		Federal (FTA) Funds	\$915,801
		State Funds from TxDOT	\$274,861
	SR-PT6	Other Funds	\$183,040
Apportionment Year	2013	Fiscal Year Cost	\$1,373,702
Project Phase			
Brief Project Description		Total Project Cost	\$1,373,702
	Operating Funds, Public Transit	Trans. Dev. Credits Requested	\$0
		Trans. Dev. Credits Awarded	
Sec 5309 ID Number		(Date & Amount)	\$0
Amendment Date & Action			
<u>General Project Information</u>		<u>Funding Information (YOE)</u>	
Project Sponsor	Tyler Transit	Federal Funding Category	5310
MPO Project Information (reference number, etc)		Federal (FTA) Funds	\$97,530
		State Funds from TxDOT	\$0
	SR-PT6	Other Funds	\$24,383
Apportionment Year	2013	Fiscal Year Cost	\$121,913
Project Phase			
Brief Project Description		Total Project Cost	\$121,913
	Purchase of Service	Trans. Dev. Credits Requested	\$0
		Trans. Dev. Credits Awarded	
Sec 5309 ID Number		(Date & Amount)	\$0
Amendment Date & Action			

FY 2014 TRANSIT PROJECT DESCRIPTIONS
Tyler Area MPO TRANSPORTATION IMPROVEMENT PROGRAM

Tyler		YOE = Year of Expenditure	
<u>General Project Information</u>		<u>Funding Information (YOE)</u>	
Project Sponsor	Tyler Transit	Federal Funding Category	5307
MPO Project Information (reference number, etc)		Federal (FTA) Funds	\$131,031
		State Funds from TxDOT	\$0
	SR-PT7	Other Funds	\$26,206
Apportionment Year	2014	Fiscal Year Cost	\$157,237
Project Phase			
Brief Project Description		Total Project Cost	\$157,237
	Capital, Americans with Disability Act	Trans. Dev. Credits Requested	\$0
		Trans. Dev. Credits Awarded (Date & Amount)	\$0
Sec 5309 ID Number			
Amendment Date & Action			
<u>General Project Information</u>		<u>Funding Information (YOE)</u>	
Project Sponsor	Tyler Transit	Federal Funding Category	5307
MPO Project Information (reference number, etc)		Federal (FTA) Funds	\$239,478
		State Funds from TxDOT	\$0
	SR-PT7	Other Funds	\$59,869
Apportionment Year	2014	Fiscal Year Cost	\$299,347
Project Phase			
Brief Project Description		Total Project Cost	\$299,347
	Capital, Preventative Maintenance	Trans. Dev. Credits Requested	\$0
		Trans. Dev. Credits Awarded (Date & Amount)	\$0
Sec 5309 ID Number			
Amendment Date & Action			
<u>General Project Information</u>		<u>Funding Information (YOE)</u>	
Project Sponsor	Tyler Transit	Federal Funding Category	5307
MPO Project Information (reference number, etc)		Federal (FTA) Funds	\$16,000
		State Funds from TxDOT	\$0
	SR-PT7	Other Funds	\$4,000
Apportionment Year	2014	Fiscal Year Cost	\$20,000
Project Phase			
Brief Project Description		Total Project Cost	\$20,000
	Planning	Trans. Dev. Credits Requested	\$0
		Trans. Dev. Credits Awarded (Date & Amount)	\$0
Sec 5309 ID Number		Trans. Dev. Credits Awarded (Date & Amount)	\$0
Sec 5309 ID Number			
Amendment Date & Action			
<u>General Project Information</u>		<u>Funding Information (YOE)</u>	
Project Sponsor	Tyler Transit	Federal Funding Category	5307
MPO Project Information (reference number, etc)		Federal (FTA) Funds	\$8,000
		State Funds from TxDOT	\$0
	SR-PT7	Other Funds	\$2,000
Apportionment Year	2014	Fiscal Year Cost	\$10,000
Project Phase			
Brief Project Description		Total Project Cost	\$10,000
	Security	Trans. Dev. Credits Requested	\$0
		Trans. Dev. Credits Awarded (Date & Amount)	\$0
Sec 5309 ID Number			
Amendment Date & Action			

FY 2014 TRANSIT PROJECT DESCRIPTIONS
Tyler Area MPO TRANSPORTATION IMPROVEMENT PROGRAM

Tyler		YOE = Year of Expenditure	
<u>General Project Information</u>		<u>Funding Information (YOE)</u>	
Project Sponsor	Tyler Transit	Federal Funding Category	5307
MPO Project Information (reference number, etc)		Federal (FTA) Funds	\$915,801
		State Funds from TxDOT	\$274,861
	SR-PT7	Other Funds	\$183,040
Apportionment Year	2014	Fiscal Year Cost	\$1,373,702
Project Phase			
Brief Project Description		Total Project Cost	\$0
	Operating Funds, Public Transit	Trans. Dev. Credits Requested	\$0
		Trans. Dev. Credits Awarded (Date & Amount)	\$0
Sec 5309 ID Number			
Amendment Date & Action			
<u>General Project Information</u>		<u>Funding Information (YOE)</u>	
Project Sponsor	Tyler Transit	Federal Funding Category	5310
MPO Project Information (reference number, etc)		Federal (FTA) Funds	\$97,530
		State Funds from TxDOT	\$0
	SR-PT7	Other Funds	\$24,383
Apportionment Year	2014	Fiscal Year Cost	\$121,913
Project Phase			
Brief Project Description		Total Project Cost	\$121,913
	Purchase of Service	Trans. Dev. Credits Requested	\$0
		Trans. Dev. Credits Awarded (Date & Amount)	\$0
Sec 5309 ID Number			
Amendment Date & Action			

FINANCIAL SUMMARY

Tyler Area Metropolitan Planning Organization
FY 2011 - 2014 Transportation Improvement Program
Highway Financial Summary - Year of Expenditure Costs
June OOC 2012 Quarterly Revisions

Funding by Category

Category	Description	FY 2011		FY 2012		FY 2013		FY 2014		Total FY 2011 - 2014	
		Programmed	Authorized	Programmed	Authorized	Programmed	Authorized	Programmed	Authorized	Programmed	Authorized
1	Preventive Maintenance and Rehabilitation	\$0	\$0	\$0	\$0	\$0	\$0	\$0	\$0	\$0	\$0
2M	Metropolitan Area (TMA) Corridor Projects	\$0	\$0	\$0	\$0	\$0	\$0	\$0	\$0	\$0	\$0
2U	Urban Area (Non- TMA) Corridor Projects	\$0	\$0	\$0	\$0	\$2,037,467	\$2,037,467	\$0	\$0	\$2,037,467	\$2,037,467
3	Non-Traditionally Funded Transportation Project	\$0	\$0	\$0	\$0	\$7,317,700	\$7,317,700	\$0	\$0	\$7,317,700	\$7,317,700
4	Statewide Connectivity Corridor Projects	\$0	\$0	\$0	\$0	\$0	\$0	\$0	\$0	\$0	\$0
5	CMAQ	\$0	\$0	\$0	\$0	\$0	\$0	\$0	\$0	\$0	\$0
6	Structures	\$0	\$0	\$0	\$0	\$0	\$0	\$0	\$0	\$0	\$0
7	Metro Mobility & Rehab	\$0	\$0	\$0	\$0	\$0	\$0	\$0	\$0	\$0	\$0
8	Safety	\$0	\$0	\$0	\$0	\$0	\$0	\$0	\$0	\$0	\$0
9	Transportation Enhancements	\$0	\$0	\$0	\$0	\$0	\$0	\$0	\$0	\$0	\$0
10	Supplemental Transportation Projects	\$0	\$0	\$0	\$0	\$0	\$0	\$0	\$0	\$0	\$0
11	District Discretionary	\$0	\$0	\$0	\$0	\$1,750,000	\$1,750,000	\$0	\$0	\$1,750,000	\$1,750,000
12	Strategic Priority	\$0	\$0	\$0	\$0	\$0	\$0	\$0	\$0	\$0	\$0
LC	Local Contributions	\$73,768,945	\$73,768,945	\$0	\$0	\$50,000	\$50,000	\$0	\$0	\$73,818,945	\$73,818,945
	Total	\$73,768,945	\$73,768,945	\$0	\$0	\$11,155,167	\$11,155,167	\$0	\$0	\$84,924,112	\$84,924,112

Funding Participation Source

Source	FY 2011	FY 2012	FY 2013	FY 2014	Total
Federal	\$0	\$0	\$3,029,974	\$0	\$3,029,974
State	\$0	\$0	\$757,493	\$0	\$757,493
Local Match	\$0	\$0	\$0	\$0	\$0
Local Contributions	\$73,768,945	\$0	\$50,000	\$0	\$73,818,945
CAT 3 - RTR	\$0	\$0	\$0	\$0	\$0
CAT 3 - Prop 12	\$0	\$0	\$7,317,700	\$0	\$7,317,700
CAT 3 - Prop 14	\$0	\$0	\$0	\$0	\$0
CAT 3 - TMF	\$0	\$0	\$0	\$0	\$0
CAT 3 - PTF	\$0	\$0	\$0	\$0	\$0
Other - Section 5306	\$0	\$0	\$0	\$0	\$0
Total	\$73,768,945	\$0	\$11,155,167	\$0	\$84,924,112

Transit Financial Summary
Tyler Area Metropolitan Planning Organization
FY 2011 - 2014 Transportation Improvement Program

All Figures in Year of Expenditure (VOE) Dollars

	FY 2011			FY 2012			FY 2013			Total
	Federal	State/Local	Total	Federal	State/Local	Total	Federal	State/Local	Total	
Transit Program										
1 Sec. 5307 - Urbanized Formula >200K	1,310,310	549,976	1,860,286	1,310,310	549,976	1,860,286	1,310,310	549,976	1,860,286	0
2 Sec. 5307 - Urbanized Formula <200K										
3 Sec. 5309 - Discretionary	97,530	24,383	121,913	97,530	24,383	121,913	97,530	24,383	121,913	0
4 Sec. 5310 - Elderly & Individuals w/Disabilities										
5 Sec. 5311 - Nonurbanized Formula										
6 Sec. 5316 - JARC >200K										
7 Sec. 5316 - JARC <200K	0	0	0	0	0	0	0	0	0	0
8 Sec. 5316 - JARC Nonurbanized										
9 Sec. 5317 - New Freedom >200K										
10 Sec. 5317 - New Freedom <200K	0	0	0	0	0	0	0	0	0	0
11 Sec. 5317 - New Freedom Nonurbanized										
12 Other FTA										
13 Regionally Significant or Other (incl FHWA transfers)										
Total Funds	\$1,407,840	\$574,359	\$1,982,199	\$1,407,840	\$574,359	\$1,982,199	\$1,407,840	\$574,359	\$1,982,199	
Transportation Development Credits										
Requested			\$0			\$0			\$0	\$0
Awarded			\$0			\$0			\$0	\$0

Current as of May 21, 2010

All Figures in Year of Expenditure (VOE) Dollars

	FY 2014			Total		
	Federal	State/Local	Total	Federal	State/Local	Total
Transit Program						
1 Sec. 5307 - Urbanized Formula >200K	1,310,310	549,976	1,860,286	5,241,240	2,199,904	7,441,144
2 Sec. 5307 - Urbanized Formula <200K						
3 Sec. 5309 - Discretionary	97,530	24,383	121,913	390,120	97,532	487,652
4 Sec. 5310 - Elderly & Individuals w/Disabilities						
5 Sec. 5311 - Nonurbanized Formula						
6 Sec. 5316 - JARC >200K						
7 Sec. 5316 - JARC <200K	0	0	0	0	0	0
8 Sec. 5316 - JARC Nonurbanized						
9 Sec. 5317 - New Freedom >200K						
10 Sec. 5317 - New Freedom <200K	0	0	0	0	0	0
11 Sec. 5317 - New Freedom Nonurbanized						
12 Other FTA						
13 Regionally Significant or Other (incl FHWA transfers)						
Total Funds	\$1,407,840	\$574,359	\$1,982,199	\$5,631,360	\$2,297,436	\$7,928,796
Transportation Development Credits						
Requested			\$0			\$0
Awarded			\$0			\$0

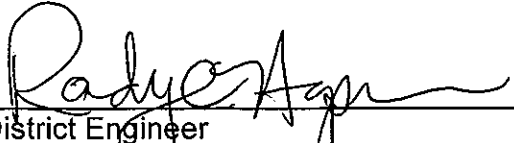
Tony Filippini 6-3-2010

MPO SELF-CERTIFICATION FOR ATTAINMENT AREAS

In accordance with 23 CFR 450.334, the TEXAS DEPARTMENT OF TRANSPORTATION, and the Tyler Area Metropolitan Planning Organization for the Tyler urbanized area hereby certify that the transportation planning process is addressing the major issues in the metropolitan planning area and is being conducted in accordance with all applicable requirements of:

- (1) 23 U.S.C Sections 134 and 135, 49 U.S.C. Section 5323(l), 23 CFR Part 450.220 and 49 CFR Part 613 (Federal Register, October 28, 1993);
- (2) Title VI of the Civil Rights Act of 1964 and the Title VI assurance executed by each State under 23 U.S.C. section 324 and 29 U.S.C. section 794;
- (3) Section 1101(b) of the Safe, Accountable, Flexible and Efficient Transportation Equity Act: A Legacy for Users (SAFETEA-LU) (Pub. L.109-159) regarding the involvement of Disadvantaged Business Enterprises in FHWA and FTA funded planning projects (Sec. 105(f), Pub. L. 97-424, 96 Stat. 2100; 49 CFR, Subtitle A, Part 26);
- (4) The provisions of the Americans with Disabilities Act of 1990 (Pub. L. 101-336, 104 Stat. 327, as amended) and U. S. DOT implementing regulations "Transportation for Individuals with Disabilities" (49 CFR Parts 27, 37, and 38);
- (5) The provision of 49 CFR Part 20 regarding restrictions on influencing certain activities;

TEXAS DEPARTMENT
OF TRANSPORTATION
TYLER DISTRICT


District Engineer

Date

6/29/10

TYLER AREA METROPOLITAN
PLANNING ORGANIZATION
POLICY BOARD CHAIRPERSON


Chairperson, MPO Policy Committee

Date

6.28.10

APPENDICES

APPENDIX A

HIGHWAY PROJECTS NON-MOBILITY

The following non-mobility projects are provided to reflect more accurately the total transportation system improvements planned for the Tyler Area Metropolitan Area. The Tyler Area MPO has opted to utilize the grouped projects category listing. Grouping projects by these categories provides an efficient and streamlined method of programming and implementing these projects. If additional funding becomes available at a later time, the funds can be advanced into these additional projects.

Grouped Project CSJs **Table 1**
Definition of Grouped Projects for Use in the STIP
 Revised May 18, 2005

PROPOSED CSJ	GROUPED PROJECT CATEGORY	DEFINITION
5000-00-950	PE – Preliminary Engineering	Preliminary Engineering for any project that is not added capacity in a non-attainment area. Includes activities which do not involve or lead directly to construction such as planning and technical studies, grants for training and research programs.
5000-00-951	Right of Way Acquisition	Right of Way acquisition for any project that is not added capacity in a non-attainment area. Includes relocation assistance, hardship acquisition and protective buying.
5000-00-952 5000-00-957 5000-00-958	Preventive Maintenance and Rehabilitation	Projects to include pavement repair to preserve existing pavement so that it may achieve its designed loading. Includes seal coats, overlays, resurfacing, restoration and rehabilitation done with existing ROW. Also includes modernization of a highway by reconstruction, adding shoulders or adding auxiliary lanes (e.g., parking, weaving, turning, climbing, non-added capacity).
5000-00-953	Bridge Replacement and Rehabilitation	Projects to replace and/or rehabilitate functionally obsolete or structurally deficient bridges.
5000-00-954	Railroad Grade Separations	Projects to construct or replace existing highway-railroad grade crossings and to rehabilitate and/or replace deficient railroad underpasses, resulting in no added capacity.
5800-00-950	Safety	Projects to include the construction or replacement/rehabilitation of guard rails, median barriers, crash cushions, pavement markings, skid treatments, medians, lighting improvements, curb ramps, railroad/highway crossing warning devices, fencing, intersection improvements (e.g., turn lanes), signalization projects and interchange modifications. Also includes projects funded via the Federal Hazard Elimination Program and the Federal Railroad Signal Safety Program.
5000-00-956	Landscaping	Project consisting of typical right-of-way landscape development, establishment and aesthetic improvements to include any associated erosion control and environmental mitigation activities.

Grouped Project CSJs **Table 1**
Definition of Grouped Projects for Use in the STIP
 Revised May 18, 2005

PROPOSED CSJ	GROUPED PROJECT CATEGORY	DEFINITION
5800-00-915	Intelligent Transportation Systems Deployment	Highway traffic operation improvement projects including the installation of ramp metering control devices, variable message signs, traffic monitoring equipment and projects in the Federal ITS/IVHS programs.
5000-00-916	Bicycle and Pedestrian	Construction or rehabilitation of bicycle and pedestrian lanes, paths and facilities.
5000-00-917	Safety Rest Areas and Truck Weigh Stations	Construction and improvement of rest areas and truck weigh stations.
5000-00-918	Transit Improvements	Projects include the construction and improvement of small passenger shelters and information kiosks. Also includes the construction and improvement of rail storage/maintenance facilities bus transfer facilities where minor amounts of additional land are required and there is not a substantial increase in the number of users.

File: PPD 24 (STIP)
 W:\Final\Planning\STIP\General\Grouped Projects STIP Letter-revised Table 1 05-18-2005.jmc

STATEWIDE TRANSPORTATION IMPROVEMENT PROGRAM

TIP FY 2011-2014
GROUPED PROJECTS
TYLER METROPOLITAN PLANNING ORGANIZATION
FY 2011

DISTRICT	COUNTY	CSJ	HWY	PHASE	CITY	PROJECT SPONSOR	YOY COST
10 - TYLER	SMITH	0190-05-062	US 69	C	TYLER	SM-47	\$ 306,153
LIMITS FROM 0.3 MI SE OF SH 110 (MLK BVD), SE						REVISION DATE: 07/2010	
LIMITS TO: SS 147 IN TYLER (ON GENTRY PKWY)						MPO PROJ NUM:	
PROJECT REPAVE ROADWAY USING NOVA CHIP METHOD						FUNDING CAT(S): 11	
DESCR:						PROJECT HISTORY:	
REMARKS THIS PROJECT IS ALSO IN THE 2008 - 2011 STIP						REPAVE ROADWAY USING NOVA CHIP METHOD	
P7:							

TOTAL PROJECT COST INFORMATION			AUTHORIZED FUNDING BY CATEGORY/SHARE					
			FEDERAL	STATE	LOCAL	LC	TOTAL	
PRELIM ENG:	\$ 15,001	COST OF APPROVED PHASES: \$ 306,153	11-DIST DISC:	\$ 244,922	\$ 61,231	\$ 0	\$ 0	\$ 306,153*
ROW PURCHASE:	\$ 0		TOTAL:	\$ 244,922	\$ 61,231	\$ 0	\$ 0	\$ 306,153
CONST COST:	\$ 306,153							
CONST ENG:	\$ 22,961							
CONTING:	\$ 21,431							
IND COSTS:	\$ 18,981							
BND FINANCING:	\$ 0							
TOTAL PRJ COST:	\$ 384,528							

DISTRICT	COUNTY	CSJ	HWY	PHASE	CITY	PROJECT SPONSOR	YOY COST
10 - TYLER	SMITH	0190-08-010	SP 147	C	TYLER		\$ 650,133
LIMITS FROM US 69/GLENWOOD BLVD IN TYLER, E						REVISION DATE: 07/2010	
LIMITS TO: US 271 (ON GENTRY PARKWAY)						MPO PROJ NUM: SM-47	
PROJECT REPAVE ROADWAY USING NOVA CHIP METHOD						FUNDING CAT(S): 1	
DESCR:						PROJECT HISTORY:	
REMARKS THIS PROJECT ALSO LISTED IN THE 2008 - 2011 STIP						REPAVE ROADWAY USING NOVA CHIP METHOD	
P7:							

TOTAL PROJECT COST INFORMATION			AUTHORIZED FUNDING BY CATEGORY/SHARE					
			FEDERAL	STATE	LOCAL	LC	TOTAL	
PRELIM ENG:	\$ 31,857	COST OF APPROVED PHASES: \$ 650,133	1-PRVNT	\$ 520,106	\$ 130,027	\$ 0	\$ 0	\$ 650,133*
ROW PURCHASE:	\$ 0		TOTAL:	\$ 520,106	\$ 130,027	\$ 0	\$ 0	\$ 650,133
CONST COST:	\$ 650,133							
CONST ENG:	\$ 48,760							
CONTING:	\$ 45,505							
IND COSTS:	\$ 40,308							
BND FINANCING:	\$ 0							
TOTAL PRJ COST:	\$ 816,567							

DISTRICT	COUNTY	CSJ	HWY	PHASE	CITY	PROJECT SPONSOR	YOY COST
10 - TYLER	SMITH	0910-16-104	VA	C	TYLER		\$ 340,302
LIMITS FROM ON GENTRY PKWY (US 69,SS147,US271)						REVISION DATE: 07/2010	
LIMITS TO: FR LP323(N),S,E&N TO FM14(E,MLK JR)						MPO PROJ NUM: SNM-45	
PROJECT BEAUTIFY 9 SIGNAL INTRSCNTNS, CNST 2 RAISED ISLAND PLANT BEDS LANDSCAPE & PLANT						FUNDING CAT(S): 10,11,LC	
DESCR: SMALL TREES IN ROW						PROJECT HISTORY:	
REMARKS THIS PROJECT ALSO IN THE 2008 - 2011 STIP						BEAUTIFY 9 SIGNAL INTRSCNTNS, CNST 2 RAISED ISLAND PLANT BEDS, LANDSCAPE & PLANT SMALL TREES IN ROW	
P7:							

TOTAL PROJECT COST INFORMATION			AUTHORIZED FUNDING BY CATEGORY/SHARE					
			FEDERAL	STATE	LOCAL	LC	TOTAL	
PRELIM ENG:	\$ 20,418	COST OF APPROVED PHASES: \$ 340,302	10-MISC:	\$ 95,285	\$ 23,821	\$ 0	\$ 0	\$ 119,106*
ROW PURCHASE:	\$ 0		11-DIST DISC:	\$ 40,836	\$ 10,208	\$ 0	\$ 0	\$ 51,045*
CONST COST:	\$ 340,302		LOCAL CONTR:	\$ 0	\$ 0	\$ 170,151	\$ 0	\$ 170,151*
CONST ENG:	\$ 25,523		TOTAL:	\$ 136,121	\$ 34,030	\$ 170,151	\$ 0	\$ 340,302
CONTING:	\$ 23,821							
IND COSTS:	\$ 21,095							
BND FINANCING:	\$ 0							
TOTAL PRJ COST:	\$ 431,162							

PHASE: C = CONSTRUCTION, E = ENGINEERING, R = ROW, T = TRANSFER

* FUNDING NOT FIXED

STATEWIDE TRANSPORTATION IMPROVEMENT PROGRAM

TIP FY 2011-2014
GROUPED PROJECTS
TYLER METROPOLITAN PLANNING ORGANIZATION
FY 2011

DISTRICT	COUNTY	CSJ	HWY	PHASE	CITY	PROJECT SPONSOR	YOY COST
10 - TYLER	SMITH	0191-03-080	FM 2493	C,E	BULLARD		\$ 134,807

LIMITS FROM S OF FM 2813 IN GRESHAM, S

LIMITS TO: CHEROKEE C/L IN BULLARD

PROJECT INSTALL PROFILE MARKING CENTERLINE RUMBLE STRIPS

DESCR:

REMARKS THIS PROJECT IS ALSO IN THE 2008 - 2011 STIP

P7:

REVISION DATE: 07/2010

MPO PROJ NUM: SNM-43

FUNDING CAT(S): 8

PROJECT HISTORY: INSTALL RAISED CENTERLINE RUMBLE STRIPS

TOTAL PROJECT COST INFORMATION			AUTHORIZED FUNDING BY CATEGORY/SHARE					
			FEDERAL	STATE	LOCAL	LC	TOTAL	
PRELIM ENG:	\$ 5,877	COST OF APPROVED PHASES: \$ 134,807	8-SAFETY:	\$ 121,326	\$ 13,481	\$ C	\$ C	\$ 134,807*
ROW PURCHASE:	\$ C		TOTAL:	\$ 121,326	\$ 13,481	\$ C	\$ C	\$ 134,807
CONST COST:	\$ 119,935							
CONST ENG:	\$ 8,995							
CONTING:	\$ 8,395							
IND COSTS:	\$ 7,436							
BND FINANCING:	\$ C							
TOTAL PRJ COST:	\$ 150,638							

DISTRICT	COUNTY	CSJ	HWY	PHASE	CITY	PROJECT SPONSOR	YOY COST
10 - TYLER	SMITH	0245-06-077	SH 64	C,E	TYLER		\$ 118,412

LIMITS FROM 0.1 MI S OF SS 248 SE OF TYLER, SE

LIMITS TO: 0.6 MI NE OF SH 135 IN ARP

PROJECT INSTALL MILLED CENTERLINE RUMBLE STRIPS

DESCR:

REMARKS THIS PROJECT IS ALSO IN THE 2008 - 2011 STIP

P7:

REVISION DATE: 07/2010

MPO PROJ NUM: SNM-43

FUNDING CAT(S): 8

PROJECT HISTORY: 042401046 MILLED CENTERLINE RUMBLE STRIPS

TOTAL PROJECT COST INFORMATION			AUTHORIZED FUNDING BY CATEGORY/SHARE					
			FEDERAL	STATE	LOCAL	LC	TOTAL	
PRELIM ENG:	\$ 5,162	COST OF APPROVED PHASES: \$ 118,412	8-SAFETY:	\$ 106,571	\$ 11,841	\$ C	\$ C	\$ 118,412*
ROW PURCHASE:	\$ C		TOTAL:	\$ 106,571	\$ 11,841	\$ C	\$ C	\$ 118,412
CONST COST:	\$ 105,345							
CONST ENG:	\$ 7,901							
CONTING:	\$ 7,374							
IND COSTS:	\$ 6,532							
BND FINANCING:	\$ C							
TOTAL PRJ COST:	\$ 132,318							

DISTRICT	COUNTY	CSJ	HWY	PHASE	CITY	PROJECT SPONSOR	YOY COST
10 - TYLER	SMITH	0424-01-046	SH 31	C,E	OTHER		\$ 148,954

LIMITS FROM E OF FM 850(E), E

LIMITS TO: GREGG C/L

PROJECT INSTALL MILLED CENTERLINE RUMBLE STRIPS

DESCR:

REMARKS THIS PROJECT IS ALSO IN THE 2008 - 2011 STIP

P7:

REVISION DATE: 07/2010

MPO PROJ NUM: SNM-43

FUNDING CAT(S): 8

PROJECT HISTORY: INSTALL MILLED CENTERLINE RUMBLE STRIPS

TOTAL PROJECT COST INFORMATION			AUTHORIZED FUNDING BY CATEGORY/SHARE					
			FEDERAL	STATE	LOCAL	LC	TOTAL	
PRELIM ENG:	\$ 6,494	COST OF APPROVED PHASES: \$ 148,954	8-SAFETY:	\$ 134,059	\$ 14,895	\$ C	\$ C	\$ 148,954*
ROW PURCHASE:	\$ C		TOTAL:	\$ 134,059	\$ 14,895	\$ C	\$ C	\$ 148,954
CONST COST:	\$ 132,521							
CONST ENG:	\$ 9,935							
CONTING:	\$ 9,276							
IND COSTS:	\$ 8,216							
BND FINANCING:	\$ C							
TOTAL PRJ COST:	\$ 166,446							

PHASE: C = CONSTRUCTION, E = ENGINEERING, R = ROW, T = TRANSFER

* FUNDING NOT FIXED

STATEWIDE TRANSPORTATION IMPROVEMENT PROGRAM

TIP FY 2011-2014
GROUPED PROJECTS
TYLER METROPOLITAN PLANNING ORGANIZATION
FY 2011

DISTRICT	COUNTY	CSJ	HWY	PHASE	CITY	PROJECT SPONSOR	YOE COST
10 - TYLER	SMITH	0492-01-036	FM 14	C,E	TYLER		\$ 278,217
LIMITS FROM WOOD C/L AT SABINE RIVER, S						REVISION DATE: 07/2010	
LIMITS TO: 0.3 MI S OF SL 323 IN TYLER						MPO PROJ NUM: SNM-43	
PROJECT INSTALL PROFILE MARKING CENTERLINE RUMBLE STRIPS (SECTIONS)						FUNDING CAT(S): 8	
DESCR:						PROJECT HISTORY: 115101011AISED CENTERLINE RUMBLE STRIPS (SECTIONS)	
REMARKS __THIS PROJECT IS ALSO IN THE 2008 - 2011 STIP						PROJECT HISTORY:	
P7:							
TOTAL PROJECT COST INFORMATION			AUTHORIZED FUNDING BY CATEGORY/SHARE				
PRELIM ENG:	\$ 12,125	COST OF APPROVED PHASES:					
ROW PURCHASE:	\$ (8-SAFETY:	\$ 250,395	\$ 27,822	\$ (\$ 278,217*
CONST COST:	\$ 247,524		TOTAL:	\$ 250,395	\$ 27,822	\$ (\$ 278,217
CONST ENG:	\$ 18,564						
CONTING:	\$ 17,327						
IND COSTS:	\$ 15,346						
BND FINANCING:	\$ (
TOTAL PRJ COST: \$ 310,890							

DISTRICT	COUNTY	CSJ	HWY	PHASE	CITY	PROJECT SPONSOR	YOE COST		
10 - TYLER	SMITH	1151-01-011	FM 848	C,E	WHITEHOUSE		\$ 140,444		
LIMITS FROM SH 64 IN BASCOM, S						REVISION DATE: 07/2010			
LIMITS TO: FM 346 IN WHITEHOUSE						MPO PROJ NUM: SNM-43			
PROJECT INSTALL PROFILE MARKING CENTERLINE RUMBLE STRIPS						FUNDING CAT(S): 8			
DESCR:						PROJECT HISTORY: INSTALL RAISED CENTERLINE RUMBLE STRIPS			
REMARKS _THIS PROJECT IS ALSO IN THE 2008 - 2011 STIP						PROJECT HISTORY:			
P7:									
TOTAL PROJECT COST INFORMATION			AUTHORIZED FUNDING BY CATEGORY/SHARE						
			FEDERAL		STATE		LOCAL	LC	TOTAL
PRELIM ENG: \$ 6,125			8-SAFETY: \$ 126,400		\$ 14,044		\$ 0	\$ 0	140,444*
ROW PURCHASE: \$ 0			TOTAL: \$ 126,400		\$ 14,044		\$ 0	\$ 0	140,444
CONST COST: \$ 124,950									
CONST ENG: \$ 9,371									
CONTING: \$ 8,747									
IND COSTS: \$ 7,747									
BND FINANCING: \$ 0									
TOTAL PRJ COST: \$ 156,937									

DISTRICT	COUNTY	CSJ	HWY	PHASE	CITY	PROJECT SPONSOR	YOE COST
10 - TYLER	SMITH	0190-05-060	US 69	C,E	TYLER		\$ 322,964
LIMITS FROM LP 323 IN TYLER, SE						REVISION DATE: 07/2010	
LIMITS TO: SP 147 (GENTRY) AT GLENWOOD BVD						MPO PROJ NUM: SM-47	
PROJECT SEAL COAT & PAVEMENT MARKINGS						FUNDING CAT(S): 1	
DESCR:					PROJECT HISTORY: SEAL COAT & PAVEMENT MARKINGS		
REMARKS					PROJECT HISTORY:		
P7:							
TOTAL PROJECT COST INFORMATION			AUTHORIZED FUNDING BY CATEGORY/SHARE				
PRELIM ENG: \$ 14,400		COST OF APPROVED PHASES: \$ 322,964	FEDERAL STATE LOCAL LC TOTAL				
ROW PURCHASE: \$ (1-PRVNT	\$ 258,371	\$ 64,593	\$ (\$ 322,964*
CONST COST: \$ 293,871			TOTAL:	\$ 258,371	\$ 64,593	\$ (\$ 322,964
CONST ENG: \$ 14,694							
CONTING: \$ 19,102							
IND COSTS: \$ 18,220							
BND FINANCING: \$ (
TOTAL PRJ COST: \$ 360,286							

PHASE: C = CONSTRUCTION, E = ENGINEERING, R = ROW, T = TRANSFER

* FUNDING NOT FIXED

STATEWIDE TRANSPORTATION IMPROVEMENT PROGRAM

TIP FY 2011-2014

GROUPED PROJECTS

TYLER METROPOLITAN PLANNING ORGANIZATION

FY 2011

DISTRICT	COUNTY	CSJ	HWY	PHASE	CITY	PROJECT SPONSOR	YOE COST	
10 - TYLER	SMITH	0190-06-011	US 69	C,E	TYLER		\$ 228,942	
LIMITS FROM SP 147 (GENTRY) AT GLENWOOD BVD, S						REVISION DATE: 07/2010		
LIMITS TO: SH 64 (W ERWIN) IN TYLER						MPO PROJ NUM: SM-47		
PROJECT SEAL COAT & PAVEMENT MARKINGS						FUNDING CAT(S): 1		
DESCR:					PROJECT HISTORY: SEAL COAT & PAVEMENT MARKINGS			
REMARKS								
P7:								
TOTAL PROJECT COST INFORMATION					AUTHORIZED FUNDING BY CATEGORY/SHARE			
PRELIM ENG: \$ 10,206		COST OF APPROVED PHASES: \$ 228,942	FEDERAL STATE LOCAL LC TOTAL					
ROW PURCHASE: \$ (1-PRVNT	\$ 183,154	\$ 45,788	\$ (\$ (\$ 228,942*
CONST COST: \$ 208,318			TOTAL:	\$ 183,154	\$ 45,788	\$ (\$ (\$ 228,942
CONST ENG: \$ 10,416								
CONTING: \$ 13,541								
IND COSTS: \$ 12,916								
BND FINANCING: \$ (
TOTAL PRJ COST: \$ 255,398								

DISTRICT	COUNTY	CSJ	HWY	PHASE	CITY	PROJECT SPONSOR	YOE COST		
10 - TYLER	SMITH	0245-06-075	US 69	C,E	TYLER		\$ 60,007		
LIMITS FROM SH 64 (W ERWIN) IN TYLER, S						REVISION DATE: 07/2010			
LIMITS TO: SH 31 (FRONT ST)						MPO PROJ NUM: SM-47			
PROJECT SEAL COAT & PAVEMENT MARKINGS						FUNDING CAT(S): 1			
DESCR:					PROJECT HISTORY: SEAL COAT & PAVEMENT MARKINGS				
REMARKS									
P7:									
TOTAL PROJECT COST INFORMATION					AUTHORIZED FUNDING BY CATEGORY/SHARE				
PRELIM ENG: \$ 2,675		COST OF APPROVED PHASES: \$ 60,007	FEDERAL		STATE		LOCAL	LC	TOTAL
ROW PURCHASE: \$ (1-PRVNT	\$ 48,006	\$ 12,001	\$ (\$ (\$ 60,007*	
CONST COST: \$ 54,601			TOTAL:	\$ 48,006	\$ 12,001	\$ (\$ (\$ 60,007	
CONST ENG: \$ 2,730									
CONTING: \$ 3,545									
IND COSTS: \$ 3,385									
BND FINANCING: \$ (
TOTAL PRJ COST: \$ 66,941									

DISTRICT	COUNTY	CSJ	HWY	PHASE	CITY	PROJECT SPONSOR	YOE COST	
10 - TYLER	SMITH	0495-04-060	IH 20	C,E	TYLER		\$ 41,416	
LIMITS FROM AT SH 110 INTERCHANGE						REVISION DATE: 07/2010		
LIMITS TO:						MPO PROJ NUM: SM-47		
PROJECT SEAL COAT & PAVEMENT MARKINGS						FUNDING CAT(S): 1		
DESCR:						PROJECT HISTORY: SEAL COAT & PAVEMENT MARKINGS		
REMARKS								
P7:								
TOTAL PROJECT COST INFORMATION			AUTHORIZED FUNDING BY CATEGORY/SHARE					
PRELIM ENG:	\$ 1,847	COST OF APPROVED PHASES:		FEDERAL	STATE	LOCAL	LC	TOTAL
ROW PURCHASE:	\$ (1-PRVNT	\$ 37,274	\$ 4,142	\$ (\$ (\$ 41,416*
CONST COST:	\$ 37,685		TOTAL:	\$ 37,274	\$ 4,142	\$ (\$ (\$ 41,416
CONST ENG:	\$ 1,884							
CONTING:	\$ 2,450							
IND COSTS:	\$ 2,337							
BND FINANCING:	\$ (
TOTAL PRJ COST:	\$ 46,202							

PHASE: C = CONSTRUCTION, E = ENGINEERING, R = ROW, T = TRANSFER

* FUNDING NOT FIXED

STATEWIDE TRANSPORTATION IMPROVEMENT PROGRAM

TIP FY 2011-2014
GROUPED PROJECTS

TYLER METROPOLITAN PLANNING ORGANIZATION
FY 2011

DISTRICT	COUNTY	CSJ	HWY	PHASE	CITY	PROJECT SPONSOR	YOY COST	
10 - TYLER	SMITH	0505-02-039	SH 110	C,E	TYLER		\$ 372,475	
LIMITS FROM 2.0 MI N OF FM 3271 (PRAIRIE CRK)						REVISION DATE: 07/2010		
LIMITS TO: LP 323 IN TYLER						MPO PROJ NUM: SM-47		
PROJECT SEAL COAT & PAVEMENT MARKINGS						FUNDING CAT(S): 1		
DESCR:					PROJECT HISTORY: SEAL COAT & PAVEMENT MARKINGS			
REMARKS								
P7:								
TOTAL PROJECT COST INFORMATION					AUTHORIZED FUNDING BY CATEGORY/SHARE			
PRELIM ENG: \$ 16,607		COST OF APPROVED PHASES: \$ 372,475	FEDERAL STATE LOCAL LC TOTAL					
ROW PURCHASE: \$ (1-PRVNT	\$ 297,980	\$ 74,495	\$ (\$ (\$ 372,475*
CONST COST: \$ 338,921			TOTAL:	\$ 297,980	\$ 74,495	\$ (\$ (\$ 372,475
CONST ENG: \$ 16,946								
CONTING: \$ 22,030								
IND COSTS: \$ 21,013								
BND FINANCING: \$ (
TOTAL PRJ COST: \$ 415,518								

DISTRICT	COUNTY	CSJ	HWY	PHASE	CITY	PROJECT SPONSOR	YOY COST					
10 - TYLER	SMITH	0191-01-078	US 69	C,E	TYLER		\$ 142,751					
LIMITS FROM 0.125 MI N OF SL 323(SHELLEY DR), S						REVISION DATE: 07/2010						
LIMITS TO: SL 323 IN TYLER						MPO PROJ NUM: SNM-43						
PROJECT WIDEN FOR NORTHBOUND THROUGH LANE						FUNDING CAT(S): 8						
DESCR:					PROJECT HISTORY: WIDEN FOR NORTHBOUND ACCELERATION LANE							
REMARKS												
P7:												
TOTAL PROJECT COST INFORMATION			AUTHORIZED FUNDING BY CATEGORY/SHARE									
PRELIM ENG: \$ 6,223			COST OF APPROVED PHASES: \$ 142,751	FEDERAL		STATE		LOCAL		LC		TOTAL
ROW PURCHASE: \$ 0				8-SAFETY: \$ 128,476		\$ 14,275		\$ 0		\$ 0		142,751*
CONST COST: \$ 127,003				TOTAL: \$ 128,476		\$ 14,275		\$ 0		\$ 0		142,751
CONST ENG: \$ 9,525												
CONTING: \$ 8,890												
IND COSTS: \$ 7,874												
BND FINANCING: \$ 0												
TOTAL PRJ COST: \$ 159,515												

DISTRICT	COUNTY	CSJ	HWY	PHASE	CITY	PROJECT SPONSOR	YOY COST						
10 - TYLER	SMITH	2075-02-059	LP 323	C,E	TYLER		\$ 1,315,080						
LIMITS FROM SH 155(S) IN TYLER, W						REVISION DATE: 07/2010							
LIMITS TO: US 69 (S)						MPO PROJ NUM: SM-47							
PROJECT RESURFACE ROADWAY USING NOVA CHIP METHOD						FUNDING CAT(S): 1							
DESCR:					PROJECT HISTORY: SEAL COAT & PAVEMENT MARKINGS								
REMARKS													
P7:													
TOTAL PROJECT COST INFORMATION			AUTHORIZED FUNDING BY CATEGORY/SHARE										
PRELIM ENG: \$ 57,330			COST OF APPROVED PHASES: \$ 1,315,080	FEDERAL		STATE		LOCAL		LC		TOTAL	
ROW PURCHASE: \$				1-PRVNT \$ 1,052,064		\$ 263,016		\$		\$		\$ 1,315,080*	
CONST COST: \$ 1,170,000				TOTAL: \$ 1,052,064		\$ 263,016		\$		\$		\$ 1,315,080	
CONST ENG: \$ 87,750													
CONTING: \$ 81,900													
IND COSTS: \$ 72,540													
BND FINANCING: \$													
TOTAL PRJ COST: \$ 1,469,520													

PHASE: C = CONSTRUCTION, E = ENGINEERING, R = ROW, T = TRANSFER

* FUNDING NOT FIXED

TIP FY 2011-2014
GROUPED PROJECTS
TYLER METROPOLITAN PLANNING ORGANIZATION
FY 2011

DISTRICT	COUNTY	CSJ	HWY	PHASE	CITY	PROJECT SPONSOR	YOY COST
10 - TYLER	SMITH	0191-01-079	US 69	C,E	TYLER		\$ 153,995

LIMITS FROM AT SH 64(4TH & 5TH ST ONE-WAY PAIR)

REVISION DATE: 07/2010

LIMITS TO: IN TYLER

MPO PROJ NUM: SNM-43

PROJECT UPGRADE TRAFFIC SIGNALS

FUNDING CAT(S): 8

DESCR:

REMARKS

P7:

PROJECT HISTORY: UPGRADE TRAFFIC SIGNALS

TOTAL PROJECT COST INFORMATION			AUTHORIZED FUNDING BY CATEGORY/SHARE					
			FEDERAL	STATE	LOCAL	LC	TOTAL	
PRELIM ENG:	\$ 6,711	COST OF APPROVED PHASES: \$ 153,995	8-SAFETY:	\$ 138,596	\$ 15,400	\$ 0	\$ 153,995*	
ROW PURCHASE:	\$ 0		TOTAL:	\$ 138,596	\$ 15,400	\$ 0	\$ 153,995	
CONST COST:	\$ 137,000							
CONST ENG:	\$ 10,275							
CONTING:	\$ 9,590							
IND COSTS:	\$ 8,494							
BND FINANCING:	\$ 0							
TOTAL PRJ COST:	\$ 172,080							

DISTRICT	COUNTY	CSJ	HWY	PHASE	CITY	PROJECT SPONSOR	YOY COST
10 - TYLER	SMITH	0492-04-031	FM 756	C,E	TYLER		\$ 117,352

LIMITS FROM PALUXY DR AT SL 323

REVISION DATE: 07/2010

LIMITS TO: IN TYLER

MPO PROJ NUM: SNM-43

PROJECT INTERCONNECT TRAFFIC SIGNAL WITH REST OF SYSTEM

FUNDING CAT(S): 8

DESCR:

REMARKS

P7:

PROJECT HISTORY: INTERCONNECT TRAFFIC SIGNAL WITH REST OF SYSTEM

TOTAL PROJECT COST INFORMATION			AUTHORIZED FUNDING BY CATEGORY/SHARE					
			FEDERAL	STATE	LOCAL	LC	TOTAL	
PRELIM ENG:	\$ 5,116	COST OF APPROVED PHASES: \$ 117,352	8-SAFETY:	\$ 105,617	\$ 11,735	\$ 0	\$ 117,352*	
ROW PURCHASE:	\$ 0		TOTAL:	\$ 105,617	\$ 11,735	\$ 0	\$ 117,352	
CONST COST:	\$ 104,400							
CONST ENG:	\$ 7,830							
CONTING:	\$ 7,300							
IND COSTS:	\$ 6,472							
BND FINANCING:	\$ 0							
TOTAL PRJ COST:	\$ 131,133							

DISTRICT	COUNTY	CSJ	HWY	PHASE	CITY	PROJECT SPONSOR	YOY COST
10 - TYLER	SMITH	0424-07-010	FM 2767	C,E	TYLER		\$ 183,797

LIMITS FROM 0.15 MI E OF FM 850, E

REVISION DATE: 07/2010

LIMITS TO: GREGG C/L

MPO PROJ NUM: SNM-43

PROJECT INSTALL MILLED CENTERLINE RUMBLE STRIPS

FUNDING CAT(S): 8

DESCR:

REMARKS

P7:

PROJECT HISTORY: INSTALL MILLED CENTERLINE RUMBLE STRIPS

TOTAL PROJECT COST INFORMATION			AUTHORIZED FUNDING BY CATEGORY/SHARE					
			FEDERAL	STATE	LOCAL	LC	TOTAL	
PRELIM ENG:	\$ 8,196	COST OF APPROVED PHASES: \$ 183,797	8-SAFETY:	\$ 165,417	\$ 18,380	\$ 0	\$ 183,797*	
ROW PURCHASE:	\$ 0		TOTAL:	\$ 165,417	\$ 18,380	\$ 0	\$ 183,797	
CONST COST:	\$ 167,240							
CONST ENG:	\$ 8,362							
CONTING:	\$ 10,871							
IND COSTS:	\$ 10,366							
BND FINANCING:	\$ 0							
TOTAL PRJ COST:	\$ 205,037							

PHASE: C = CONSTRUCTION, E = ENGINEERING, R = ROW, T = TRANSFER

* FUNDING NOT FIXED

STATEWIDE TRANSPORTATION IMPROVEMENT PROGRAM
TIP FY 2011-2014
GROUPED PROJECTS
TYLER METROPOLITAN PLANNING ORGANIZATION
FY 2011

DISTRICT	COUNTY	CSJ	HWY	PHASE	CITY	PROJECT SPONSOR	YOE COST
10 - TYLER	SMITH	0505-02-040	SH 110	C,E	TYLER		\$ 370,513
LIMITS FROM VAN ZANDT C/L, SE						REVISION DATE: 07/2010	
LIMITS TO: .9 MI NW OF SL323(NR CR46) IN TYLER						MPO PROJ NUM: SNM-43	
PROJECT INSTALL RAISED CENTERLINE RUMBLE STRIPS						FUNDING CAT(S): 8	
DESCR:					PROJECT HISTORY: INSTALL RAISED CENTERLINE RUMBLE STRIPS		
REMARKS							
P7:							
TOTAL PROJECT COST INFORMATION					AUTHORIZED FUNDING BY CATEGORY/SHARE		
PRELIM ENG: \$ 16,520		COST OF APPROVED PHASES: \$ 370,513	FEDERAL STATE LOCAL LC TOTAL				
ROW PURCHASE: \$ (8-SAFETY: \$ 333,462 \$ 37,051 \$ (\$ (\$ 370,513*				
CONST COST: \$ 337,137			TOTAL: \$ 333,462 \$ 37,051 \$ (\$ (\$ 370,513				
CONST ENG: \$ 16,857							
CONTING: \$ 21,914							
IND COSTS: \$ 20,902							
BND FINANCING: \$ (
TOTAL PRJ COST: \$ 413,330							

DISTRICT	COUNTY	CSJ	HWY	PHASE	CITY	PROJECT SPONSOR	YOE COST		
10 - TYLER	SMITH	1934-02-003	FM 2015	C,E	OTHER		\$ 1,788,632		
LIMITS FROM 1.4 MI N OF IH20(SAND FLAT/CR313),S						REVISION DATE: 07/2010			
LIMITS TO: 0.5 MI N OF US 271 (CR 328)						MPO PROJ NUM: SNM-43			
PROJECT PROVIDE ADDITIONAL PAVED SURFACE WIDTH						FUNDING CAT(S): 8			
DESCR:					PROJECT HISTORY: PROVIDE ADDITIONAL PAVED SURFACE WIDTH				
REMARKS									
P7:									
TOTAL PROJECT COST INFORMATION			AUTHORIZED FUNDING BY CATEGORY/SHARE						
PRELIM ENG: \$ 79,748		COST OF APPROVED PHASES: \$ 1,788,632	FEDERAL		STATE		LOCAL	LC	TOTAL
ROW PURCHASE: \$ (8-SAFETY: \$ 1,609,769		\$ 178,863		\$ (\$ (\$ 1,788,632*
CONST COST: \$ 1,627,508			TOTAL: \$ 1,609,769		\$ 178,863		\$ (\$ (\$ 1,788,632
CONST ENG: \$ 81,375									
CONTING: \$ 105,788									
IND COSTS: \$ 100,906									
BND FINANCING: \$ (
TOTAL PRJ COST: \$ 1,995,325									

PHASE: C = CONSTRUCTION, E = ENGINEERING, R = ROW, T = TRANSFER

* FUNDING NOT FIXED

STATEWIDE TRANSPORTATION IMPROVEMENT PROGRAM

TIP FY 2011-2014
GROUPED PROJECTS
TYLER METROPOLITAN PLANNING ORGANIZATION
FY 2012

DISTRICT	COUNTY	CSJ	HWY	PHASE	CITY	PROJECT SPONSOR	YOE COST
10 - TYLER	SMITH	0492-04-032	FM 756	C,E	OTHER		\$ 679,924

LIMITS FROM SL 323 IN TYLER, S

REVISION DATE: 07/2010

LIMITS TO: FM 346

MPO PROJ NUM: SM-47

PROJECT SEAL COAT & PAVEMENT MARKINGS

FUNDING CAT(S): 1

DESCR:

REMARKS

P7:

PROJECT SEAL COAT & PAVEMENT MARKINGS
HISTORY:

TOTAL PROJECT COST INFORMATION			AUTHORIZED FUNDING BY CATEGORY/SHARE				
			FEDERAL	STATE	LOCAL	LC	TOTAL
PRELIM ENG:	\$ 30,315	COST OF APPROVED PHASES: \$ 679,924	1-PRVNT	\$ 543,939	\$ 135,985	\$ 0	\$ 679,924*
ROW PURCHASE:	\$ 0		TOTAL:	\$ 543,939	\$ 135,985	\$ 0	\$ 679,924
CONST COST:	\$ 618,675						
CONST ENG:	\$ 30,934						
CONTING:	\$ 40,214						
IND COSTS:	\$ 38,356						
BND FINANCING:	\$ 0						
TOTAL PRJ COST:	\$ 758,496						

DISTRICT	COUNTY	CSJ	HWY	PHASE	CITY	PROJECT SPONSOR	YOE COST
10 - TYLER	SMITH	0520-10-018	FM 3270	C,E	OTHER		\$ 30,906

LIMITS FROM SH 155 N OF TYLER, E

REVISION DATE: 07/2010

LIMITS TO: US 271

MPO PROJ NUM: SM-47

PROJECT SEAL COAT & PAVEMENT MARKINGS

FUNDING CAT(S): 1

DESCR:

REMARKS

P7:

PROJECT SEAL COAT & PAVEMENT MARKINGS
HISTORY:

TOTAL PROJECT COST INFORMATION			AUTHORIZED FUNDING BY CATEGORY/SHARE				
			FEDERAL	STATE	LOCAL	LC	TOTAL
PRELIM ENG:	\$ 1,378	COST OF APPROVED PHASES: \$ 30,906	1-PRVNT	\$ 24,725	\$ 6,181	\$ 0	\$ 30,906*
ROW PURCHASE:	\$ 0		TOTAL:	\$ 24,725	\$ 6,181	\$ 0	\$ 30,906
CONST COST:	\$ 28,122						
CONST ENG:	\$ 1,406						
CONTING:	\$ 1,828						
IND COSTS:	\$ 1,744						
BND FINANCING:	\$ 0						
TOTAL PRJ COST:	\$ 34,477						

DISTRICT	COUNTY	CSJ	HWY	PHASE	CITY	PROJECT SPONSOR	YOE COST
10 - TYLER	SMITH	3505-01-009	FM 3311	C,E	OTHER		\$ 92,717

LIMITS FROM SH 155, S

REVISION DATE: 07/2010

LIMITS TO: FM 3270, N OF TYLER

MPO PROJ NUM: SM-47

PROJECT SEAL COAT & PAVEMENT MARKINGS

FUNDING CAT(S): 1

DESCR:

REMARKS

P7:

PROJECT SEAL COAT & PAVEMENT MARKINGS
HISTORY:

TOTAL PROJECT COST INFORMATION			AUTHORIZED FUNDING BY CATEGORY/SHARE				
			FEDERAL	STATE	LOCAL	LC	TOTAL
PRELIM ENG:	\$ 4,134	COST OF APPROVED PHASES: \$ 92,717	1-PRVNT	\$ 74,174	\$ 18,543	\$ 0	\$ 92,717*
ROW PURCHASE:	\$ 0		TOTAL:	\$ 74,174	\$ 18,543	\$ 0	\$ 92,717
CONST COST:	\$ 84,365						
CONST ENG:	\$ 4,218						
CONTING:	\$ 5,484						
IND COSTS:	\$ 5,231						
BND FINANCING:	\$ 0						
TOTAL PRJ COST:	\$ 103,431						

PHASE: C = CONSTRUCTION, E = ENGINEERING, R = ROW, T = TRANSFER

* FUNDING NOT FIXED

STATEWIDE TRANSPORTATION IMPROVEMENT PROGRAM

TIP FY 2011-2014
GROUPED PROJECTS
TYLER METROPOLITAN PLANNING ORGANIZATION
FY 2012

DISTRICT	COUNTY	CSJ	HWY	PHASE	CITY	PROJECT SPONSOR	YOE COST	
10 - TYLER	SMITH	0495-04-062	IH 20	C,E	LINDALE		\$ 2,431,437	
LIMITS FROM VAN ZANDT C/L, E						REVISION DATE: 07/2010		
LIMITS TO: 0.8 MI E OF US 69 (END C-S)						MPO PROJ NUM: SM-47		
PROJECT PLANE & REPAVE ROADWAY FY 2012 IH MAINTENANCE PROGRAM						FUNDING CAT(S): 1		
DESCR:						PROJECT HISTORY: PLANE & REPAVE ROADWAY FY 2012 IH MAINTENANCE PROGRAM		
REMARKS								
P7:								
TOTAL PROJECT COST INFORMATION			AUTHORIZED FUNDING BY CATEGORY/SHARE					
PRELIM ENG:	\$ 105,997	COST OF APPROVED PHASES: \$ 2,431,437		FEDERAL	STATE	LOCAL	LC	TOTAL
ROW PURCHASE:	\$		1-PRVNT	\$ 2,188,293	\$ 243,144	\$	\$	\$ 2,431,437*
CONST COST:	\$ 2,163,200		TOTAL:	\$ 2,188,293	\$ 243,144	\$	\$	\$ 2,431,437
CONST ENG:	\$ 162,240							
CONTING:	\$ 151,424							
IND COSTS:	\$ 134,118							
BND FINANCING:	\$							
TOTAL PRJ COST: \$ 2,716,979								

DISTRICT	COUNTY	CSJ	HWY	PHASE	CITY	PROJECT SPONSOR	YOE COST			
10 - TYLER	SMITH	0522-04-028	FM 16	C,E	LINDALE		\$ 2,377,357			
LIMITS FROM SH 110, E						REVISION DATE: 07/2010				
LIMITS TO: SH 155						MPO PROJ NUM: SM-47				
PROJECT REPAIR & RESURFACE ROADWAY						FUNDING CAT(S): 1				
DESCR:					PROJECT HISTORY: REPAIR & RESURFACE ROADWAY					
REMARKS										
P7:										
TOTAL PROJECT COST INFORMATION			AUTHORIZED FUNDING BY CATEGORY/SHARE							
PRELIM ENG: \$ 105,997		COST OF APPROVED PHASES: \$ 2,377,357	FEDERAL		STATE		LOCAL		LC	TOTAL
ROW PURCHASE: \$			1-PRVNT	\$ 1,901,886	\$ 475,471	\$	\$	\$	2,377,357*	
CONST COST: \$ 2,163,200			TOTAL:	\$ 1,901,886	\$ 475,471	\$	\$	\$	2,377,357	
CONST ENG: \$ 108,160										
CONTING: \$ 140,608										
IND COSTS: \$ 134,118										
BND FINANCING: \$										
TOTAL PRJ COST: \$ 2,652,083										

DISTRICT	COUNTY	CSJ	HWY	PHASE	CITY	PROJECT SPONSOR	YOE COST				
10 - TYLER	SMITH	0522-04-029	FM 16	C,E	LINDALE		\$ 575,957				
LIMITS FROM SH 110, NR GARDEN VALLEY, E						REVISION DATE: 07/2010					
LIMITS TO: SH 155, IN WINONA						MPO PROJ NUM: SNM-43					
PROJECT INSTALL PROFILE MARKING CENTERLINE RUMBLE STRIPS						FUNDING CAT(S): 8					
DESCR:					PROJECT HISTORY: INSTALL RAISED CENTERLINE RUMBLE STRIPS						
REMARKS											
P7:											
TOTAL PROJECT COST INFORMATION			AUTHORIZED FUNDING BY CATEGORY/SHARE								
PRELIM ENG: \$ 25,680		COST OF APPROVED PHASES: \$ 575,957	FEDERAL		STATE		LOCAL		LC		TOTAL
ROW PURCHASE: \$ 0			8-SAFETY: \$ 518,361		\$ 57,596		\$ 0		\$ 0		\$ 575,957*
CONST COST: \$ 524,074			TOTAL: \$ 518,361		\$ 57,596		\$ 0		\$ 0		\$ 575,957
CONST ENG: \$ 26,204											
CONTING: \$ 34,065											
IND COSTS: \$ 32,493											
BND FINANCING: \$ 0											
TOTAL PRJ COST: \$ 642,515											

PHASE: C = CONSTRUCTION, E = ENGINEERING, R = ROW, T = TRANSFER

* FUNDING NOT FIXED

STATEWIDE TRANSPORTATION IMPROVEMENT PROGRAM

TIP FY 2011-2014

GROUPED PROJECTS

TYLER METROPOLITAN PLANNING ORGANIZATION

FY 2012

DISTRICT	COUNTY	CSJ	HWY	PHASE	CITY	PROJECT SPONSOR	YOE COST
10 - TYLER	SMITH	0522-04-030	FM 16	C,E	LINDALE		\$ 4,905,710
LIMITS FROM W OF FM 1253 AT GARDEN VALLEY, E						REVISION DATE: 07/2010	
LIMITS TO: 0.5 MI W OF SH 155 IN WINONA						MPO PROJ NUM: SNM-43	
PROJECT PROVIDE ADDITIONAL PAVED SURFACE WIDTH (SECTIONS)						FUNDING CAT(S): 8	
DESCR:					PROJECT HISTORY: PROVIDE ADDITIONAL PAVED SURFACE WIDTH (SECTIONS)		
REMARKS							
P7:							
TOTAL PROJECT COST INFORMATION					AUTHORIZED FUNDING BY CATEGORY/SHARE		
PRELIM ENG: \$ 218,726		COST OF APPROVED PHASES: \$ 4,905,710	FEDERAL STATE LOCAL LC TOTAL				
ROW PURCHASE: \$ (8-SAFETY: \$ 4,415,139 \$ 490,571 \$ (\$ 4,905,710*				
CONST COST: \$ 4,463,795			TOTAL: \$ 4,415,139 \$ 490,571 \$ (\$ 4,905,710				
CONST ENG: \$ 223,190							
CONTING: \$ 290,147							
IND COSTS: \$ 276,755							
BND FINANCING: \$ (
TOTAL PRJ COST: \$ 5,472,612							

DISTRICT	COUNTY	CSJ	HWY	PHASE	CITY	PROJECT SPONSOR	YOE COST		
10 - TYLER	SMITH	2075-02-061	LP 323	C,E	TYLER		\$ 3,566,035		
LIMITS FROM SH 155(S) IN TYLER, N						REVISION DATE: 07/2010			
LIMITS TO: 0.25 MI S OF SH 31 (BELLWOOD)						MPO PROJ NUM: SM-47			
PROJECT REPAIR AND RESURFACE ROADWAY						FUNDING CAT(S): 1			
DESCR:					PROJECT HISTORY: REPAIR AND RESURFACE ROADWAY				
REMARKS									
P7:									
TOTAL PROJECT COST INFORMATION			AUTHORIZED FUNDING BY CATEGORY/SHARE						
PRELIM ENG: \$ 158,995		COST OF APPROVED PHASES: \$ 3,566,035	FEDERAL		STATE		LOCAL	LC	TOTAL
ROW PURCHASE: \$ (1-PRVNT	\$ 2,852,828	\$ 713,207	\$ (\$ (\$ 3,566,035*	
CONST COST: \$ 3,244,800			TOTAL:	\$ 2,852,828	\$ 713,207	\$ (\$ (\$ 3,566,035	
CONST ENG: \$ 162,240									
CONTING: \$ 210,912									
IND COSTS: \$ 201,178									
BND FINANCING: \$ (
TOTAL PRJ COST: \$ 3,978,125									

DISTRICT	COUNTY	CSJ	HWY	PHASE	CITY	PROJECT SPONSOR	YOE COST			
10 - TYLER	SMITH	2833-01-011	SP 364	C,E	TYLER		\$ 1,485,848			
LIMITS FROM SH 31, SE						REVISION DATE: 07/2010				
LIMITS TO: SL 323 IN TYLER						MPO PROJ NUM: SM-47				
PROJECT PLANE & RESURFACE ROADWAY						FUNDING CAT(S): 1				
DESCR:					PROJECT HISTORY: PLANE & RESURFACE ROADWAY					
REMARKS										
P7:										
TOTAL PROJECT COST INFORMATION			AUTHORIZED FUNDING BY CATEGORY/SHARE							
PRELIM ENG: \$ 66,248		COST OF APPROVED PHASES: \$ 1,485,848	FEDERAL		STATE		LOCAL		LC	TOTAL
ROW PURCHASE: \$ (1-PRVNT	\$ 1,188,678	\$ 297,170	\$ (\$ (\$ 1,485,848*		
CONST COST: \$ 1,352,000			TOTAL:	\$ 1,188,678	\$ 297,170	\$ (\$ (\$ 1,485,848		
CONST ENG: \$ 67,600										
CONTING: \$ 87,880										
IND COSTS: \$ 83,824										
BND FINANCING: \$ (
TOTAL PRJ COST: \$ 1,657,552										

PHASE: C = CONSTRUCTION, E = ENGINEERING, R = ROW, T = TRANSFER

* FUNDING NOT FIXED

STATEWIDE TRANSPORTATION IMPROVEMENT PROGRAM

TIP FY 2011-2014

GROUPED PROJECTS

TYLER METROPOLITAN PLANNING ORGANIZATION

FY 2012

DISTRICT	COUNTY	CSJ	HWY	PHASE	CITY	PROJECT SPONSOR	YOE COST
10 - TYLER	SMITH	2833-01-012	SP 364	C,E	TYLER		\$ 411,417
LIMITS FROM 1.7 MI SE OF SH 31(GREENBRIAR), E						REVISION DATE: 07/2010	
LIMITS TO: 0.4 MI W OF SL 323 IN TYLER						MPO PROJ NUM: SNM-43	
PROJECT PROVIDE ADDITIONAL PAVED SURFACE WIDTH						FUNDING CAT(S): 8	
DESCR:					PROJECT PROVIDE ADDITIONAL PAVED SURFACE WIDTH		
REMARKS							
P7:							
TOTAL PROJECT COST INFORMATION					AUTHORIZED FUNDING BY CATEGORY/SHARE		
PRELIM ENG: \$ 18,343		COST OF APPROVED PHASES: \$ 411,417	FEDERAL STATE LOCAL LC TOTAL				
ROW PURCHASE: \$ (8-SAFETY: \$ 370,275 \$ 41,142 \$ (\$ (\$ 411,417*				
CONST COST: \$ 374,356			TOTAL: \$ 370,275 \$ 41,142 \$ (\$ (\$ 411,417				
CONST ENG: \$ 18,718							
CONTING: \$ 24,333							
IND COSTS: \$ 23,210							
BND FINANCING: \$ (
TOTAL PRJ COST: \$ 458,960							

DISTRICT	COUNTY	CSJ	HWY	PHASE	CITY	PROJECT SPONSOR	YOE COST	
10 - TYLER	SMITH	2956-01-006	FM 2908	C,E	OTHER		\$ 348,693	
LIMITS FROM 1.5 MI S OF US 271 (OLD LONGVIEW),S						REVISION DATE: 07/2010		
LIMITS TO: 2.7 MI N OF FM 2767 (CR 393)						MPO PROJ NUM: SNM-43		
PROJECT PROVIDE ADDITIONAL PAVED SURFACE WIDTH						FUNDING CAT(S): 8		
DESCR:						PROJECT HISTORY: PROVIDE ADDITIONAL PAVED SURFACE WIDTH		
REMARKS								
P7:								
TOTAL PROJECT COST INFORMATION			AUTHORIZED FUNDING BY CATEGORY/SHARE					
				FEDERAL	STATE	LOCAL	LC	TOTAL
PRELIM ENG: \$ 15,547			COST OF APPROVED PHASES: \$ 348,693	8-SAFETY:	\$ 313,824	\$ 34,869	\$ 0	\$ 348,693*
ROW PURCHASE: \$ 0				TOTAL:	\$ 313,824	\$ 34,869	\$ 0	\$ 348,693
CONST COST: \$ 317,282								
CONST ENG: \$ 15,864								
CONTING: \$ 20,623								
IND COSTS: \$ 19,671								
BND FINANCING: \$ 0								
TOTAL PRJ COST: \$ 388,988								

PHASE: C = CONSTRUCTION, E = ENGINEERING, R = ROW, T = TRANSFER

* FUNDING NOT FIXED

TIP FY 2011-2014
GROUPED PROJECTS
TYLER METROPOLITAN PLANNING ORGANIZATION
FY 2013

DISTRICT	COUNTY	CSJ	HWY	PHASE	CITY	PROJECT SPONSOR	YOY COST
10 - TYLER	SMITH	0889-03-009	FM 2868	C,E	OTHER		\$ 187,906

LIMITS FROM SH 155, E

LIMITS TO: FM 346 IN FLINT

PROJECT SEAL COAT & PAVEMENT MARKINGS

DESCR:

REMARKS

P7:

REVISION DATE: 07/2010

MPO PROJ NUM: SM-47

FUNDING CAT(S): 1

PROJECT SEAL COAT & PAVEMENT MARKINGS
HISTORY:

TOTAL PROJECT COST INFORMATION			AUTHORIZED FUNDING BY CATEGORY/SHARE					
			FEDERAL	STATE	LOCAL	LC	TOTAL	
PRELIM ENG:	\$ 8,376	COST OF APPROVED PHASES: \$ 187,906	1-PRVNT	\$ 150,325	\$ 37,581	\$ C	\$ C	\$ 187,906*
ROW PURCHASE:	\$ C		TOTAL:	\$ 150,325	\$ 37,581	\$ C	\$ C	\$ 187,906
CONST COST:	\$ 170,979							
CONST ENG:	\$ 8,546							
CONTING:	\$ 11,114							
IND COSTS:	\$ 10,601							
BND FINANCING:	\$ C							
TOTAL PRJ COST:	\$ 209,621							

DISTRICT	COUNTY	CSJ	HWY	PHASE	CITY	PROJECT SPONSOR	YOY COST
10 - TYLER	SMITH	1151-01-012	FM 848	C,E	WHITEHOUSE		\$ 341,198

LIMITS FROM SH 64 AT BASCOM, S

LIMITS TO: FM 346 IN WHITEHOUSE

PROJECT SEAL COAT & PAVEMENT MARKINGS

DESCR:

REMARKS

P7:

REVISION DATE: 07/2010

MPO PROJ NUM: SM-47

FUNDING CAT(S): 1

PROJECT SEAL COAT & PAVEMENT MARKINGS
HISTORY:

TOTAL PROJECT COST INFORMATION			AUTHORIZED FUNDING BY CATEGORY/SHARE					
			FEDERAL	STATE	LOCAL	LC	TOTAL	
PRELIM ENG:	\$ 15,213	COST OF APPROVED PHASES: \$ 341,198	1-PRVNT	\$ 272,958	\$ 68,240	\$ C	\$ C	\$ 341,198*
ROW PURCHASE:	\$ C		TOTAL:	\$ 272,958	\$ 68,240	\$ C	\$ C	\$ 341,198
CONST COST:	\$ 310,462							
CONST ENG:	\$ 15,523							
CONTING:	\$ 20,180							
IND COSTS:	\$ 19,245							
BND FINANCING:	\$ C							
TOTAL PRJ COST:	\$ 380,627							

DISTRICT	COUNTY	CSJ	HWY	PHASE	CITY	PROJECT SPONSOR	YOY COST
10 - TYLER	SMITH	1764-01-013	FM 346	C,E	OTHER		\$ 312,765

LIMITS FROM CHEROKEE C/L, NE

LIMITS TO: FM 2868 AT FLINT

PROJECT SEAL COAT & PAVEMENT MARKINGS

DESCR:

REMARKS

P7:

REVISION DATE: 07/2010

MPO PROJ NUM: SM-47

FUNDING CAT(S): 1

PROJECT SEAL COAT & PAVEMENT MARKINGS
HISTORY:

TOTAL PROJECT COST INFORMATION			AUTHORIZED FUNDING BY CATEGORY/SHARE					
			FEDERAL	STATE	LOCAL	LC	TOTAL	
PRELIM ENG:	\$ 13,945	COST OF APPROVED PHASES: \$ 312,765	1-PRVNT	\$ 250,212	\$ 62,553	\$ C	\$ C	\$ 312,765*
ROW PURCHASE:	\$ C		TOTAL:	\$ 250,212	\$ 62,553	\$ C	\$ C	\$ 312,765
CONST COST:	\$ 284,591							
CONST ENG:	\$ 14,230							
CONTING:	\$ 18,499							
IND COSTS:	\$ 17,645							
BND FINANCING:	\$ C							
TOTAL PRJ COST:	\$ 348,908							

PHASE: C = CONSTRUCTION, E = ENGINEERING, R = ROW, T = TRANSFER

* FUNDING NOT FIXED

TIP FY 2011-2014
GROUPED PROJECTS
TYLER METROPOLITAN PLANNING ORGANIZATION
FY 2013

DISTRICT	COUNTY	CSJ	HWY	PHASE	CITY	PROJECT SPONSOR	YOE COST
10 - TYLER	SMITH	0910-16-103	CR	C,E	OTHER		\$ 543,669
LIMITS FROM CR 132 AT HENSHAW CREEK						REVISION DATE: 07/2010	
LIMITS TO: STR #AA02-83-001						MPO PROJ NUM: SM-48	
PROJECT REPLACE BRIDGE AND APPROACHES						FUNDING CAT(S): 6	
DESCR:						PROJECT HISTORY: REPLACE BRIDGE AND APPROACHES	
REMARKS							
P7:							

TOTAL PROJECT COST INFORMATION			AUTHORIZED FUNDING BY CATEGORY/SHARE					
			FEDERAL	STATE	LOCAL	LC	TOTAL	
PRELIM ENG:	\$ 23,701	COST OF APPROVED PHASES: \$ 543,669	6-STRUCT RHB:	\$ 434,935	\$ 108,734	\$ C	\$ C	\$ 543,669*
ROW PURCHASE:	\$ C		TOTAL:	\$ 434,935	\$ 108,734	\$ C	\$ C	\$ 543,669
CONST COST:	\$ 483,692							
CONST ENG:	\$ 36,277							
CONTING:	\$ 33,856							
IND COSTS:	\$ 29,985							
BND FINANCING:	\$ C							
TOTAL PRJ COST:	\$ 607,517							

DISTRICT	COUNTY	CSJ	HWY	PHASE	CITY	PROJECT SPONSOR	YOE COST
10 - TYLER	SMITH	1790-02-037	LP 323	C,E	TYLER		\$ 2,719,696
LIMITS FROM 0.5 MI E OF US 271(AMER LEG RD), S						REVISION DATE: 07/2010	
LIMITS TO: .25 MI N OF FM2767(COMMERCE)IN TYLR						MPO PROJ NUM: SM-47	
PROJECT RESURFACE ROADWAY						FUNDING CAT(S): 1	
DESCR:						PROJECT HISTORY: RESURFACE ROADWAY	
REMARKS							
P7:							

TOTAL PROJECT COST INFORMATION			AUTHORIZED FUNDING BY CATEGORY/SHARE					
			FEDERAL	STATE	LOCAL	LC	TOTAL	
PRELIM ENG:	\$ 121,260	COST OF APPROVED PHASES: \$ 2,719,696	1-PRVNT	\$ 2,175,757	\$ 543,939	\$ C	\$ C	\$ 2,719,696*
ROW PURCHASE:	\$ C		TOTAL:	\$ 2,175,757	\$ 543,939	\$ C	\$ C	\$ 2,719,696
CONST COST:	\$ 2,474,701							
CONST ENG:	\$ 123,735							
CONTING:	\$ 160,856							
IND COSTS:	\$ 153,431							
BND FINANCING:	\$ C							
TOTAL PRJ COST:	\$ 3,033,983							

DISTRICT	COUNTY	CSJ	HWY	PHASE	CITY	PROJECT SPONSOR	YOE COST
10 - TYLER	SMITH	2075-01-053	LP 323	C,E	TYLER		\$ 4,944,902
LIMITS FROM US 69 (N) IN TYLER, E						REVISION DATE: 07/2010	
LIMITS TO: LP323, 5 MI E OF US271(AMER LEG RD)						MPO PROJ NUM: SM-47	
PROJECT RESURFACE ROADWAY						FUNDING CAT(S): 1	
DESCR:						PROJECT HISTORY: RESURFACE ROADWAY	
REMARKS							
P7:							

TOTAL PROJECT COST INFORMATION			AUTHORIZED FUNDING BY CATEGORY/SHARE					
			FEDERAL	STATE	LOCAL	LC	TOTAL	
PRELIM ENG:	\$ 220,473	COST OF APPROVED PHASES: \$ 4,944,902	1-PRVNT	\$ 3,955,922	\$ 988,980	\$ C	\$ C	\$ 4,944,902*
ROW PURCHASE:	\$ C		TOTAL:	\$ 3,955,922	\$ 988,980	\$ C	\$ C	\$ 4,944,902
CONST COST:	\$ 4,499,456							
CONST ENG:	\$ 224,973							
CONTING:	\$ 292,465							
IND COSTS:	\$ 278,966							
BND FINANCING:	\$ C							
TOTAL PRJ COST:	\$ 5,516,333							

PHASE: C = CONSTRUCTION, E = ENGINEERING, R = ROW, T = TRANSFER

* FUNDING NOT FIXED

STATEWIDE TRANSPORTATION IMPROVEMENT PROGRAM
TIP FY 2011-2014
GROUPED PROJECTS
TYLER METROPOLITAN PLANNING ORGANIZATION
FY 2013

DISTRICT	COUNTY	CSJ	HWY	PHASE	CITY	PROJECT SPONSOR	YOE COST	
10 - TYLER	SMITH	0424-01-045	SH 31	C,E	OTHER		\$ 5,563,015	
LIMITS FROM FM 850, E OF TYLER, E						REVISION DATE: 07/2010		
LIMITS TO: 0.9 MI W OF FM 2767 (GREGG C/L)						MPO PROJ NUM: SM-47		
PROJECT WIDEN 2 LN ROADWAY TO SUPER-2 (3 LANE) CRITERIA						FUNDING CAT(S): 1		
DESCR:						PROJECT WIDEN 2 LN ROADWAY TO SUPER-2 (3 LANE) CRITERIA		
REMARKS						PROJECT HISTORY:		
P7:								
TOTAL PROJECT COST INFORMATION			AUTHORIZED FUNDING BY CATEGORY/SHARE					
				FEDERAL	STATE	LOCAL	LC	TOTAL
PRELIM ENG: \$ 248,033			COST OF	1-PRVNT	\$ 4,450,412	\$ 1,112,603	\$	\$ 5,563,015*
ROW PURCHASE: \$			APPROVED	TOTAL:	\$ 4,450,412	\$ 1,112,603	\$	\$ 5,563,015
CONST COST: \$ 5,061,888			PHASES:					
CONST ENG: \$ 253,094			\$ 5,563,015					
CONTING: \$ 329,023								
IND COSTS: \$ 313,837								
BND FINANCING: \$								
TOTAL PRJ COST: \$ 6,205,875								

PHASE: C = CONSTRUCTION, E = ENGINEERING, R = ROW, T = TRANSFER

* FUNDING NOT FIXED

TIP FY 2011-2014
GROUPED PROJECTS
TYLER METROPOLITAN PLANNING ORGANIZATION
FY 2014

DISTRICT	COUNTY	CSJ	HWY	PHASE	CITY	PROJECT SPONSOR	YOY COST
10 - TYLER	SMITH	0345-02-052	SH 110	C,E	WHITEHOUSE		\$ 709,692

LIMITS FROM 0.6 MI S OF FM346(HAGAN)IN WHTHSE,S

REVISION DATE: 07/2010

LIMITS TO: SH 135 IN TROUP

MPO PROJ NUM: SM-47

PROJECT SEAL COAT & PAVEMENT MARKINGS

FUNDING CAT(S): 1

DESCR:

REMARKS

P7:

PROJECT SEAL COAT & PAVEMENT MARKINGS
HISTORY:

TOTAL PROJECT COST INFORMATION			AUTHORIZED FUNDING BY CATEGORY/SHARE					
				FEDERAL	STATE	LOCAL	LC	TOTAL
PRELIM ENG:	\$ 31,642	COST OF APPROVED PHASES: \$ 709,692	1-PRVNT	\$ 567,754	\$ 141,938	\$ C	\$ C	\$ 709,692*
ROW PURCHASE:	\$ C		TOTAL:	\$ 567,754	\$ 141,938	\$ C	\$ C	\$ 709,692
CONST COST:	\$ 645,762							
CONST ENG:	\$ 32,288							
CONTING:	\$ 41,975							
IND COSTS:	\$ 40,037							
BND FINANCING:	\$ C							
TOTAL PRJ COST:	\$ 791,704							

DISTRICT	COUNTY	CSJ	HWY	PHASE	CITY	PROJECT SPONSOR	YOY COST
10 - TYLER	SMITH	0424-01-047	SH 31	C,E	OTHER		\$ 813,832

LIMITS FROM FM 850 E OF TYLER, E

REVISION DATE: 07/2010

LIMITS TO: GREGG C/L

MPO PROJ NUM: SM-47

PROJECT SEAL COAT & PAVEMENT MARKINGS

FUNDING CAT(S): 1

DESCR:

REMARKS

P7:

PROJECT SEAL COAT & PAVEMENT MARKINGS
HISTORY:

TOTAL PROJECT COST INFORMATION			AUTHORIZED FUNDING BY CATEGORY/SHARE					
				FEDERAL	STATE	LOCAL	LC	TOTAL
PRELIM ENG:	\$ 36,285	COST OF APPROVED PHASES: \$ 813,832	1-PRVNT	\$ 651,066	\$ 162,766	\$ C	\$ C	\$ 813,832*
ROW PURCHASE:	\$ C		TOTAL:	\$ 651,066	\$ 162,766	\$ C	\$ C	\$ 813,832
CONST COST:	\$ 740,520							
CONST ENG:	\$ 37,026							
CONTING:	\$ 48,134							
IND COSTS:	\$ 45,912							
BND FINANCING:	\$ C							
TOTAL PRJ COST:	\$ 907,878							

DISTRICT	COUNTY	CSJ	HWY	PHASE	CITY	PROJECT SPONSOR	YOY COST
10 - TYLER	SMITH	0245-06-076	SH 64	C,E	NEW CHAPEL HILL		\$ 4,371,291

LIMITS FROM FM 3226 SE OF CHAPEL HILL, SE

REVISION DATE: 07/2010

LIMITS TO: SH 135 NEAR ARP

MPO PROJ NUM:

PROJECT WIDEN 2 LN ROADWAY TO SUPER-2 (3 LANE) CRITERIA

FUNDING CAT(S): 1,11

DESCR:

REMARKS

P7:

PROJECT WIDEN 2 LN ROADWAY TO SUPER-2 (3 LANE) CRITERIA
HISTORY:

TOTAL PROJECT COST INFORMATION			AUTHORIZED FUNDING BY CATEGORY/SHARE					
				FEDERAL	STATE	LOCAL	LC	TOTAL
PRELIM ENG:	\$ 194,898	COST OF APPROVED PHASES: \$ 4,371,291	1-PRVNT	\$ 1,497,033	\$ 374,258	\$ C	\$ C	\$ 1,871,291*
ROW PURCHASE:	\$ C		11-DIST DISC:	\$ 2,000,000	\$ 500,000	\$ C	\$ C	\$ 2,500,000
CONST COST:	\$ 3,977,517		TOTAL:	\$ 3,497,033	\$ 874,258	\$ C	\$ C	\$ 4,371,291
CONST ENG:	\$ 198,876							
CONTING:	\$ 258,539							
IND COSTS:	\$ 246,606							
BND FINANCING:	\$ C							
TOTAL PRJ COST:	\$ 4,876,436							

PHASE: C = CONSTRUCTION, E = ENGINEERING, R = ROW, T = TRANSFER

* FUNDING NOT FIXED

STATEWIDE TRANSPORTATION IMPROVEMENT PROGRAM

TIP FY 2011-2014

GROUPED PROJECTS

TYLER METROPOLITAN PLANNING ORGANIZATION

FY 2014

DISTRICT	COUNTY	CSJ	HWY	PHASE	CITY	PROJECT SPONSOR	YOE COST	
10 - TYLER	SMITH	0495-05-047	IH 20	C,E	OTHER		\$ 2,629,841	
LIMITS FROM 0.8 MI E OF US 69(BEG C-S),E 8.5 MI						REVISION DATE: 07/2010		
LIMITS TO: FM 2015 (WBL)						MPO PROJ NUM: SM-47		
PROJECT PLANE & REPAVE ROADWAY (WBL) FY 2014 IH MAINTENANCE PROGRAM						FUNDING CAT(S): 1		
DESCR:						PROJECT HISTORY: PLANE & REPAVE ROADWAY (WBL) FY 2014 IH MAINTENANCE PROGRAM		
REMARKS								
P7:								
TOTAL PROJECT COST INFORMATION			AUTHORIZED FUNDING BY CATEGORY/SHARE					
				FEDERAL	STATE	LOCAL	LC	TOTAL
PRELIM ENG:	\$	114,646	COST OF APPROVED PHASES: \$ 2,629,841	1-PRVNT	\$ 2,366,857	\$ 262,984	\$	\$ 2,629,841*
ROW PURCHASE:	\$	(TOTAL:	\$ 2,366,857	\$ 262,984	\$	\$ 2,629,841
CONST COST:	\$	2,339,716						
CONST ENG:	\$	175,479						
CONTING:	\$	163,780						
IND COSTS:	\$	145,062						
BND FINANCING:	\$	(
TOTAL PRJ COST: \$ 2,938,683								

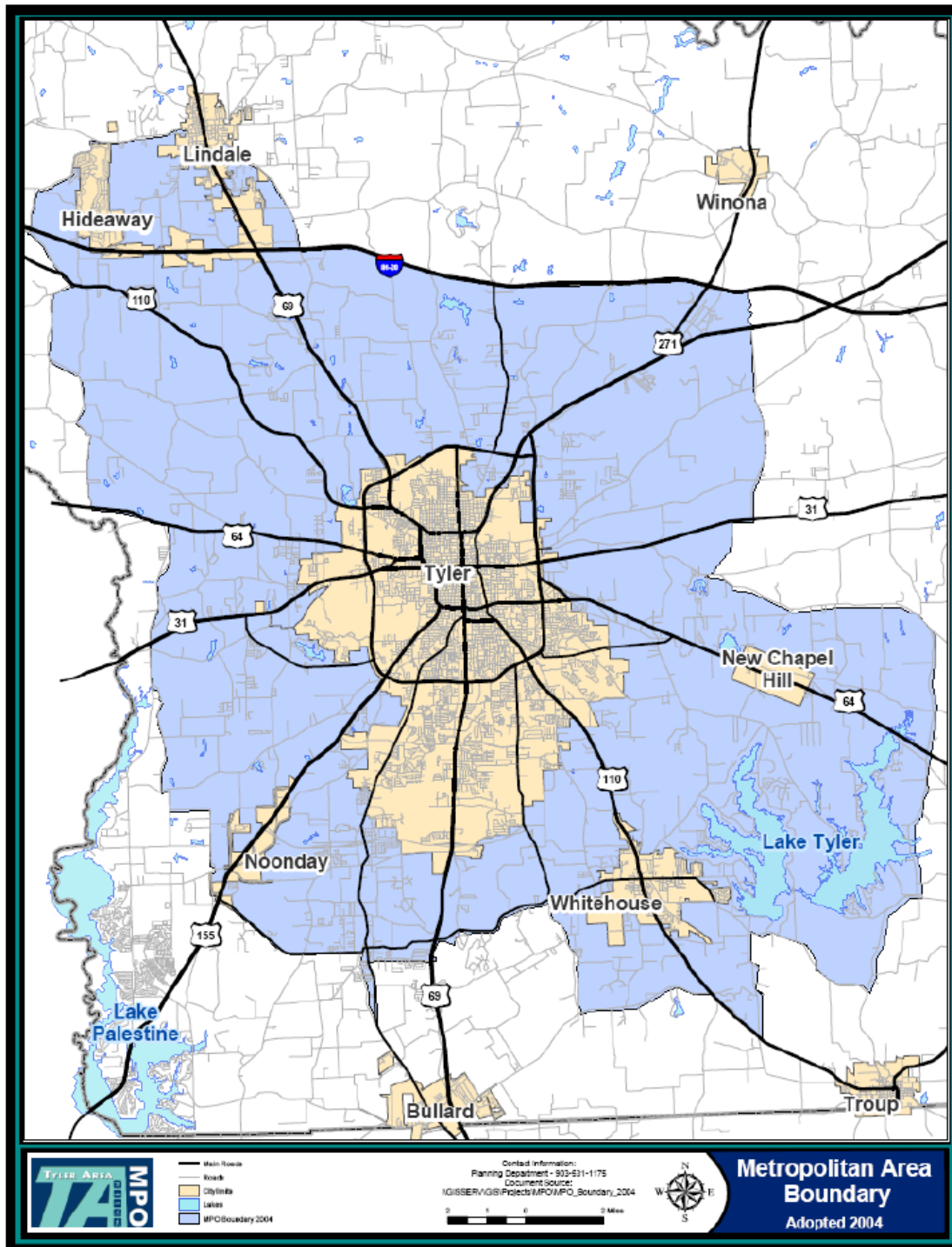
PHASE: C = CONSTRUCTION, E = ENGINEERING, R = ROW, T = TRANSFER

* FUNDING NOT FIXED

APPENDIX B

METROPOLITAN AREA BOUNDARY MAP

(GOVERNOR OR GOVERNOR'S DESIGNEE APPROVED)



Appendix C

Projects Undergoing Environmental Assessment

This Appendix contains projects that are scheduled for implementation beyond the four years of the Transportation Improvement Program time frame, and it in no way implies that these projects are programmed in the Transportation Improvement Program. Cost estimates are preliminary and do not represent any commitment of construction funding. Consistency with the Metropolitan Transportation Plan will be verified as alternatives are examined in studies or environmental clearance efforts. Projects listed in Appendix C will include, at a minimum, Control Section Job Number, county, Texas Department of Transportation district, sponsoring entity, street name, project limits, project description, estimated let date and preliminary project cost.

The purpose of Appendix C is to identify projects that are undergoing preliminary engineering and environmental analysis consistent with early project development. The Federal Highway Administration allows these projects to be referenced in the current Transportation Improvement Program in order to facilitate the feasibility and preliminary engineering and environmental analysis phases.

STATEWIDE TRANSPORTATION IMPROVEMENT PROGRAM
TIP FY 2012-2014
TYLER METROPOLITAN PLANNING ORGANIZATION
FY 2013

DISTRICT	COUNTY	CSJ	HWY	PHASE	CITY	PROJECT SPONSOR	YOE COST
10 - TYLER	SMITH	2075-02-900	LP 323	E			\$ 3,505
LIMITS FROM AT SS 248 (UNIVERSITY BLVD.)						REVISION DATE: 06/2012	
LIMITS TO: IN SE TYLER						MPO PROJ NUM:	
PROJECT FEASIBILITY STUDY TO IMPROVE SL 323 & SS 248 INTERSECTION						FUNDING CAT(S): 11	
DESCR:						PROJECT HISTORY: JUNE 2012 REVISION	
REMARKS							
P7:							
TOTAL PROJECT COST INFORMATION			AUTHORIZED FUNDING BY CATEGORY/SHARE				
PRELIM ENG:	\$ 1,754	COST OF APPROVED PHASES: \$ 3,505					
ROW PURCHASE:	\$		11-DIST DISC:	\$ 2,804	\$ 701	\$	3,505*
CONST COST:	\$ 35,805		TOTAL:	\$ 2,804	\$ 701	\$	3,505
CONST ENG:	\$ 1,751						
CONTING:	\$ 405						
IND COSTS:	\$ 2,524						
BND FINANCING:	\$						
TOTAL PRJ COST: \$ 43,725							

DISTRICT	COUNTY	CSJ	HWY	PHASE	CITY	PROJECT SPONSOR	YOE COST
10 - TYLER	SMITH	3021-01-900	FM 2964	E			\$ 9,514
LIMITS FROM SH110, 1.3 MI S OF LP323(SHILOH RD)S						REVISION DATE: 06/2012	
LIMITS TO: 0.3 MI S OF SH 110 (LIBBIE ST)						MPO PROJ NUM:	
PROJECT FEASIBILITY STUDY TO REALIGN ROADWAY &/OR IMPROVE INTERSECTM @ SH 110 IN RAPIDLY						FUNDING CAT(S): 11	
DESCR: DEVELOPING COMMERCIAL & RESIDENTIAL AREA						PROJECT HISTORY: JUNE 2012 REVISION	
REMARKS							
P7:							
TOTAL PROJECT COST INFORMATION			AUTHORIZED FUNDING BY CATEGORY/SHARE				
PRELIM ENG: \$ 4,762		COST OF APPROVED PHASES: \$ 9,514	FEDERAL STATE LOCAL LC TOTAL				
ROW PURCHASE: \$			11-DIST DISC: \$ 7,611	\$ 1,903	\$	\$	\$ 9,514*
CONST COST: \$ 97,188			TOTAL: \$ 7,611	\$ 1,903	\$	\$	\$ 9,514
CONST ENG: \$ 4,752							
CONTING: \$ 1,098							
IND COSTS: \$ 6,852							
BND FINANCING: \$							
TOTAL PRJ COST: \$ 118,693							

DISTRICT	COUNTY	CSJ	HWY	PHASE	CITY	PROJECT SPONSOR	YOE COST			
10 - TYLER	SMITH	2558-01-015	SP 248	E	TYLER		\$ 1,218,137			
LIMITS FROM 1.75 MI W OF FM 848(OLD OMEN RD), E						REVISION DATE: 06/2012				
LIMITS TO: SH 64 SE OF TYLER						MPO PROJ NUM:				
PROJECT WIDEN 2 LN ROAD TO 4 LANE DIVIDED ROADWAY W/FLUSH MEDIAN						FUNDING CAT(S): 1				
DESCR:					PROJECT HISTORY: WIDEN 2 LN ROAD TO 4 LANE DIVIDED ROADWAY W/FLUSH MEDIAN JUNE 2012 REVISION					
REMARKS										
P7:										
TOTAL PROJECT COST INFORMATION					AUTHORIZED FUNDING BY CATEGORY/SHARE					
PRELIM ENG:		\$ 605,362	COST OF APPROVED PHASES:	FEDERAL		STATE	LOCAL	LC	TOTAL	
ROW PURCHASE:		\$		1-PRVNT	\$ 974,510	\$ 243,627	\$	\$	\$	1,218,137*
CONST COST:		\$ 12,354,335		TOTAL:	\$ 974,510	\$ 243,627	\$	\$	\$	1,218,137
CONST ENG:		\$ 612,775								
CONTING:		\$ 245,851								
IND COSTS:		\$ 870,981								
BND FINANCING:		\$								
TOTAL PRJ COST:		\$ 15,151,357								

PHASE: C = CONSTRUCTION, E = ENGINEERING, R = ROW, T = TRANSFER

* FUNDING NOT FIXED

STATEWIDE TRANSPORTATION IMPROVEMENT PROGRAM
TIP FY 2012-2014
TYLER METROPOLITAN PLANNING ORGANIZATION
FY 2013

DISTRICT	COUNTY	CSJ	HWY	PHASE	CITY	PROJECT SPONSOR	YOE COST
10 - TYLER	SMITH	0191-03-081	FM 2493	E			\$ 1,343,458
LIMITS FROM FM 2813 IN GRESHAM, S						REVISION DATE: 06/2012	
LIMITS TO: FM 346 IN FLINT						MPO PROJ NUM:	
PROJECT WIDEN FROM 2 LANES TO 4 LANES WITH FLUSH MEDIAN						FUNDING CAT(S): 2U,11	
DESCR:							
REMARKS						PROJECT HISTORY: WIDEN FROM 2 LANES TO 4 LANES WITH FLUSH MEDIAN JUNE 2012	
P7:						REVISION	

TOTAL PROJECT COST INFORMATION			AUTHORIZED FUNDING BY CATEGORY/SHARE								
		COST OF APPROVED PHASES: \$ 1,343,458	FEDERAL		STATE		LOCAL		LC		TOTAL
PRELIM ENG: \$ 667,642											
ROW PURCHASE: \$ 3,640,000			2U-URBAN CRDR: \$ 11,008,000		\$ 2,752,000		\$ C		\$ C		\$ 13,760,000
CONST COST: \$ 13,625,337			TOTAL: \$ 11,008,000		\$ 2,752,000		\$ C		\$ C		\$ 13,760,000
CONST ENG: \$ 675,817											
CONTING: \$ 271,144											
IND COSTS: \$ 960,586											
BND FINANCING: \$ C											
TOTAL PRJ COST: \$ 20,350,114											

DISTRICT	COUNTY	CSJ	HWY	PHASE	CITY	PROJECT SPONSOR	YOE COST
10 - TYLER	SMITH	0191-01-063	US 69	E	TYLER		\$ 1,265,133
LIMITS FROM AT FM 346, E OF FLINT						REVISION DATE: 06/2012	
LIMITS TO:						MPO PROJ NUM: SM-27	
PROJECT CONSTRUCT GRADE-SEPARATED INTERCHANGE						FUNDING CAT(S): 1,12	
DESCR:							
REMARKS						PROJECT HISTORY: CONSTRUCT GRADE-SEPARATED INTERCHANGE JUNE 2012	
P7:						REVISION	

TOTAL PROJECT COST INFORMATION			AUTHORIZED FUNDING BY CATEGORY/SHARE											
PRELIM ENG:	\$	646,418	COST OF APPROVED PHASES: \$ 1,265,133		FEDERAL		STATE		LOCAL		LC		TOTAL	
ROW PURCHASE:	\$	0		12-STRAT PRIOR:	\$	4,000,000	\$	1,000,000	\$	0	\$	0	\$	5,000,000
CONST COST:	\$	13,192,210		TOTAL:	\$	4,000,000	\$	1,000,000	\$	0	\$	0	\$	5,000,000
CONST ENG:	\$	618,715												
CONTING:	\$	394,447												
IND COSTS:	\$	930,051												
BND FINANCING:	\$	0												
TOTAL PRJ COST: \$ 16,374,171														

PHASE: C = CONSTRUCTION, E = ENGINEERING, R = ROW, T = TRANSFER

* FUNDING NOT FIXED

STATEWIDE TRANSPORTATION IMPROVEMENT PROGRAM
TIP FY 2013-2016
TYLER METROPOLITAN PLANNING ORGANIZATION
FY 2014

DISTRICT	COUNTY	CSJ	HWY	PHASE	CITY	PROJECT SPONSOR	YOY COST
10 - TYLER	SMITH	0190-04-033	US 69	E	LINDALE		\$ 5,961,756
LIMITS FROM US 69, NORTH OF LINDALE, S						REVISION DATE: 07/2012	
LIMITS TO: IH 20 AT LP 49 (LP 49 EXTENSION)						MPO PROJ NUM: SM-30	
PROJECT CONSTRUCT 2-LNS CONTROLLED ACCESS TOLL ROAD ON NEW LOCATION AS EXTENSION OF						FUNDING CAT(S): 3-LC	
DESCR: LP 49 (ULTIMATE 4-LANE FACILITY) (TOLL)							
REMARKS APPROVED IN APPENDX C OF TIP; THIS PROJ ALSO LISTED IN 11-14						PROJECT HISTORY: CONSTRUCT 2-LNS CONTROLLED ACCESS TOLL ROAD ON NEW LOCATION AS EXTENSION OF LP 49 (ULTIMATE 4-LANE FACILITY) (TOLL), SEG 4 POSS FUNDING SOURCES: TOLL REVENUE BACKED BONDS, LOCAL LEVERAGE	
P7: STIP							
TOTAL PROJECT COST INFORMATION				AUTHORIZED FUNDING BY CATEGORY/SHARE			
PRELIM ENG:	\$ 3,084,752	COST OF APPROVED PHASES:					
ROW PURCHASE:	\$						
CONST COST:	\$ 62,954,128						
CONST ENG:	\$ 2,877,004						
CONTING:	\$ 5,212,602						
IND COSTS:	\$ 4,438,266						
BND FINANCING:	\$						
TOTAL PRJ COST:	\$ 82,268,454	\$ 5,961,756					
			FEDERAL	STATE	LOCAL	LC	TOTAL
3-LOCAL CONTR:			\$ C	\$ C	\$ C	\$ 5,961,756	\$ 5,961,756*
TOTAL:			\$ C	\$ C	\$ C	\$ 5,961,756	\$ 5,961,756

PHASE: C = CONSTRUCTION, E = ENGINEERING, R = ROW, T = TRANSFER

* FUNDING NOT FIXED