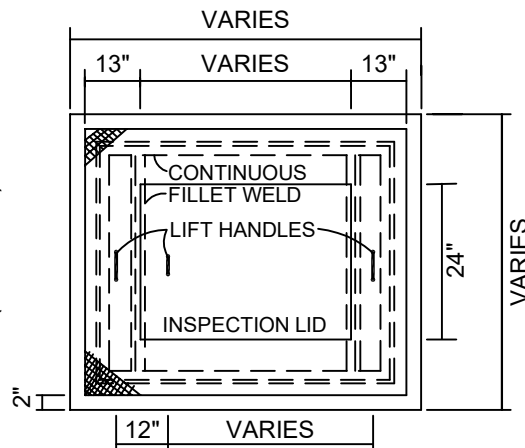
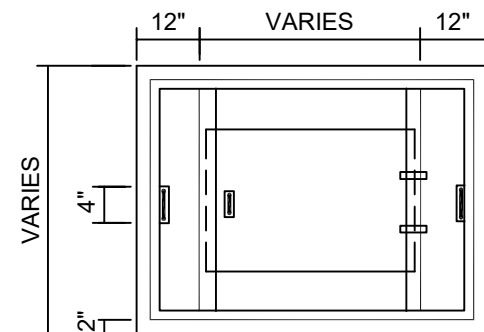


PROFILE VIEW



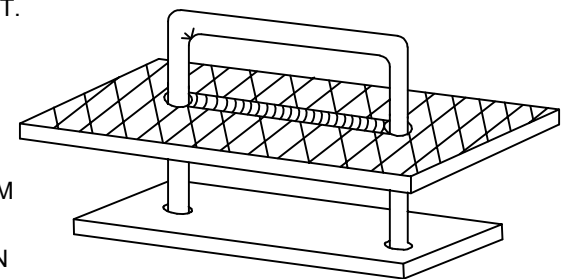
TOP VIEW (LID)



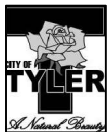
BOTTOM VIEW (LID)

NOTES:

1. SIZE OF VAULT WILL VARY ACCORDING TO METER SIZE AND DEPTH OF PIT.
2. VAULT TO BE CONSTRUCTED OF CLASS "A" CONCRETE REINFORCED WITH WITH # 3 BARS ON 12" CENTERS.
3. INSTALL 1-1/2" X 1-1/2" X 3/16" ANGLE IRON AROUND LID AND EACH END OF INSPECTION LID. ANGLE IRON TO BE WELDED TO PROTRUDE DOWN WALL OF BOX AROUND PERIMETER TO SECURE COVER FROM MOVEMENT.
4. LID TO BE CONSTRUCTED OF 1/4" DIAMOND STEEL, 300 PSF LOAD WEIGHT, SKID RESISTANT, RAISED DIAMOND PLATE AND PAINTED WITH RED PRIMER PAINT.
5. COUNTERSINK PIT 3/8" TO 1/2" FOR PLACEMENT OF LID.
6. OUTSIDE EDGES OF PIT TO BE CHAMFERED.
7. HINGES TO BE 4" X 4" STEEL, TIGHT PIN, REVERSIBLE BUTTS AND TO BE CONTINUOUS WELDED ON BOTTOM OF COVER.
8. NUMBER OF HINGES REQUIRED SHALL BE IN ACCORDANCE WITH CITY OF TYLER STANDARD SPECIFICATION FOR CONCRETE VAULTS.
9. INSPECTION LIFT HANDLE TO BE 3/8" IRON ROD WELDED TO 1/4" STEEL PLATE.
10. LID LIFT HANDLES (2 EACH) TO BE 3/8" IRON ROD WELDED TO 1/4" STEEL PLATE.
11. HANDLES SHALL BE PARTIALLY RECESSED BY BEVELING LID AS SHOWN.
12. SEE CONCRETE VAULT SPECIFICATION AND CONCRETE VAULT FIELD LINE DETAIL FOR INFORMATION ON REQUIRED SUMP DRAIN.
13. VAULT LID TO BE DRILLED WITH 1-7/8" HOLE. HOLE SHALL NOT BE DRILLED IN INSPECTION LID.



TYPICAL LIFT HANDLE



CITY OF TYLER
STANDARD DETAIL

**CAST IN PLACE CONCRETE
METER VAULT**

REVISION DATE:
MAY 14, 2021