



212 W. Ninth Street • Tyler, Texas 75701 • (903) 597-6606 • Fax (903) 597-0517

W. E. Winters Park – City of Tyler

Addendum #1

Friday, April 26, 2024

TO: ALL BID HOLDERS OF CONSTRUCTION DOCUMENTS & CONTRACT DOCUMENTS

Attached is an Addendum for all bid holders of construction documents and project manual regarding interpretations of, changes in, and additions to Contract Specifications for *W. E. Winters Park*.

1. A contractor signature sheet has been added to the bid form for unit pricing and addendum confirmation. Each bidder must sign these sheets confirming unit pricing and that they have received the addendum.
2. Remove tree demolition from bid list item #5. All tree removal will be done by The City of Tyler. Revised Bid Form has been attached to this addendum.
3. Total sod square footage is 6,764 SF, hydro-mulch square footage is 14,738 SF. See plan sheet L1 attached to this addendum. Line items #20 and #21 have updated quantities on the bid.
4. Add alternate: Disassemble the playground to be reused. Revised Bid Form has been attached to this addendum.
5. Date of completion will be 90 days from the notice to proceed. Replace Page 25 of 87 with the attached Page 25 of 87 in the City of Tyler – CIP Contract.
6. Note on demolition of removing rotten pavilion wood is to be removed, no work on pavilion is to be included. See plan sheet SP-1.
7. Removal of the water fountain will require contractor to cap line and place in valve box. Provide finish grade as per plans and specifications. See plan sheet SP-1.
8. Concrete PSI will be changed to 3600 PSI. See plan sheets P-1, CD-2, CD-3, and CD-4.

Bid Opening is on April 30th @ 2:00pm at City Hall in the Council Chambers.

END OF ADDENDUM

Bid Proposal

Client: City of Tyler
Project: W.E. Winters Park
Date: 4.26.2024
Sht. GN-1 to CD-5

The following bid items to include all labor, tools, equipment, superintendence, materials and any other requisite necessary to perform the work stated in accordance with the plans & specifications, complete and in place.

Item #	Quantity/Unit	Item Description & Written Price	Unit Price	Total
1	LS	Mobilize for the Project, including but not limited to project start-up and delivery of equipment _____ Dollars _____ Cents		
2	LS	General Conditions, including but not limited to project management, supervision and administration _____ Dollars _____ Cents		
3	LS	Site preparation, including but not limited to silt fencing, and tree protection, complete and in place per the plans and specifications _____ Dollars _____ Cents		
4	LS	Storm Water Pollution Prevention Plan and Erosion Control Elements, including but not limited to inlet protection, construction fencing, construction entrance and erosion silt fence _____ Dollars _____ Cents		
5	LS	Demolition items, including but not limited to the removal and disposal of existing sidewalk, border and gravel, water fountain, and benches. _____ Dollars _____ Cents		
6	LS	Demolition of playground equipment, including but not limited to the removal and disposal of all playground elements. _____ Dollars _____ Cents		
7	LS	Rough Site Grading, including but not limited to excavation and backfill _____ Dollars _____ Cents		
8	LS	Finish Site Grading, including but not limited to final grading for paving, concrete slabs, and other misc. areas _____ Dollars _____ Cents		

Item #	Quantity/Unit	Item Description & Written Price	Unit Price	Total
9	664 LF	6' Wide Concrete Trail (CD-2, Detail 6), including but not limited to excavation, subgrade preparation, reinforcing steel, concrete, saw joints, longitudinal butt joints, and expansion joints, complete and in place per the plans and specifications Dollars Cents		
10	82 LF	Playground Sidewalk Drop Ledge (CD-2, Detail 7), including but not limited to excavation, subgrade preparation, reinforcing steel, concrete, saw joints, longitudinal butt joints, and expansion joints, complete and in place per the plans and specifications Dollars Cents		
11	73 LF	Decomposed Granite Concrete Border (CD-3, Detail 8), including but not limited to excavation, subgrade preparation, reinforcing steel, concrete, saw joints, longitudinal butt joints, and expansion joints, complete and in place per the plans and specifications Dollars Cents		
12	102 LF	Concrete Playground Retaining Wall (CD-3, Detail 4), including but not limited to excavation, subgrade preparation, reinforcing steel, concrete, saw joints, longitudinal butt joints, and expansion joints, complete and in place per the plans and specifications Dollars Cents		
13	1,479 SF	4" Concrete Pavement, including but not limited to excavation, subgrade preparation, reinforcing steel, concrete, saw joints, longitudinal butt joints, and expansion joints, complete and in place per the plans and specifications Dollars Cents		
14	1 EA	Concrete ADA Playground Ramp (CD-3, Detail 1), including but not limited to excavation, subgrade preparation, reinforcing steel, concrete, saw joints, longitudinal butt joints, and expansion joints, complete and in place per the plans and specifications, complete and in place per the plans and specifications Dollars Cents		

Item #	Quantity/Unit	Item Description & Written Price	Unit Price	Total
15	778 SF	4" Crushed Decomposed Granite Paving (CD-3, Detail 2), including but not limited to excavation, subgrade preparation and compaction per plans and specifications, complete and in place per the plans and specifications, complete and in place per the plans and specifications Dollars Cents		
16	LS	Provide and Install NDS 12"x12" Catch Basin, 33.5 LF of 6" Courrugated Drain Pipe and 40 SF of River Rock with Steel Edging, including but not limited to excavation, subgrade preparation, gravel, filter fabric, and connections joints Dollars Cents		
17	LS	Provide and Install Playgroung Drainage with 49 LF of playground french drain (CD-4, Detail 4), 24 LF of 4" Perforated S&D pipe, associated aggregate infill and Concrete End Treatment (CD-4, Detail 5), including but not limited to excavation, subgrade preparation, reinforcing steel, concrete, gravel, filter fabric, and connections joints Dollars Cents		
18	1 EA	Concrete Sidewalk Cross Drain (CD-2, Detail 8-9) and 1 CY of 6" Rip Rap, including but not limited to excavation, subgrade preparation, reinforcing steel, concrete, saw joints, longitudinal butt joints, and expansion joints Dollars Cents		
19	2,047 SF	Subgrade preparation and installation of compacted aggregate for playground area, per plans and specifications (CD-3, Detail 3) Dollars Cents		
20	6,764 SF	Sodding of disturbed areas with Zosia sod, including but not limited to purchase, delivery, bed prep, planting and warranty in accordance with the plans and specifications Dollars Cents		

Item #	Quantity/Unit	Item Description & Written Price	Unit Price	Total
21	14,738 SF	Hydromulch of disturbed areas with Common Bermuda sod, including but not limited to purchase, delivery, bed prep, planting and warranty in accordance with the plans and specifications _____ Dollars _____ Cents		
22	3 EA	15-Gal Eastern Redbud, including but not limited to purchase, delivery, bed prep, planting and warranty in accordance with the plans and specifications _____ Dollars _____ Cents		
23	LS	Installation of City provided site furniture included but not limited to picnic tables, bench, and trash receptical, and any required concrete footings (CD-3, Detail 8) _____ Dollars _____ Cents		
24	AL	Materials Testing and Contingency Allowance \$27,800 Dollars _____ Cents	\$27,800.00	\$27,800.00
Total Base Bid		\$ _____ Dollars _____ Cents		

Add Alternate

1	LS	Diassemble the playground to for reuse. _____ Dollars _____ Cents		
Total Bid Alternate		\$ _____ Dollars _____ Cents		

Unit prices listed in the bid form will serve as the basis for any change or field orders issued during the course of the project. It is imperative that these unit prices accurately reflect the cost of materials, labor, and overhead. Any deviations from the bid form unit prices must be mutually agreed upon in writing by both parties prior to implementation. Contractors are advised to carefully review and verify all unit prices before submission, as they will be binding throughout the project duration

Name of Bidder: _____ Authorized Signature: _____
Printed Name: _____ Title _____ Date: _____



212 W. Ninth Street • Tyler, Texas 75701 • (903) 597-6606 • Fax (903) 597-0517

W. E. Winters Park – City of Tyler

Addendum Acknowledgement

I ACKNOWLEDGE RECEIPT OF THE FOLLOWING ADDENDUMS:

ADDENDUM NO. _____

DATED: _____

ADDENDUM NO. _____

DATED: _____

ADDENDUM NO. _____

DATED: _____

ADDENDUM NO. _____

DATED: _____

NAME OF BIDDER: _____

AUTHORIZED SIGNATURE: _____

PRINTED NAME: _____

TITLE: _____

DATE: _____

IT IS THE RESPONSIBILITY OF THE FIRM TO ENSURE THAT THEY HAVE RECEIVED ADDENDUMS ISSUED.

CONTACT CITY OF TYLER PRIOR TO SUBMITTING YOUR BID TO ENSURE THAT YOU HAVE RECEIVED ALL ADDENDUMS.

7.3 TIME OF COMMENCEMENT AND COMPLETION

CONTRACTOR hereby agrees to commence work within ten (10) calendar days after the date specified in the *Notice to Proceed*, to diligently pursue the work without extended interruption and to **complete in full** the same either:

- 1) ☐ within Enter amount using words (Enter amount using figure) Choose an item after the date specified in the written *Notice to Proceed*, or
 - 2) ☐ on or before the **mandatory completion** date of 90 days after NTP,
- subject to such extensions of time as are provided by the *General Conditions*.

7.4 CONTRACT PRICE

CITY agrees to pay to the **CONTRACTOR** the contract amount of _____ [insert figure using written words], (\$ _____) [insert numerical figure] such payments to be subject to the *General Conditions* of the contract.

7.5 BONDS

The **CONTRACTOR** is required, pursuant to TEX. GOV'T CODE ANN. § 2253.021, and/or this *Standard Form of Agreement* to execute all bonds before commencing the work. The contract shall not be in effect until **CONTRACTOR** executes the AGREEMENT and files with the **CITY** a good and sufficient *Statutory Performance and Maintenance Bond and Payment Bond* (when applicable) or *Payment Bond* on standard forms and in the amount equal to one hundred percent (100%) of the total amount of the contract. Such bonds are furnished by the **CONTRACTOR** and approved by the **CITY**.

A *Performance and Maintenance Bond and Payment Bond* shall be required for contract amounts in excess of one hundred thousand dollars (\$100,000).

Payment Bond shall be required for all projects regardless of value.

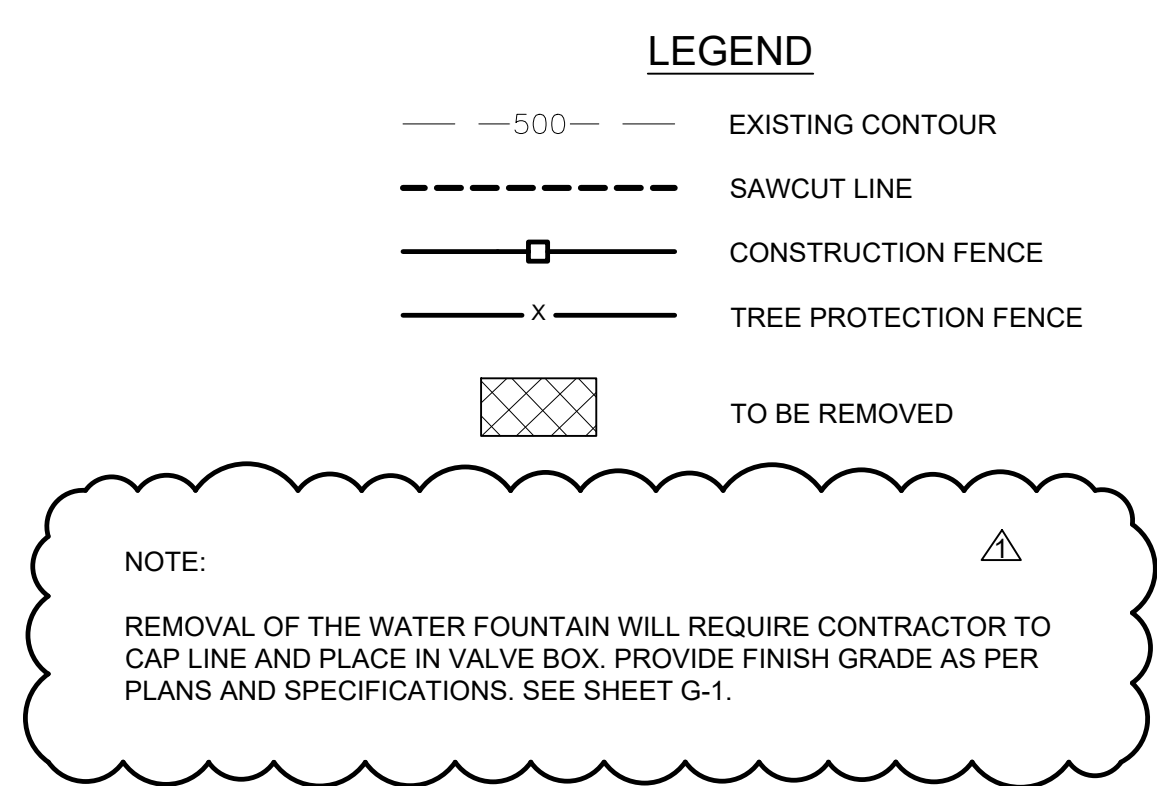
Within fifteen (15) calendar days after written notification of the award of the contract, the **CONTRACTOR** shall submit *Statutory Performance and Maintenance Bond and Payment Bond* (when applicable) or *Payment Bond* to **CITY** on standard forms as required by the AGREEMENT.

See Section 16.7, "Bonds" in the *General Conditions* for a description and explanation of the bonds required for this AGREEMENT.

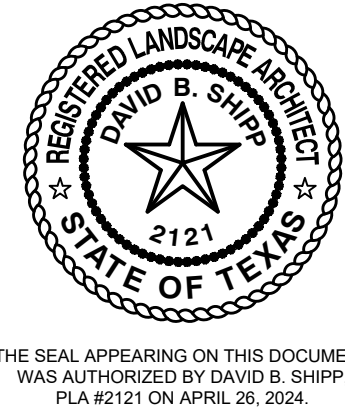
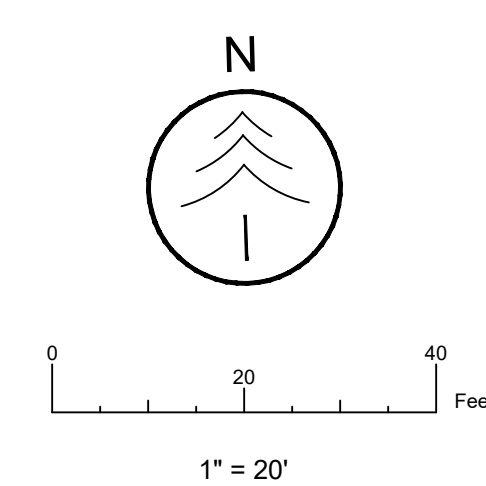
7.6 INSURANCE

CONTRACTOR agrees, at its sole expense, to maintain on a primary basis during the life of this Contract and the performance of Work hereunder, insurance coverages, limits, and endorsements. Insurance required by this AGREEMENT for the **CITY** as additional insured shall be primary insurance and not contributing with any other insurance available to **CITY**.

CONTRACTOR agrees to provide evidence of the required coverages at execution of contract. In the event the **CONTRACTOR** performs any site work, other than testing, then all the insurance required by AGREEMENT will need to be evidenced prior to commencement of said site work.



TREE TABLE		
Point	Size	Type
1	70"	Elm
2	26"	Elm
3	36"	Elm
4	30"	Elm
5	30"	Elm
6	(3) 24"	Elm
7	36"	Elm
8	14"	Sweet Gum
9	14"	Elm
10	16"	White Oak
11	8"	Burr Oak
12	24"	Twin Sweet Gum
13	24"	Twin Sweet Gum
14	32"	Sycamore
15	30"	Sweet Gum
16	14"	Live Oak
17	24"	Pecan
18	18"	Sycamore
19	34"	Elm
20	(3) 20"	Sweet Gum
21	15" 18" 28"	Elm
22	36"	Elm
23	12"	Pecan
24	15"	Pecan
25	8"	Elm
26	12"	Elm
27	24"	Pecan
28	30"	Elm
29	14"	Elm
30	15"	Sycamore
31	18"	Pecan
32	18"	Elm
33	18"	Pecan
34	15"	Elm
35	8"	Elm
36	14"	Sycamore
37	18"	Elm
38	14"	Water Oak
39	8"	Elm
40	22"	Twin Sweet Gum
41	12"	Water Oak
42	34"	Water Oak
43	15"	Red Oak
44	8"	Elm
45	20"	Water Oak
46	18" 26"	Twin Sweet Gum
47	10"	Pecan
48	24"	Elm
49	14"	Hickory
50	26"	Elm
51	16"	Elm
52	16"	Elm
53	14"	Pecan
54	30"	Elm
55	15"	Elm
56	24"	Water Oak
57	14"	Pecan
58	28"	Sweet Gum
59	12"	Pecan
60	15"	Pecan
61	14"	Pecan
62	12"	Pecan
63	12"	Pecan
64	20"	Pecan
65	12"	Elm
66	16"	Twin Elm



W.E. WINTERS PARK
17560 FM 2493
TYLER, TEXAS 75790

Drawn: TMG
Checked: DBS

Revision History

Job Number: 22-062
Date: 4/26/2024

SITE PREPARATION & DEMOLITION PLAN

SP-1

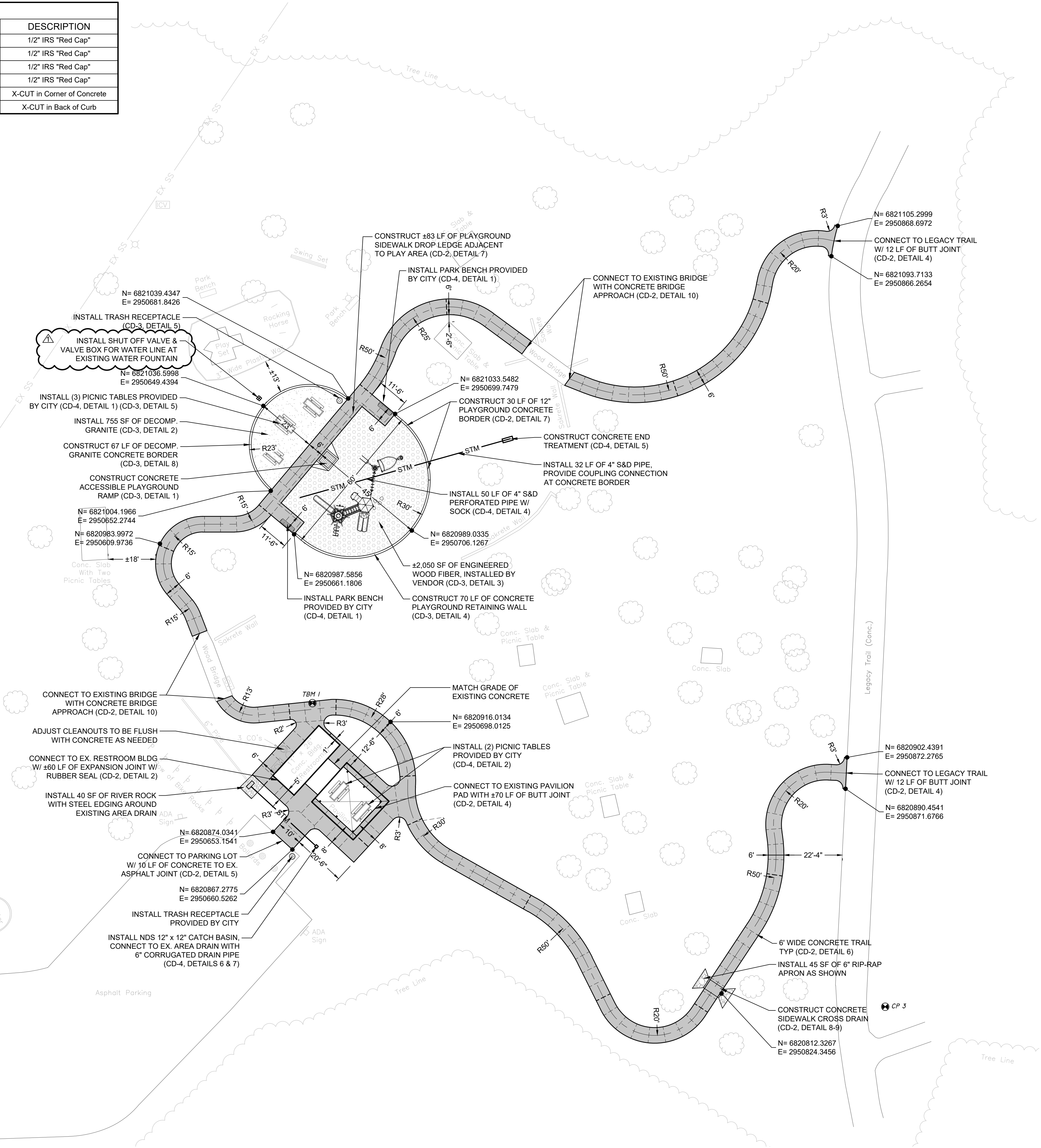


Know what's below.
Call before you dig

CONTROL POINT TABLE				
POINT	NORTHING	EASTING	ELEV.	DESCRIPTION
CP 1	6821222.561	2950496.654	581.19	1/2" IRS "Red Cap"
CP 2	6820762.971	2950515.572	566.51	1/2" IRS "Red Cap"
CP 3	6820807.263	2950886.807	569.67	1/2" IRS "Red Cap"
CP 4	6821005.504	2951006.849	582.54	1/2" IRS "Red Cap"
TBM 1	6820923.122	2950668.167	565.26	X-CUT in Corner of Concrete
TBM 2	6821038.080	2950499.573	569.64	X-CUT in Back of Curb



Know what's below.
Call before you dig.



LEGEND

PROPERTY LINE

STM

EXPANSION JOINT

SAW JOINT

4" CONCRETE SIDEWALK

PLAYGROUND

DECOMPOSED GRANITE

3-5" RIVER ROCK

6" ROCK RIP-RAP

NOTES:

1. ALL CONCRETE PAVEMENT TO BE 3,600 PSI WITH #4 REBAR @ 24" O.C. UNLESS NOTED OTHERWISE IN CONSTRUCTION DETAILS.

2. EXPANSION JOINTS TO BE NO MORE THAN 60' APART. SAW JOINTS NO MORE THAN 15' APART UNLESS SPECIFIED IN CONSTRUCTION DETAILS.

MHS

PLANNING & DESIGN

12222 Merit Dr, Dallas, TX 75251

214.845.7008

212 W. 9th St, Tyler, TX 75701

903.597.6606

TBPE #14571

REGISTERED LANDSCAPE ARCHITECT

DAVID B. SHIPP

2121

STATE OF TEXAS

THE SEAL APPEARING ON THIS DOCUMENT WAS AUTHORIZED BY DAVID B. SHIPP, PLA #2121 ON APRIL 26, 2024.

W.E. WINTERS PARK

17560 FM 2493

TYLER, TEXAS 75790

Drawn: TMG

Checked: DBS

Revision History

4.25.24 - ADD SHUT OFF VALVE / PAVING NOTES

Job Number: 22-062

Date: 4/26/2024

N

0

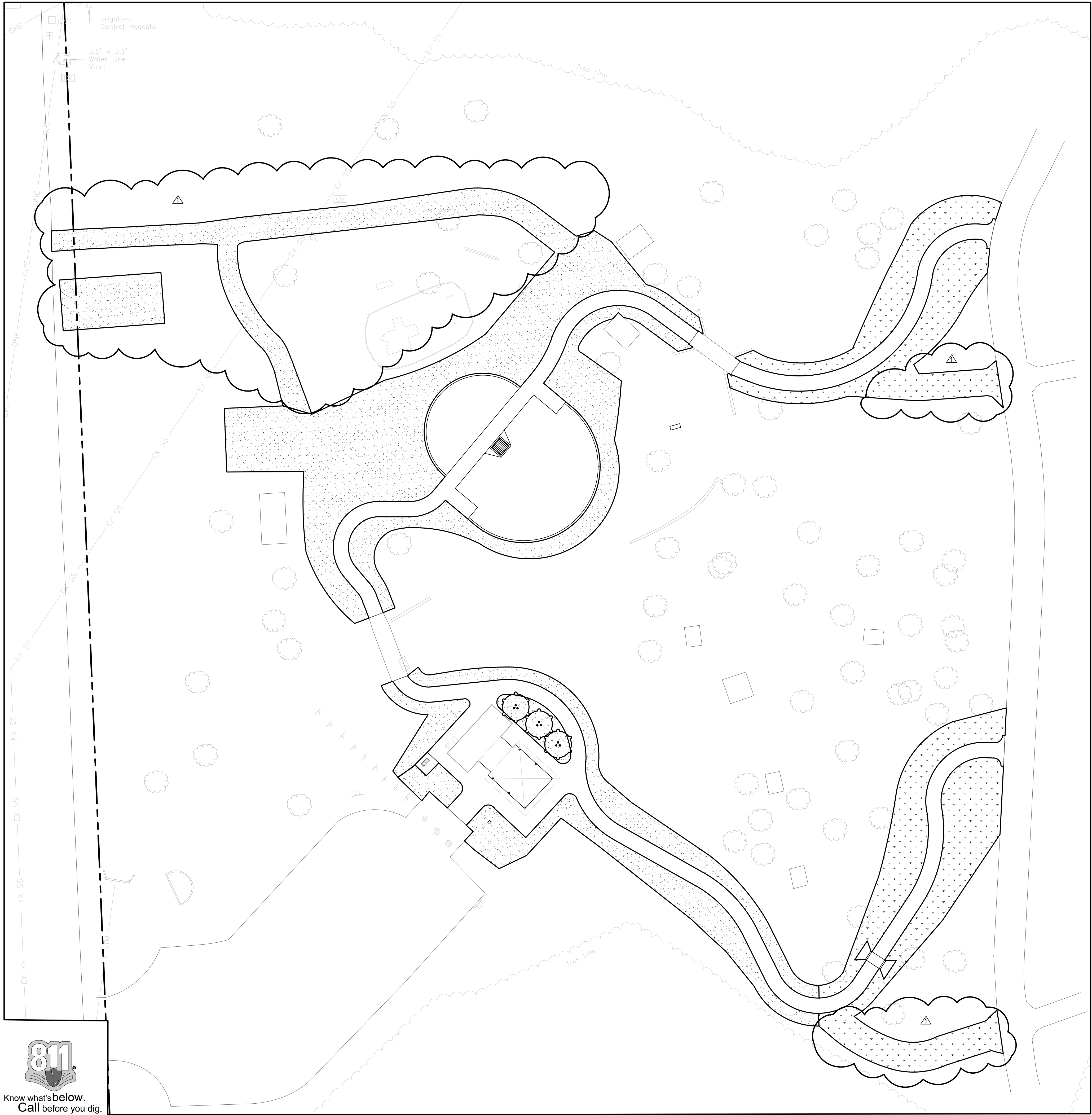
20

40

Feet

1" = 20'

L:\City of Tyler\23-049 W.E. Winters Park (City of Tyler)\CAD\03 - Production\2024.04.24 - LANDSCAPE PLAN.dwg



LEGEND

--- PROPERTY LINE

EXISTING TREE

PLANT SCHEDULE

SYMBOL	BOTANICAL / COMMON NAME	CONT	QTY
--------	-------------------------	------	-----

ORNAMENTAL TREES

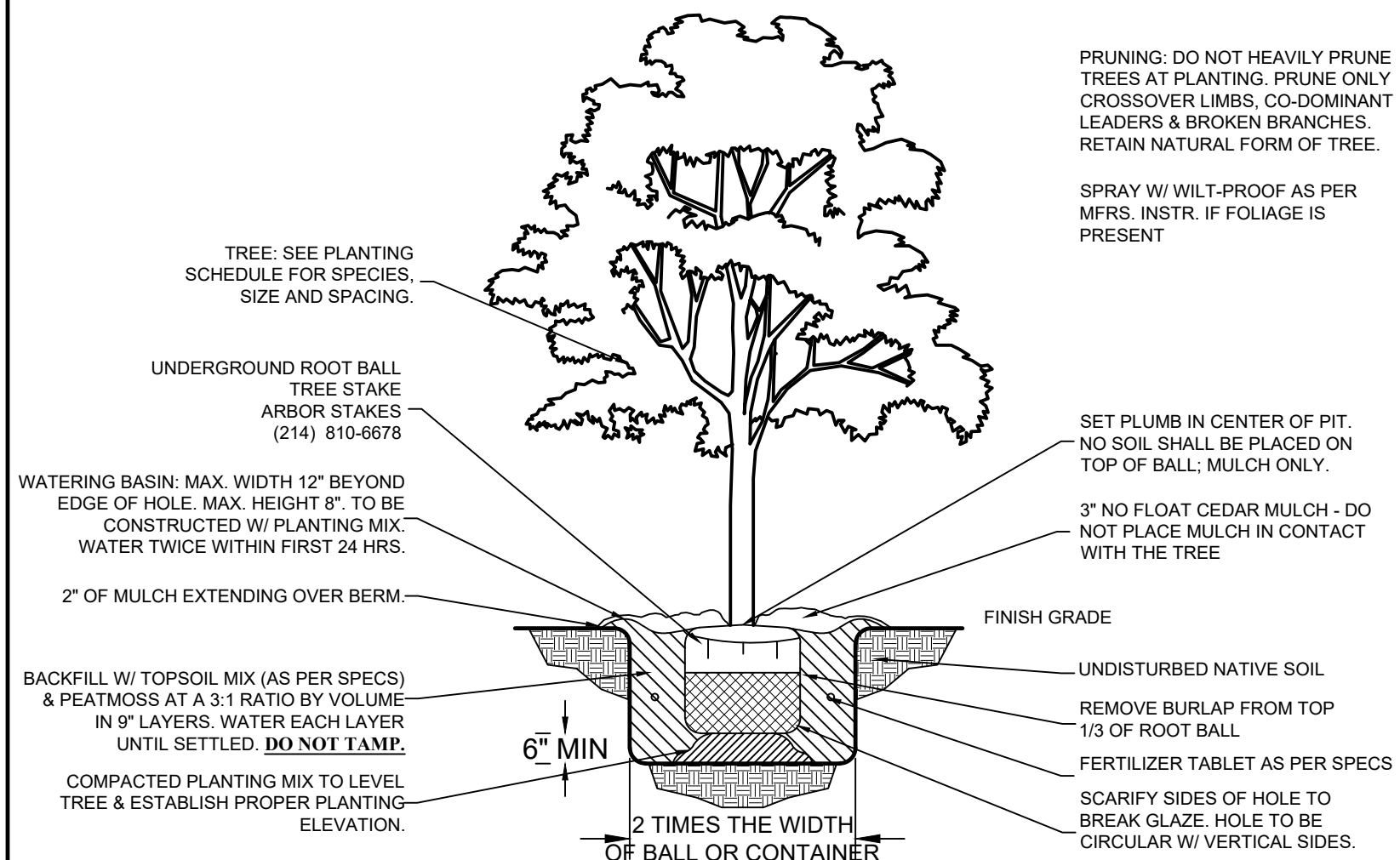
	Cercis canadensis / Eastern Redbud	15 gal.	3
--	------------------------------------	---------	---

SYMBOL	BOTANICAL / COMMON NAME	CONT	SPACING	QTY
--------	-------------------------	------	---------	-----

TURFGRASS

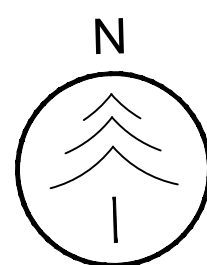
	Cynodon dactylon / Bermudagrass	Hydromulch		14,738 sf
	Zoysia japonica / Zoysia Grass	Sod		6,764 sf

NOTE: ALL HYDRO-MULCH AND SOD AREAS TO BE BACKFILLED WITH TOP SOIL TO GRADE, FINE GRADED AND RAKED PRIOR TO GRASS INSTALLATION



TREE PLANTING DETAIL

N.T.S.



0 20 40 Feet
1" = 20'



THE SEAL APPEARING ON THIS DOCUMENT WAS AUTHORIZED BY MICA E. PEREZ, PLA #2887 ON APRIL 25, 2024.

W.E. WINTERS PARK
17560 FM 2493
TYLER, TEXAS 75790

Drawn: MEP
Checked: DBS

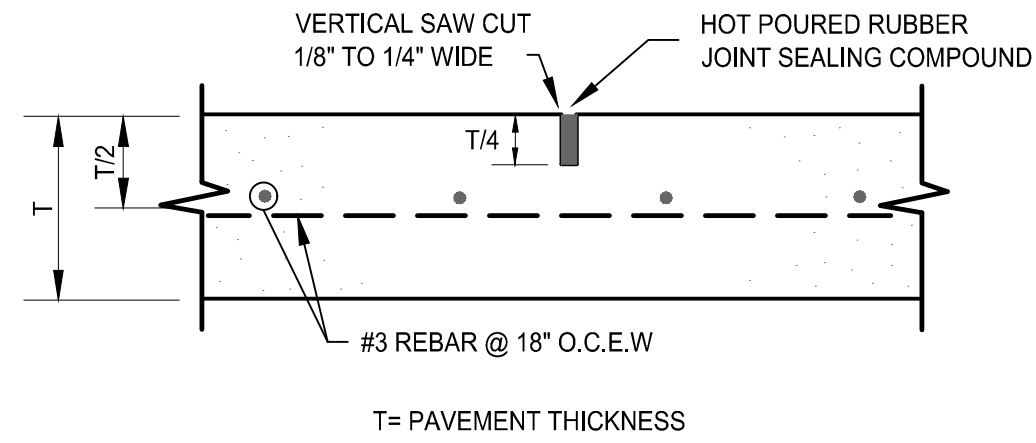
Revision History
4.24.24 REVISED SOD & HYDROMULCH LIMITS

Job Number: 22-062
Date: 4/25/2024

LANDSCAPE PLAN

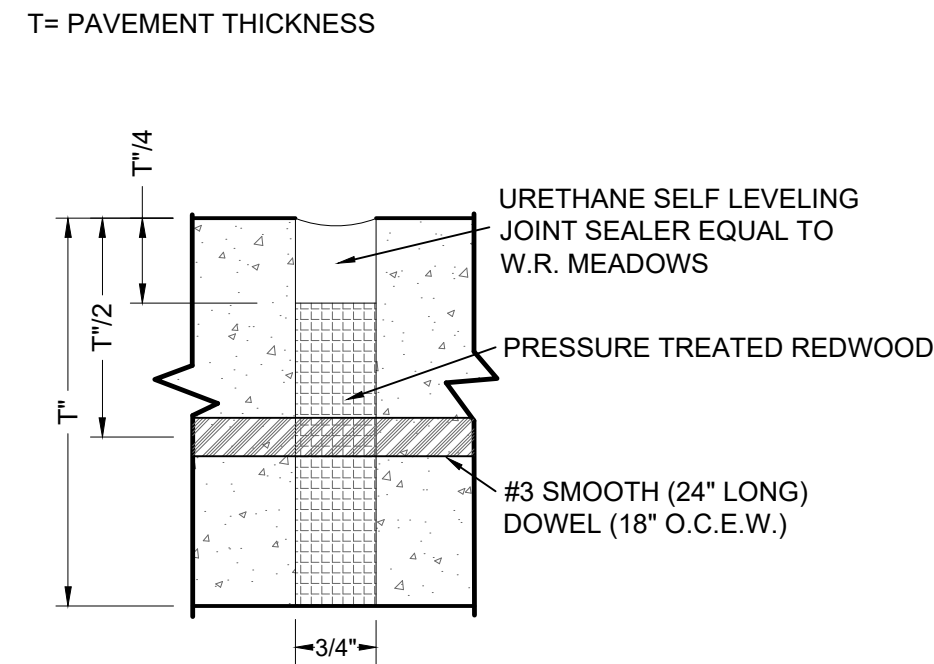
L-1

L:\City of Tyler\23-049 W.E. Winters Park (City of Tyler)\CAD03 - Production\CONSTRUCTION DETAILS.dwg



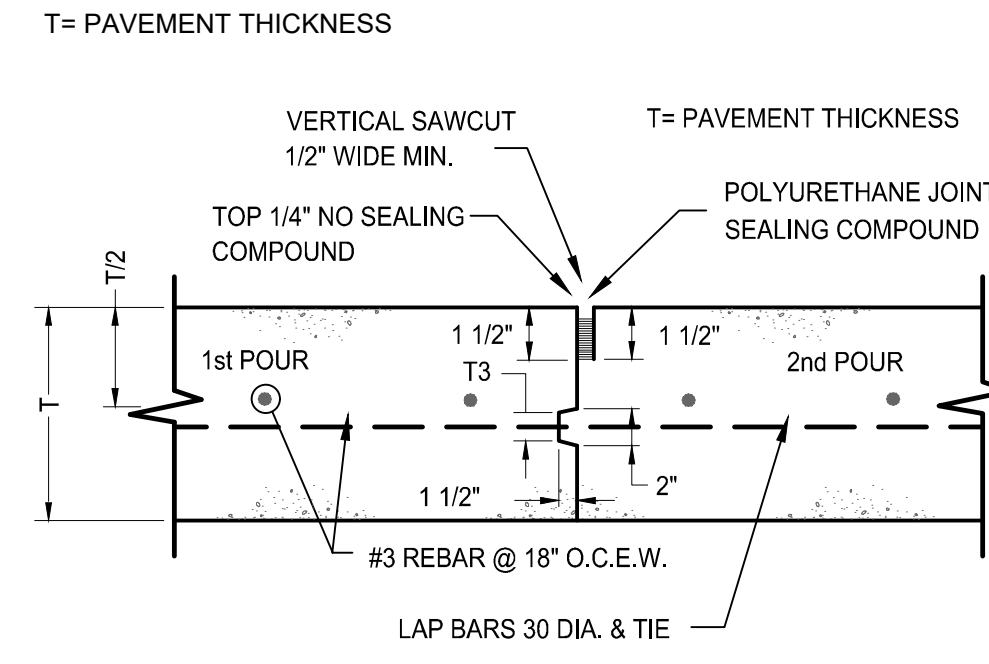
- NOTES:
1. SAWCUT JOINTS WITHIN 12 HOURS AFTER PLACEMENT
 2. MAXIMUM 15' SPACING
 3. SPACING ON TRAILS TO MATCH WIDTH

① **SAWED DUMMY (CONTROL) JOINT**
N.T.S.



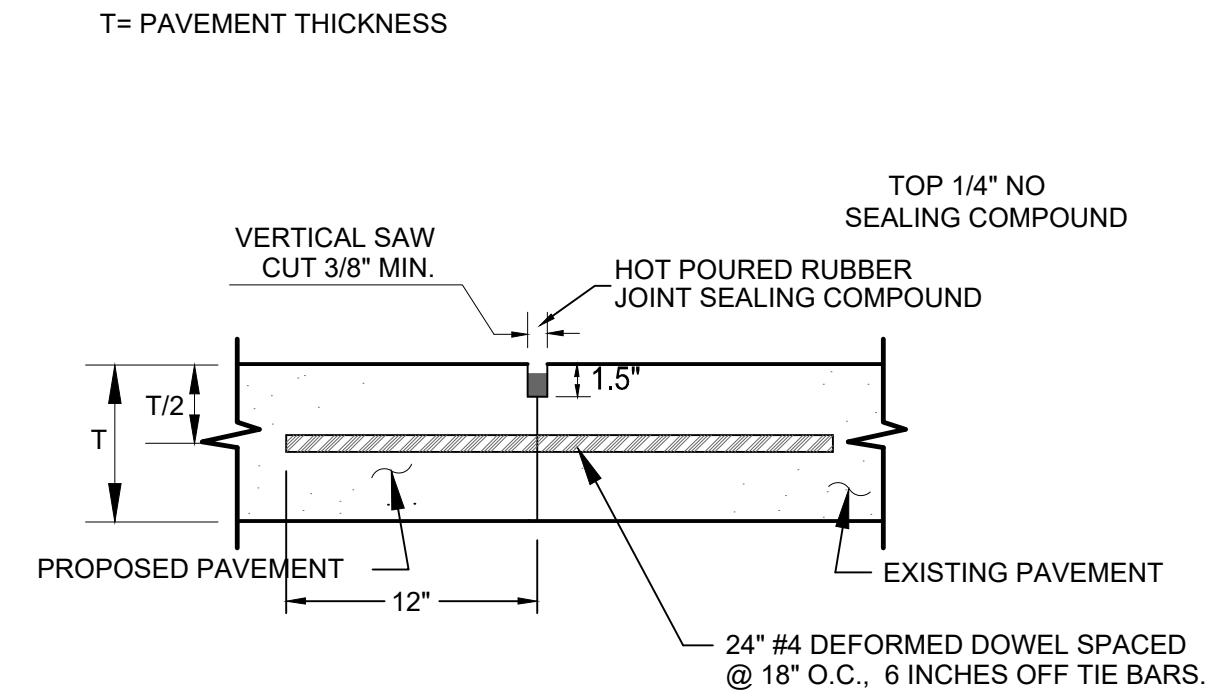
NOTE:
60' MAX. SPACING - PAVEMENT

② **EXPANSION JOINT DETAIL**
N.T.S.



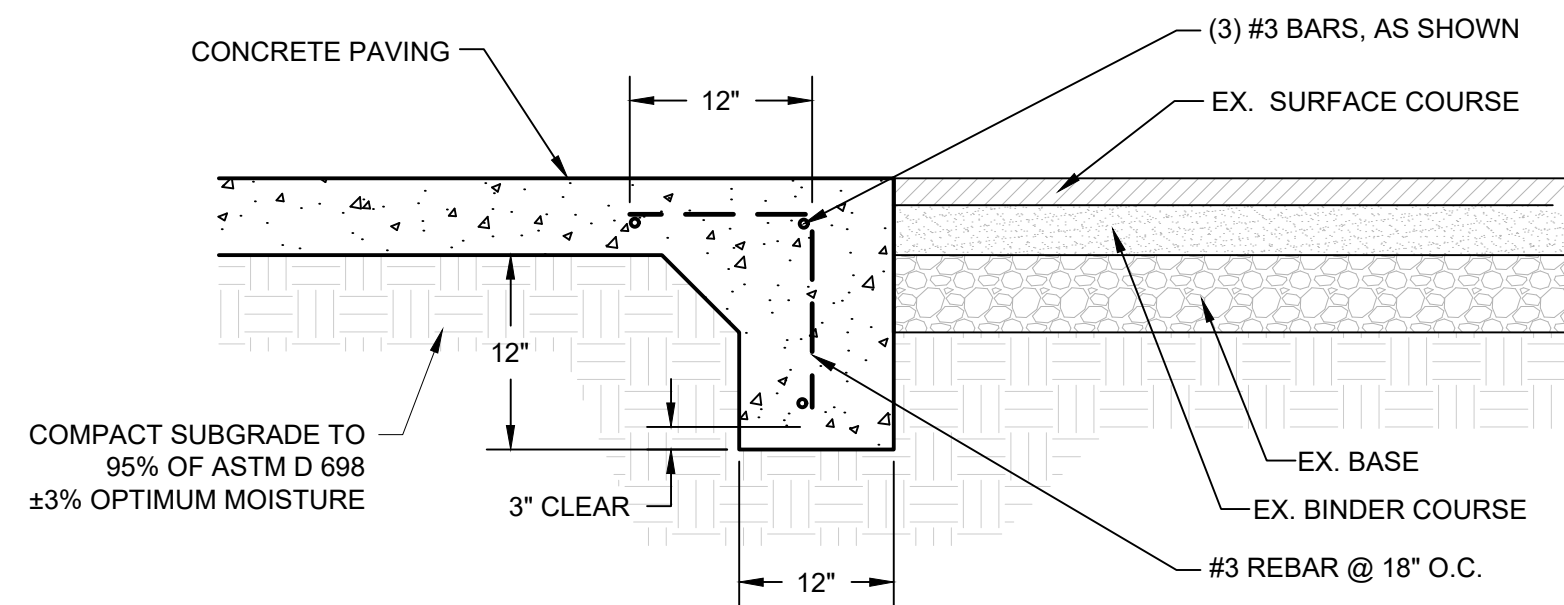
NOTE:
60' SPACING - 60' PARKING (MAX)

③ **CONSTRUCTION JOINT**
N.T.S.

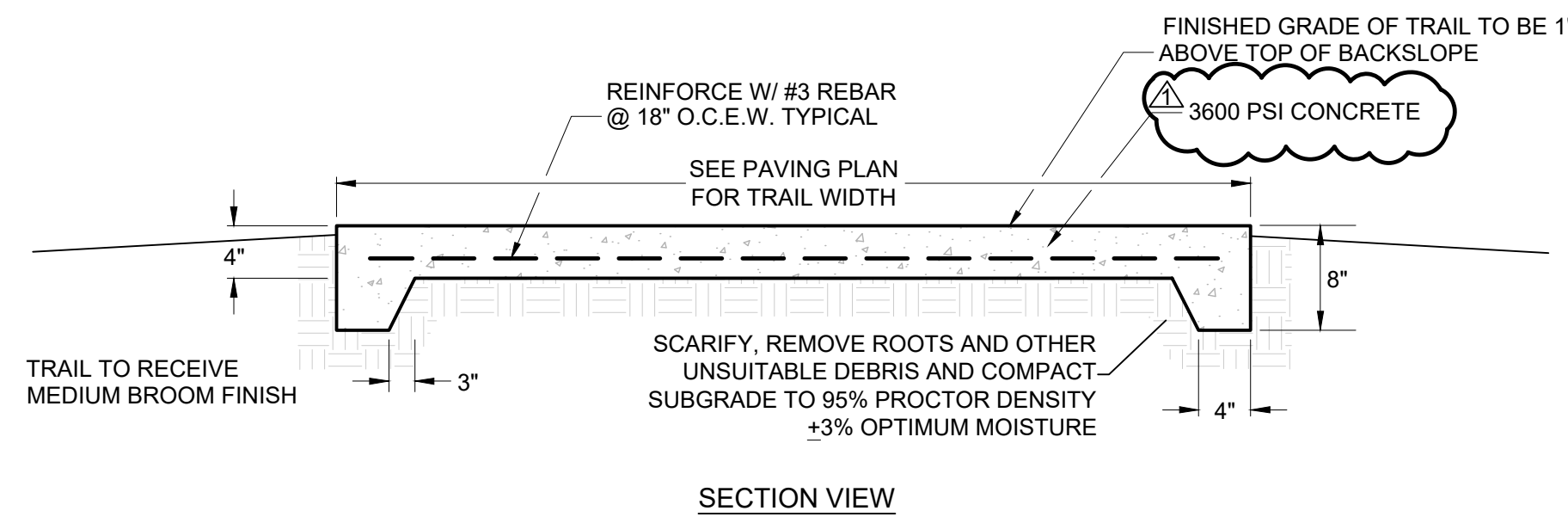


NOTE:
DOWELS AND REINFORCING BARS SHALL
BE SUPPORTED BY APPROVED DEVICE

④ **LONGITUDINAL BUTT JOINT**
N.T.S.

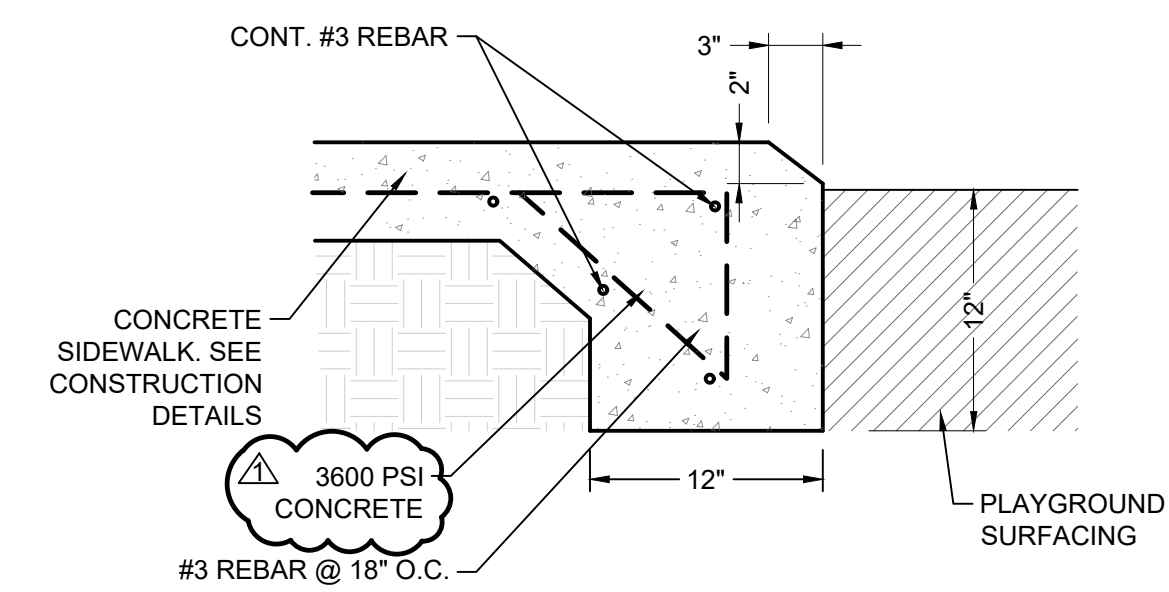


⑤ **CONCRETE JOINT W/EXISTING ASPHALT**
N.T.S.

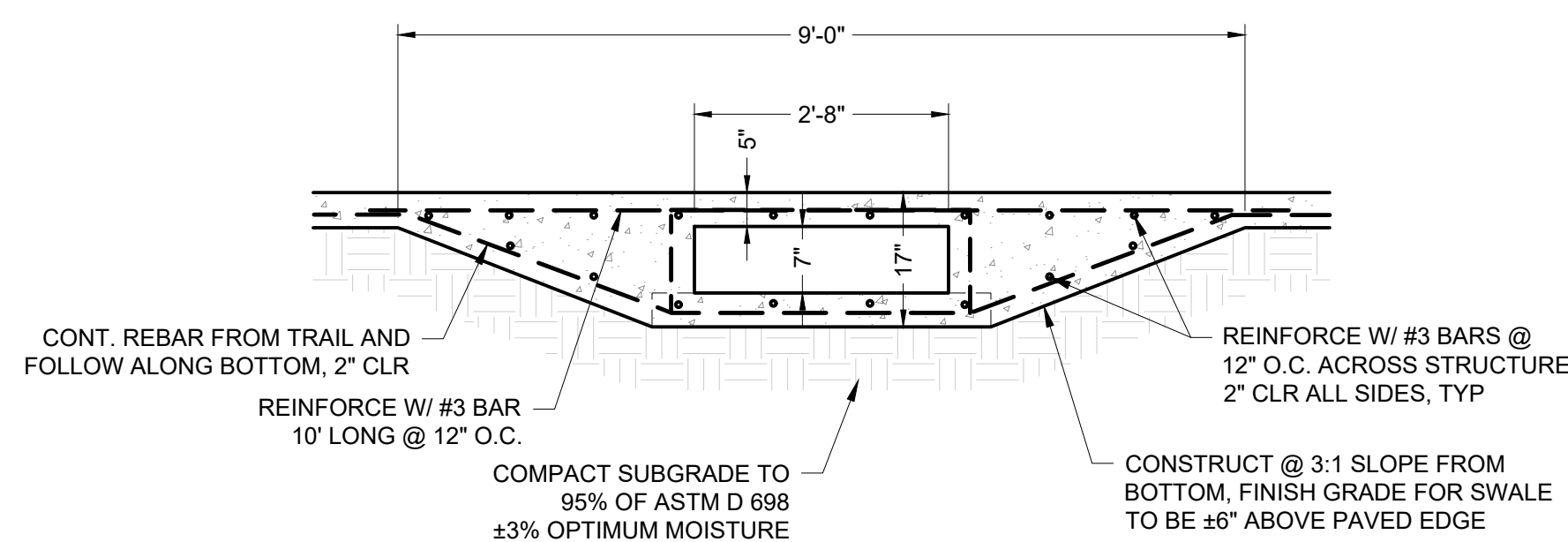


- NOTES:
1. CROSS SLOPE OF TRAIL TO BE $\pm 1\%$ WITH TERRAIN BUT NOT TO EXCEED 2%.
 2. RUNNING SLOPE OF TRAIL TO BE LESS THAN 5% IN ALL AREAS.
 3. ALTER TRAIL SECTION ELEVATION TO ALLOW CROSS DRAINAGE AS INSTRUCTED BY THE CONSULTANT.

⑥ **TYPICAL CONCRETE TRAIL DETAIL**
N.T.S.

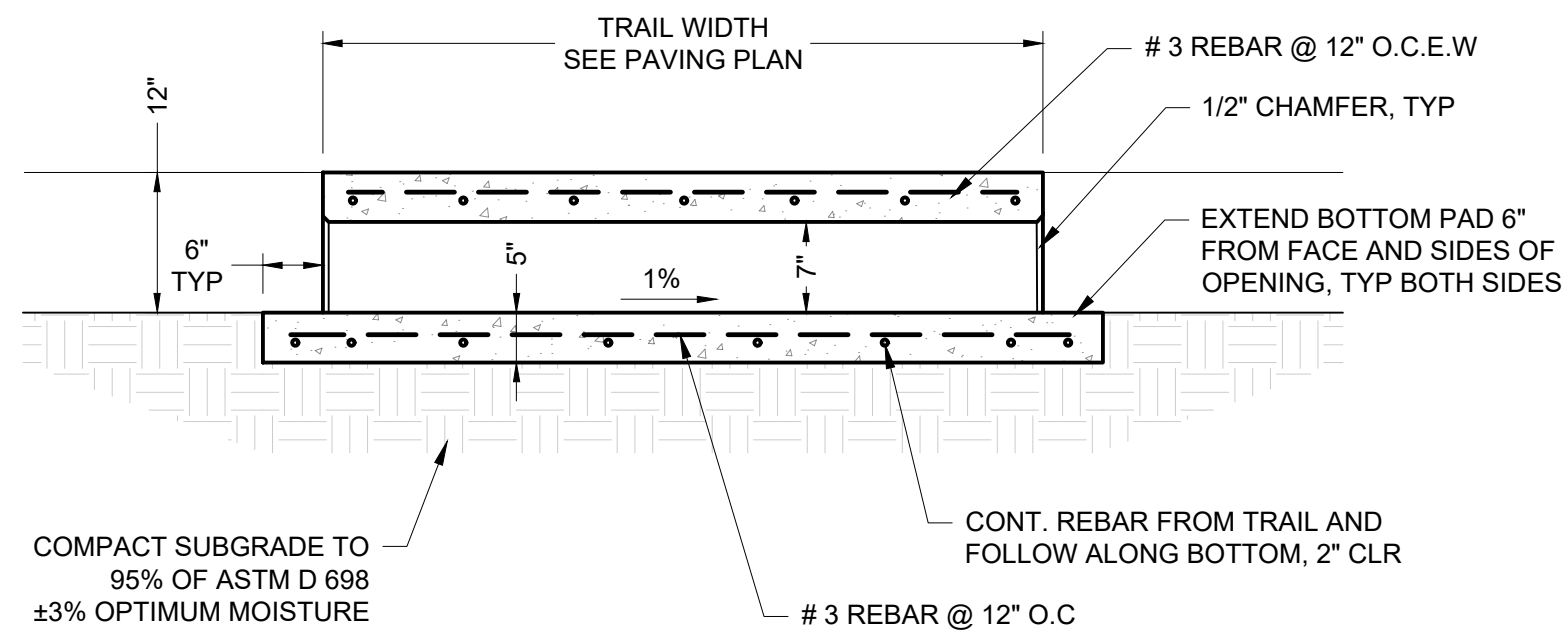


⑦ **PLAYGROUND SIDEWALK DROP LEDGE**
N.T.S.



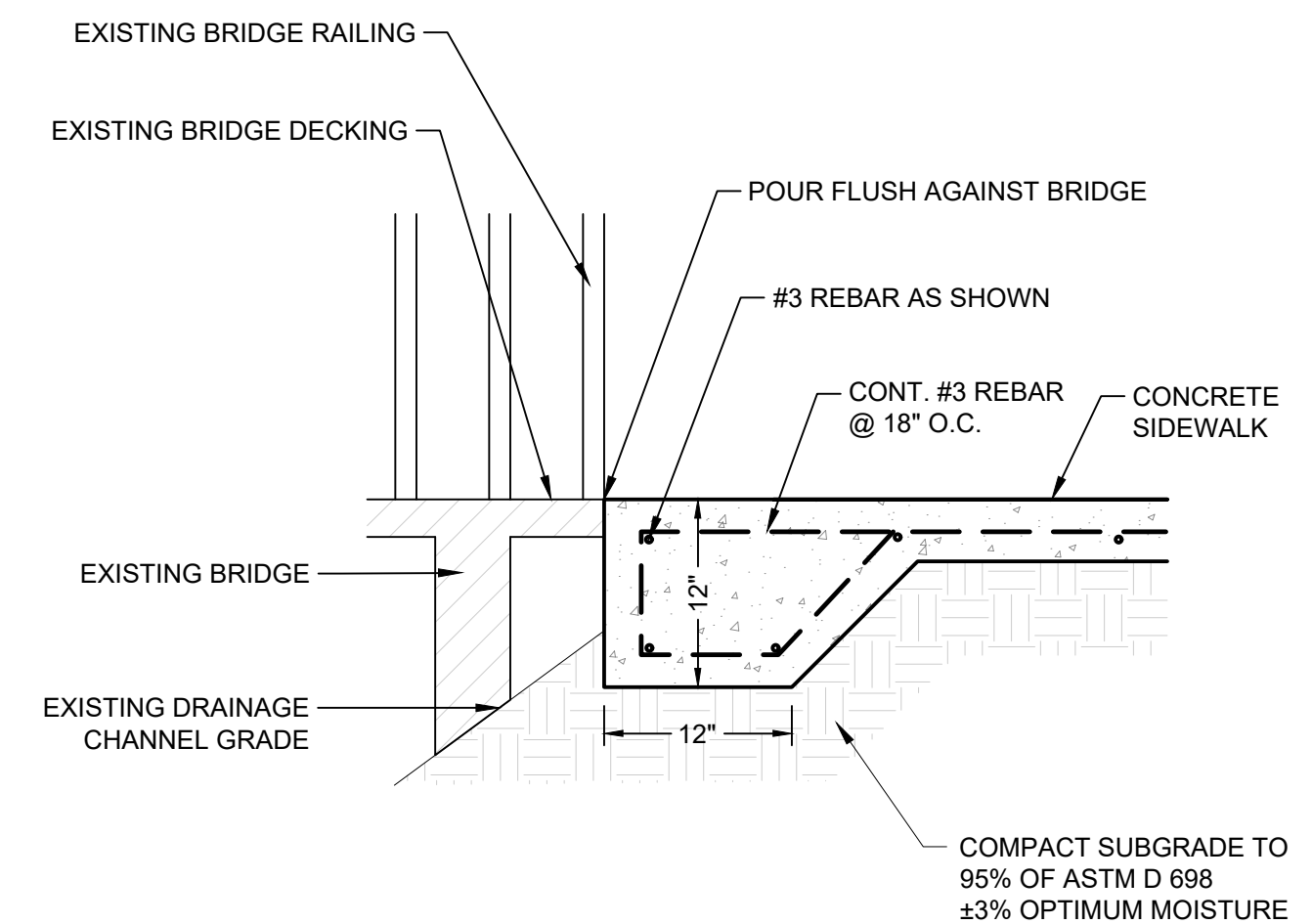
NOTE:
1. ALL CONCRETE TO BE 3,600 PSI

⑧ **SIDEWALK CROSS DRAIN DETAIL**
N.T.S.



NOTE:
1. ALL CONCRETE TO BE 3,600 PSI

⑨ **SIDEWALK CROSS DRAIN SECTION**
N.T.S.



⑩ **CONCRETE BRIDGE APPROACH DETAIL**
N.T.S.

Drawn: TMG
Checked: DBS

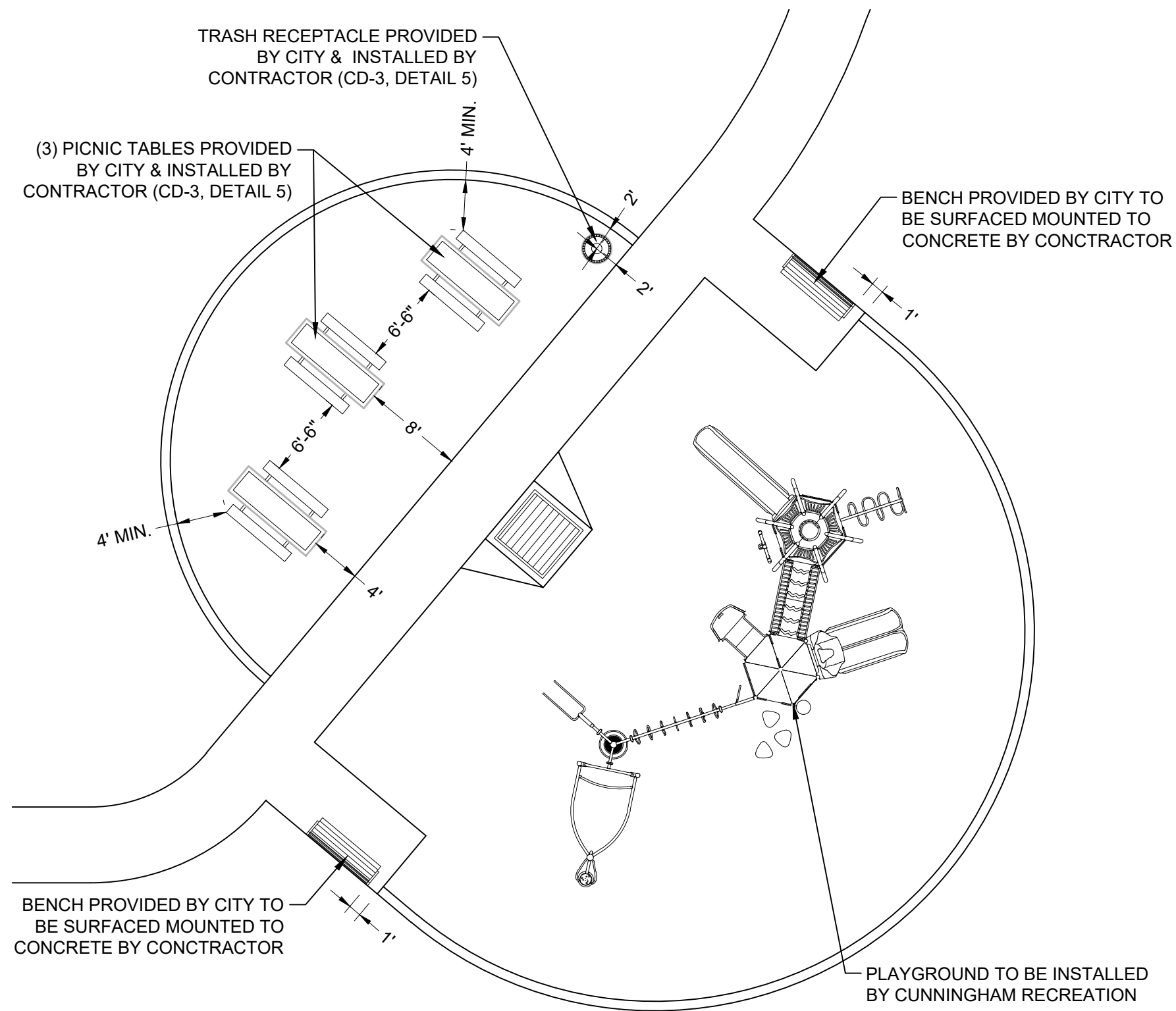
Revision History	
4.25.24 UPDATED	CONCRETE PSI

Job Number: 22-062
Date: 4/25/2024

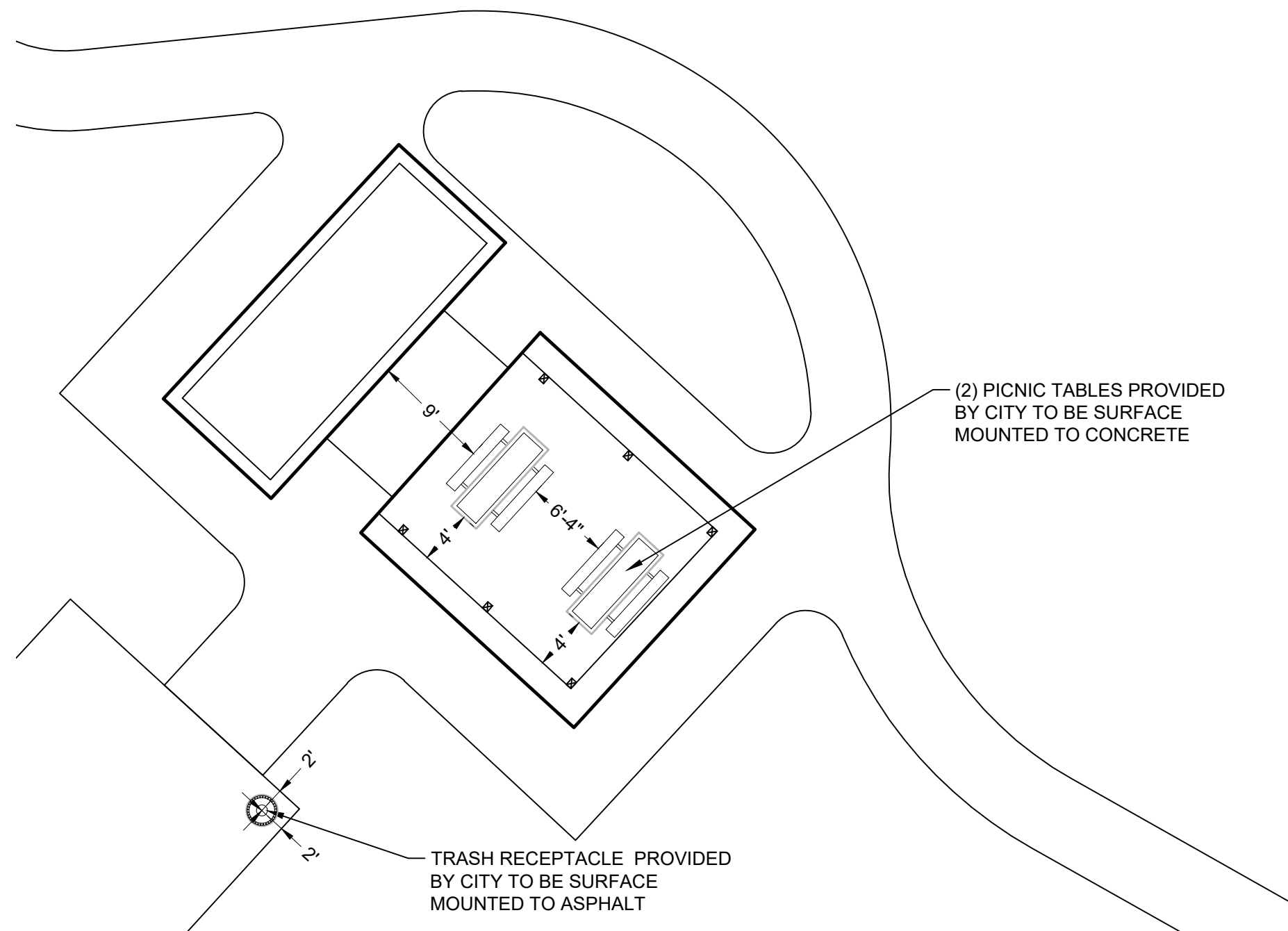
CONSTRUCTION
DETAILS II



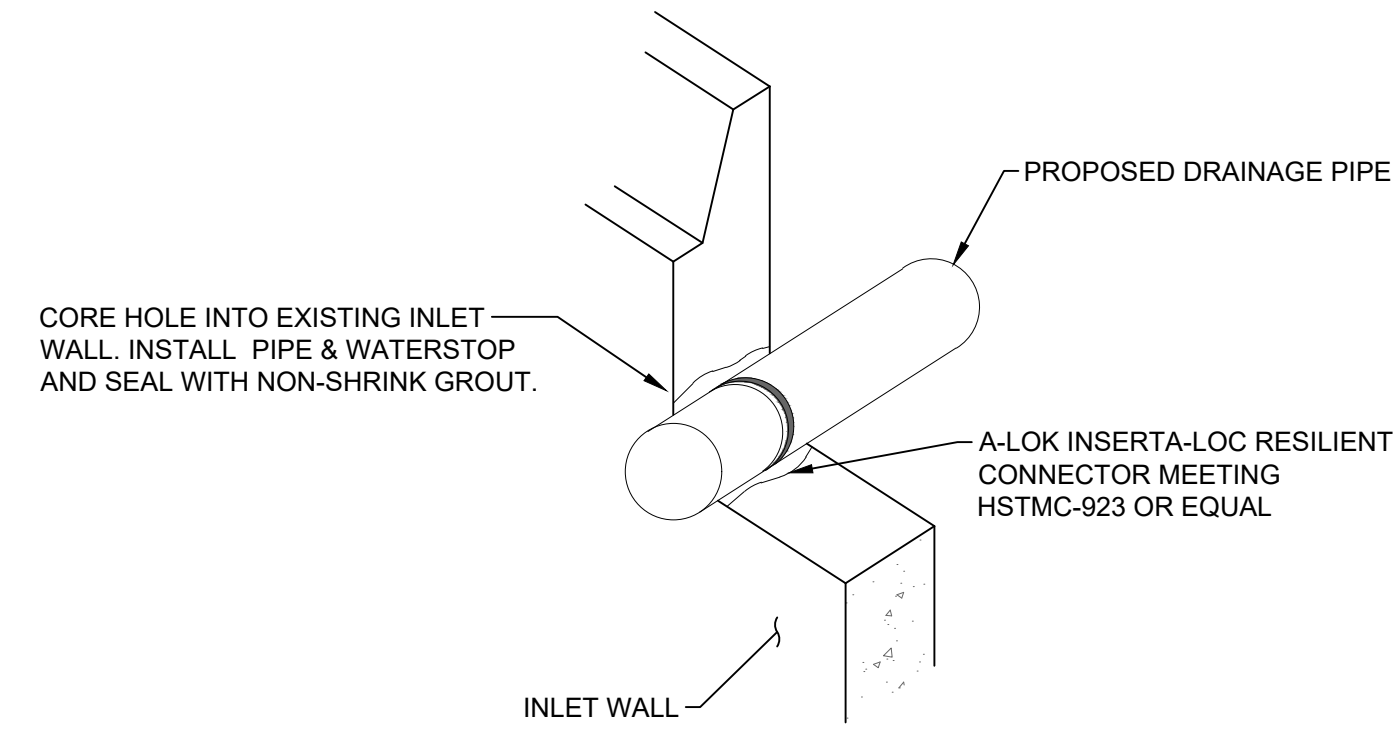
L:\City of Tyler\23-049 W.E. Winters Park (City of Tyler)\CAD\03 - Production\CONSTRUCTION DETAILS.dwg



1 **PLAYGROUND SITE FURNITURE LAYOUT**
N.T.S.

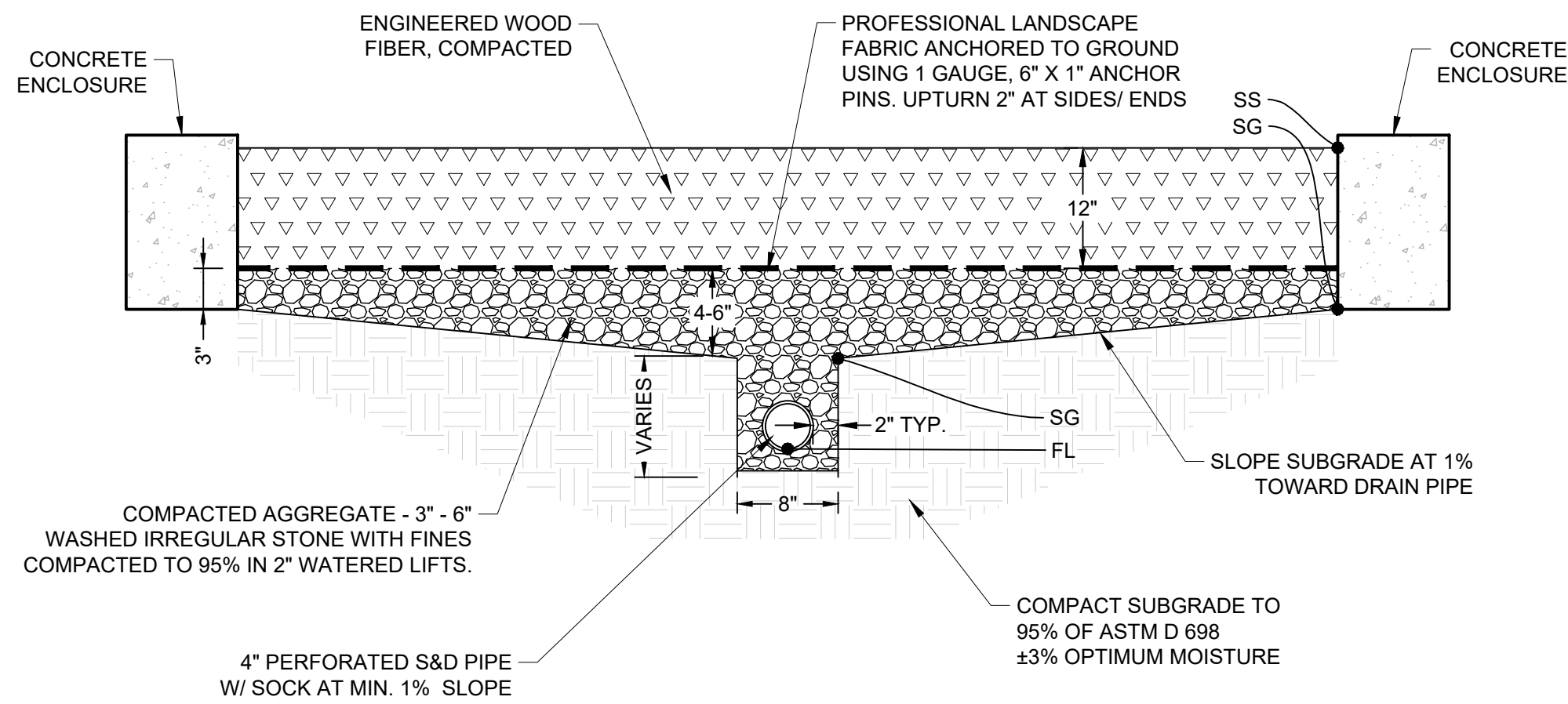


2 **PAVILION SITE FURNITURE LAYOUT**
N.T.S.



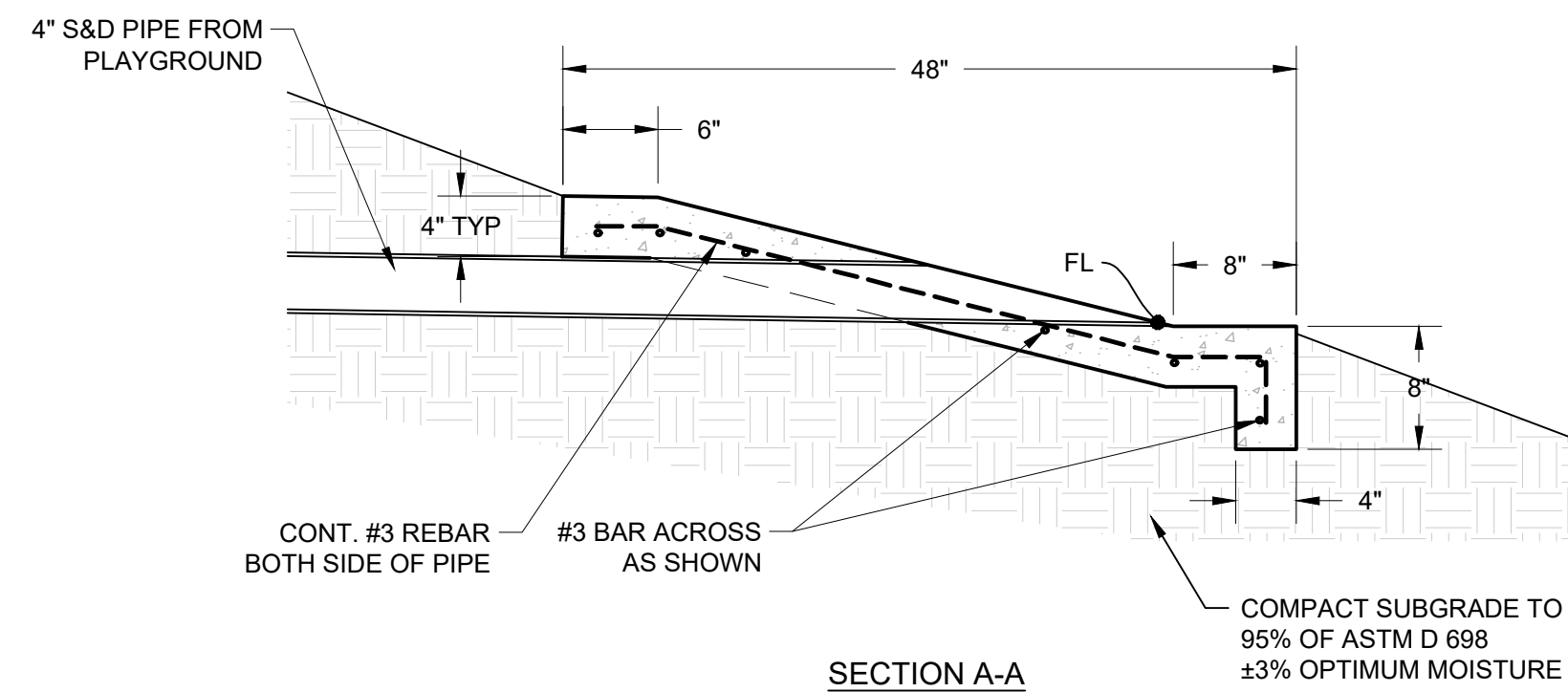
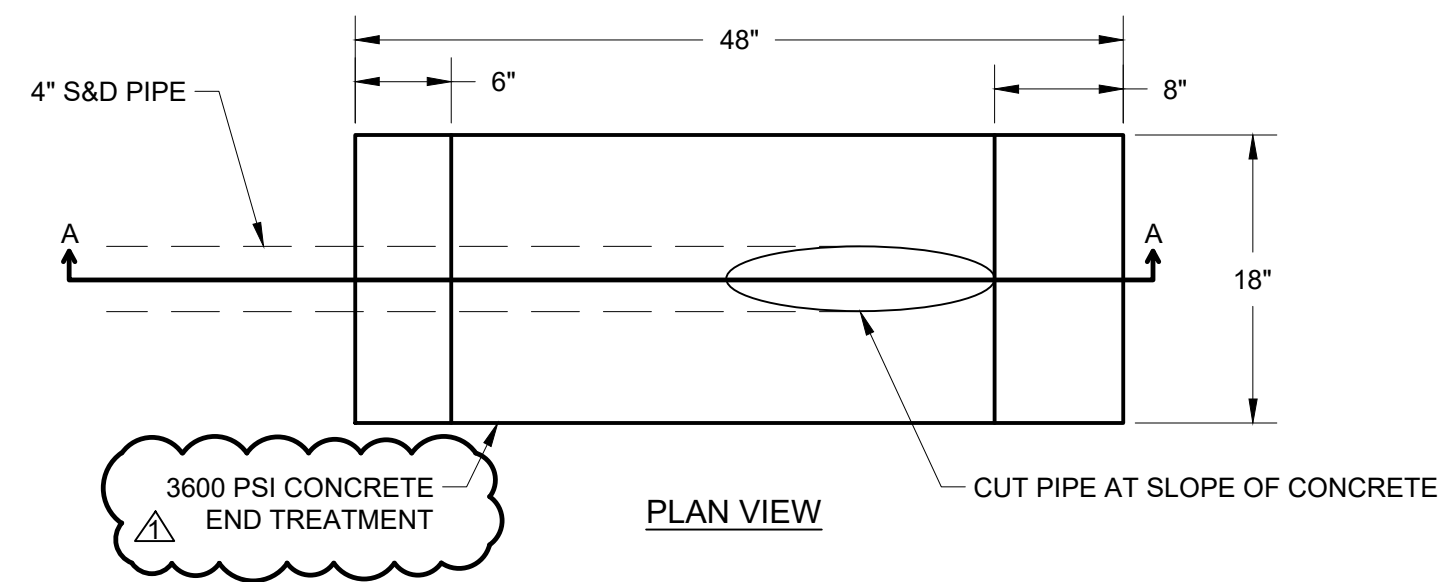
NOTE:
IF PIPE ENTRANCE IS THROUGH GROUT MATERIAL, REMOVE AND REPLACE ALL GROUT MATERIAL TO OBTAIN A GOOD BOND. USE NON-STREAK GROUT.

3 **TIE-IN TO EXISTING INLET DETAIL**
N.T.S.

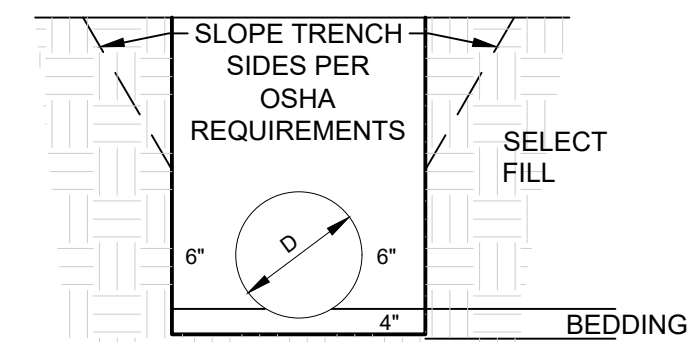


NOTE:
SEE GRADING PLAN FOR PROPOSED SS, SG, & FL ELEVATIONS

4 **PLAYGROUND DRAINAGE DETAIL**
N.T.S.



5 **CONCRETE END TREATMENT DETAIL**
N.T.S.



1. BEDDING SHALL BE COMPACTED CRUSHED STONE AND SHALL BE SHAPED TO THE BOTTOM OF THE PIPE.
2. SELECT FILL SHALL BE SELECT MATERIAL. FREE OF LARGE ROCKS 3"+ AND SHALL BE PLACED IN 8" MAX. LOOSE LIFTS AND COMPACTED TO 95% STANDARD PROCTOR.

GENERAL NOTES:

1. ALL SIDE DITCHES TO BE CLEANED AND/OR REGRADED TO PROVIDE PROPER DRAINAGE.
2. ALL SLOPES NOT OTHERWISE NOTED SHALL BE 3:1 OR FLATTER.
3. ALL AREAS NOT OTHERWISE SURFACED TO BE SEEDED, MULCHED, WATERED AND MAINTAINED UNTIL AN ADEQUATE STAND OF GRASS IS OBTAINED.
4. UNLESS OTHERWISE SPECIFIED, ALL SLOPES TO BE COVERED WITH A MINIMUM OF 4" OF TOPSOIL.

6 **TRENCH AND BEDDING DETAIL**
N.T.S.